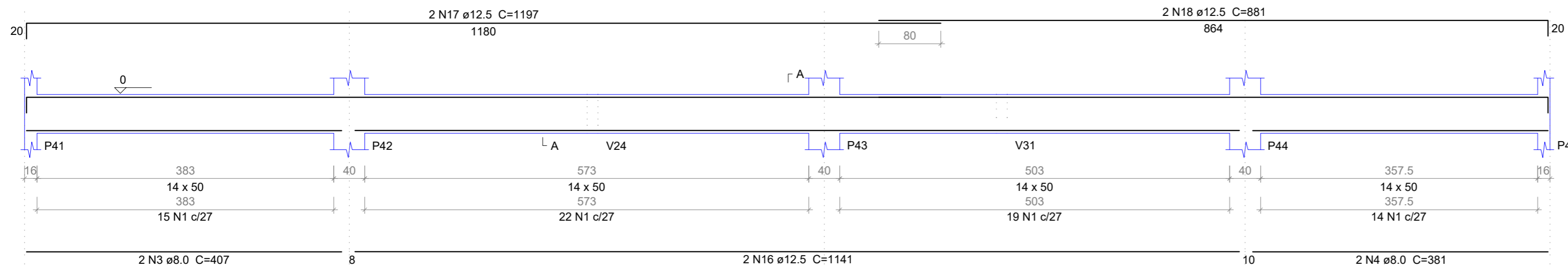
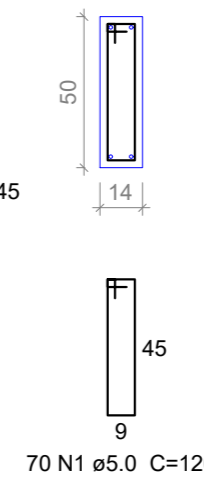


**V13**  
ESC 1:50



SEÇÃO A-A  
ESC 1:25



Relação do aço

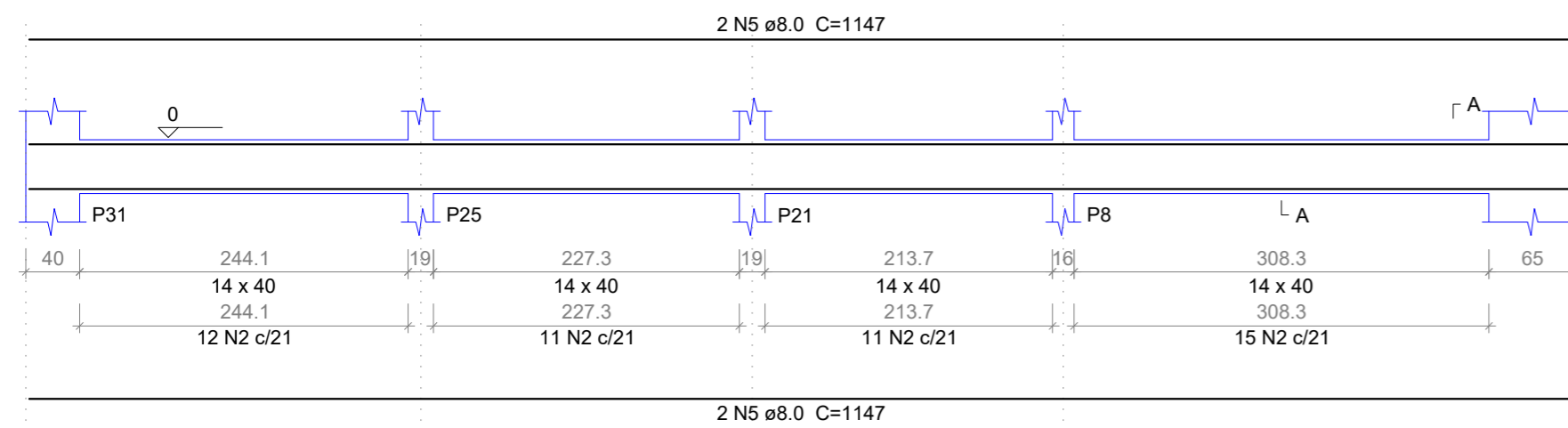
AÇO	N	DIAM	Q	UNIT (cm)	C.TOTAL (cm)
CA60	1	5.0	70	120	8400
V13	2	5.0	155	100	15500
V16	3	8.0	2	407	814
V19	4	8.0	2	381	762
	5	8.0	4	1147	4588
	6	8.0	6	384	2304
	7	8.0	4	432	1728
	8	8.0	2	96	192
	9	8.0	2	152	304
	10	8.0	2	431	862
	11	8.0	2	454	908
	12	8.0	2	420	840
	13	8.0	2	443	886
	14	8.0	4	380	1520
	15	10.0	2	384	768
	16	12.5	2	1141	2282
	17	12.5	2	1197	2394
	18	12.5	2	881	1762

Resumo do aço

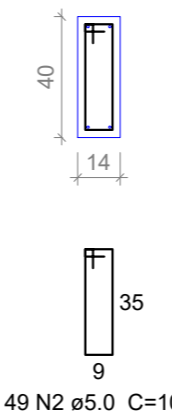
AÇO	DIAM	C.TOTAL (m)	PESO (kg)
CA50	8.0	157.1	62.00
	10.0	7.7	4.73
	12.5	64.4	62.00
CA60	5.0	239	36.82
PESO TOTAL			
CA50		128.73	
CA60		36.82	

Vol. de concreto total (C-25) = 3.46 m³  
Área de forma total = 57.36 m²

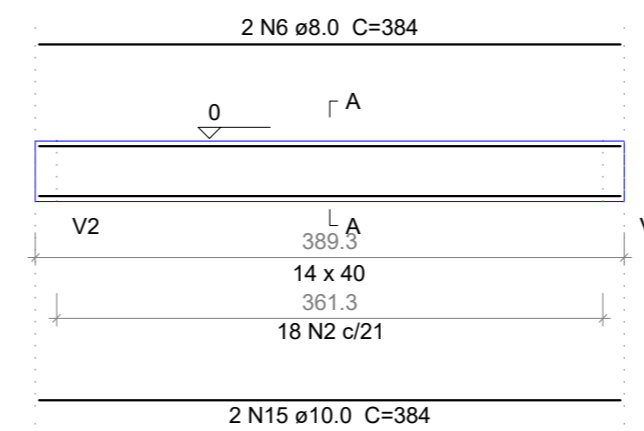
**V14**  
ESC 1:50



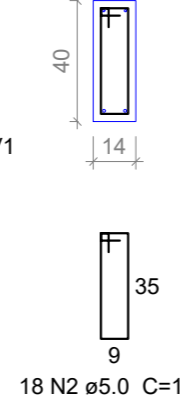
SEÇÃO A-A  
ESC 1:25



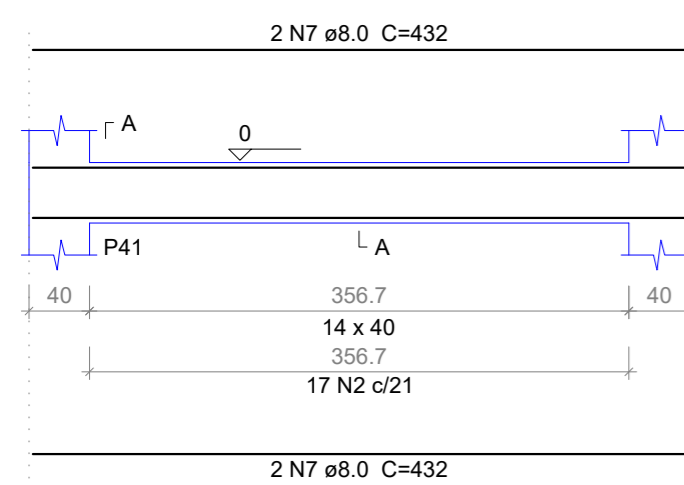
**V15**  
ESC 1:50



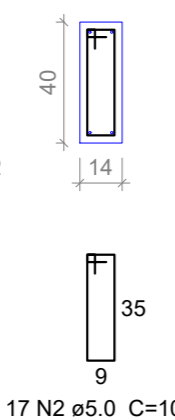
SEÇÃO A-A  
ESC 1:25



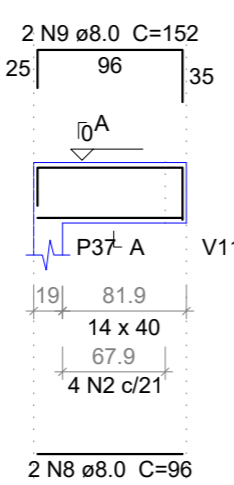
**V16**  
ESC 1:50



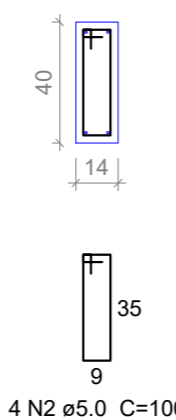
SEÇÃO A-A  
ESC 1:25



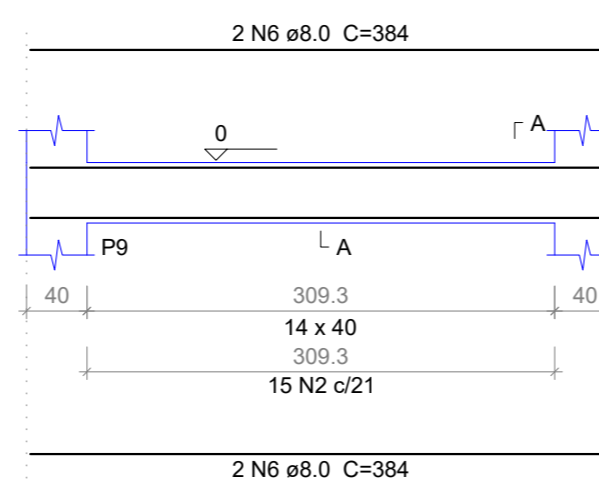
**V17**  
ESC 1:50



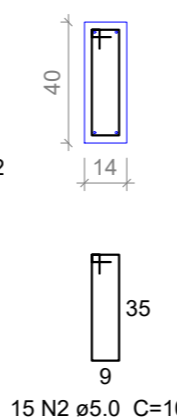
SEÇÃO A-A  
ESC 1:25



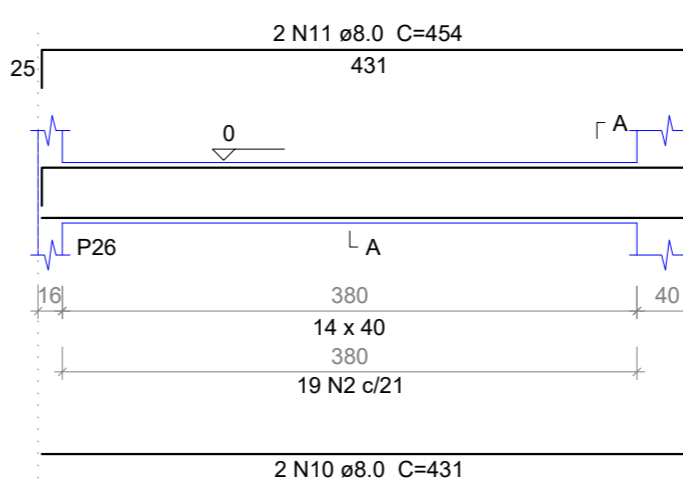
**V18**  
ESC 1:50



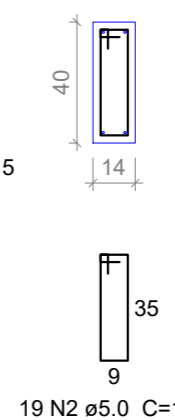
SEÇÃO A-A  
ESC 1:25



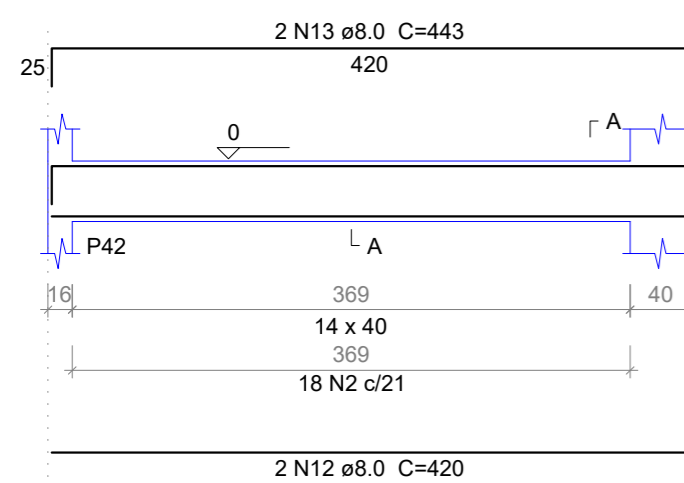
**V19**  
ESC 1:50



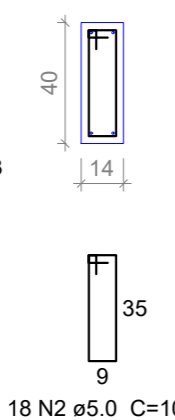
SEÇÃO A-A  
ESC 1:25



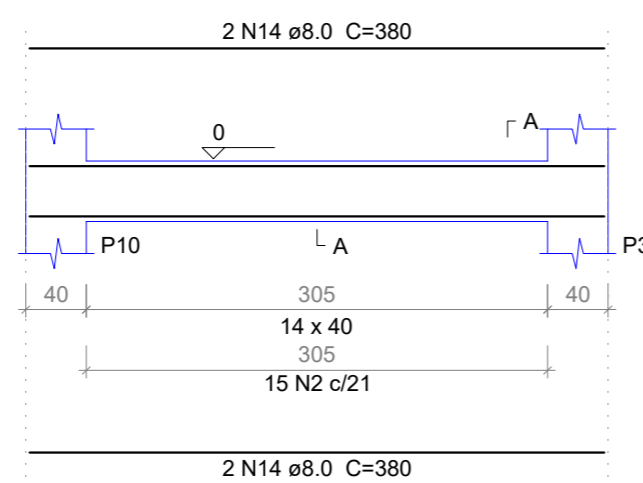
**V20**  
ESC 1:50



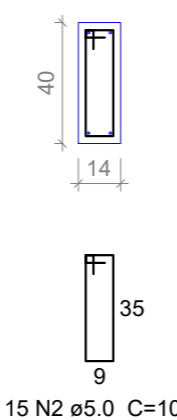
SEÇÃO A-A  
ESC 1:25



**V21**  
ESC 1:50



SEÇÃO A-A  
ESC 1:25



PREFEITURA MUNICIPAL DE PEDRA BRANCA

Projeto: CONSTRUÇÃO DE UMA UBS PORTE 1

Conteúdo: VIGAS BALDRAMES V13 ATÉ V21

Local: PEDRA BRANCA

Data: JUN/2024

Projetista: Ronis

Área Total: -

Área Construída: -

Esc: INDICADA

Responsável: Eng. Civil Heitor Vieira Lima Verde - CREA/CE - 55096

Secretaria de Desenvolvimento Urbano e Meio Ambiente  
Rua: José Joaquim de Souza, nº10 - Centro, Pedra Branca - Ce, 63630-000 - CNPJ: 07.726.540/0001-04

08/20