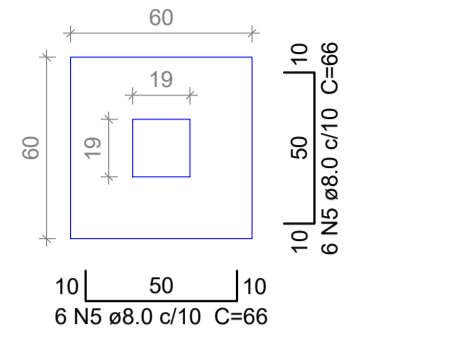
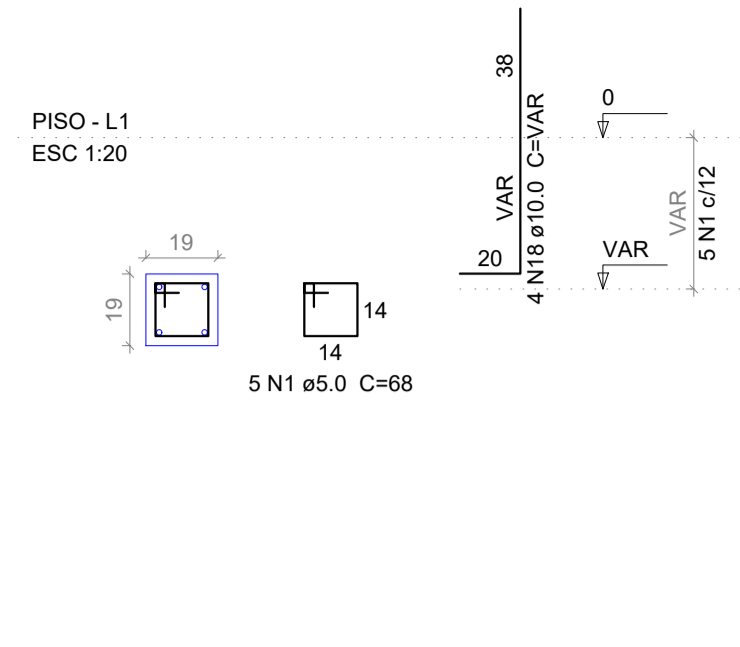


S1=S2=S3=S4=S5=S6=S7=S8=S9=S10  
 PLANTA ESC 1:25  
 CORTE ESC 1:25

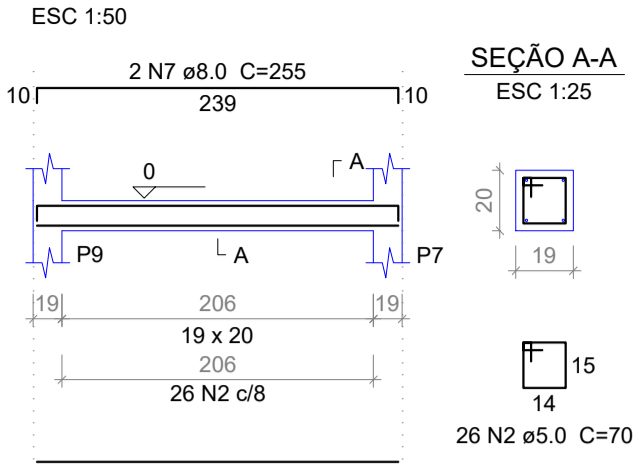


Solo com capacidade de suporte > 5.00 kgf/cm<sup>2</sup>  
 Solo compactado sobre a sapata  
 peso específico > 1600.00 kgf/m<sup>3</sup>

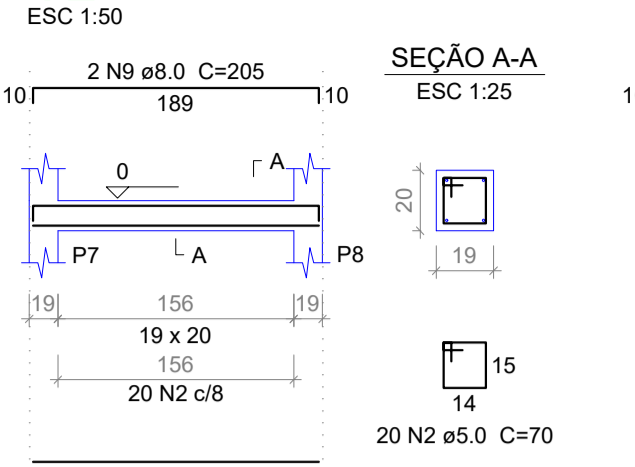
P1=P2=P3=P4=P5=P6=P7=P8=P9=P10



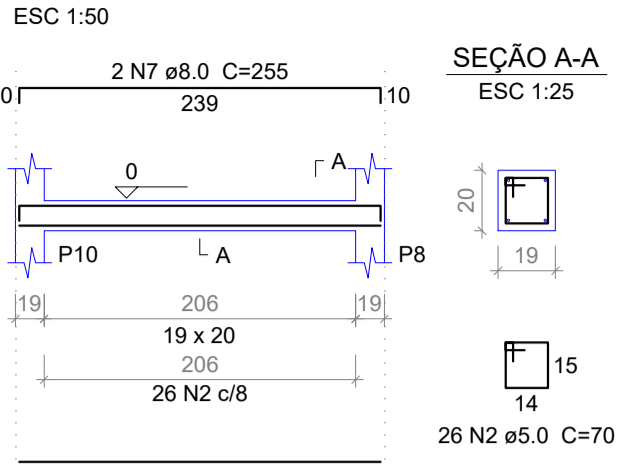
V1



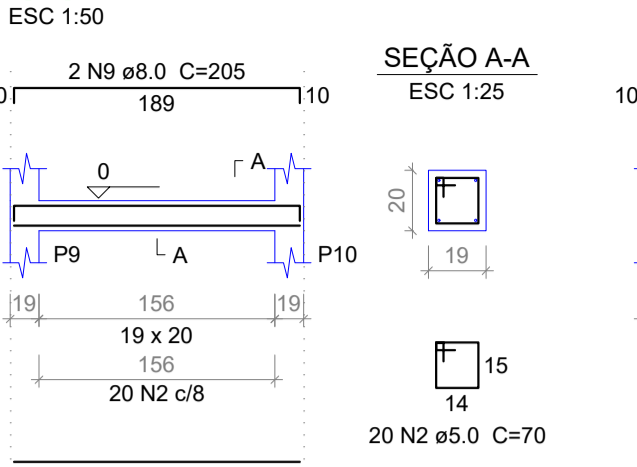
V2



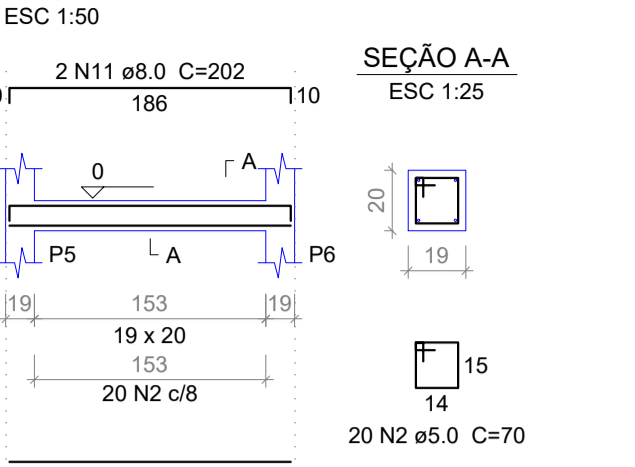
V3



V4



V5



Relação do aço

Piso:	10xP1	10xS1
	V1	V2
	V3	V4
	V5	V6
	V7	V8
	V9	V10
Topo:	10xP1	V1
	V2	V3
	V4	V5
	V6	V7
	V8	V9
	V10	V11

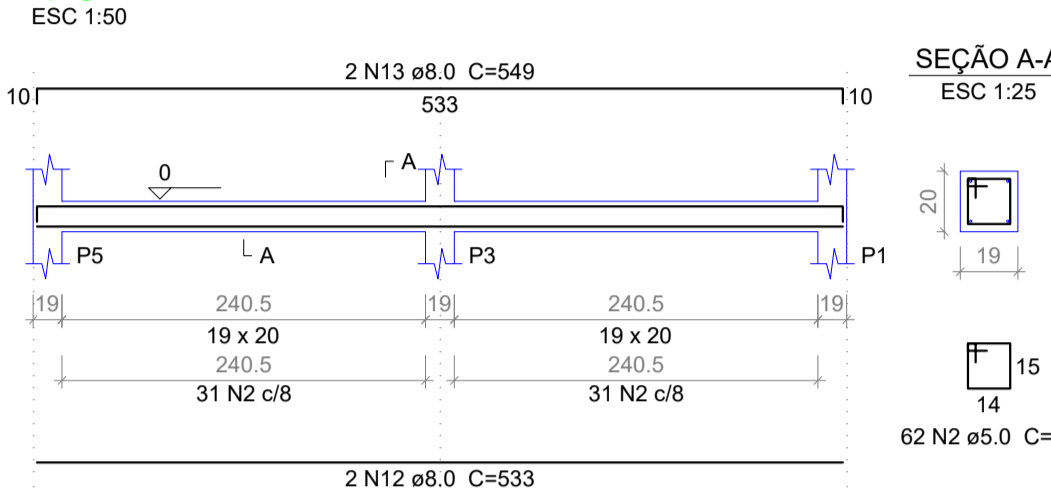
AÇO	N	DIAM	Q	UNIT (cm)	C.TOTAL (cm)
CA60	1	5.0	220	68	14960
	2	5.0	256	70	17920
	3	5.0	151	90	13590
	4	5.0	40	62	2480
CA50	5	8.0	120	66	7920
	6	8.0	8	239	1912
	7	8.0	4	255	1020
	8	8.0	12	189	2268
	9	8.0	4	205	820
	10	8.0	14	186	2604
	11	8.0	4	202	808
	12	8.0	8	533	4264
	13	8.0	4	549	2196
	14	8.0	6	234	1404
	15	8.0	4	237	948
	16	8.0	4	287	1148
	17	8.0	4	581	2324
	18	10.0	40	VAR	VAR
	19	10.0	40	197	7880

Resumo do aço

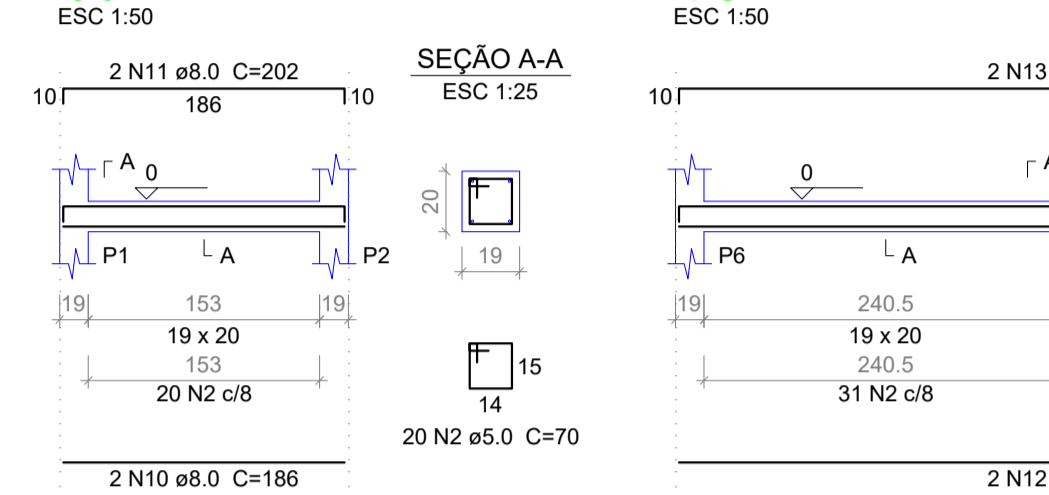
AÇO	DIAM	C.TOTAL (m)	PESO (kg)
CA50	8.0	296.4	116.1
CA60	10.0	121.2	74.7
	5.0	489.5	75.5
<b>PESO TOTAL</b>			
CA50	190.8		
CA60	75.5		

Vol. de concreto total (C-30) = 0.72 m<sup>3</sup>  
 Vol. de concreto total (C-25) = 3.34 m<sup>3</sup>  
 Área de forma total = 59.64 m<sup>2</sup>

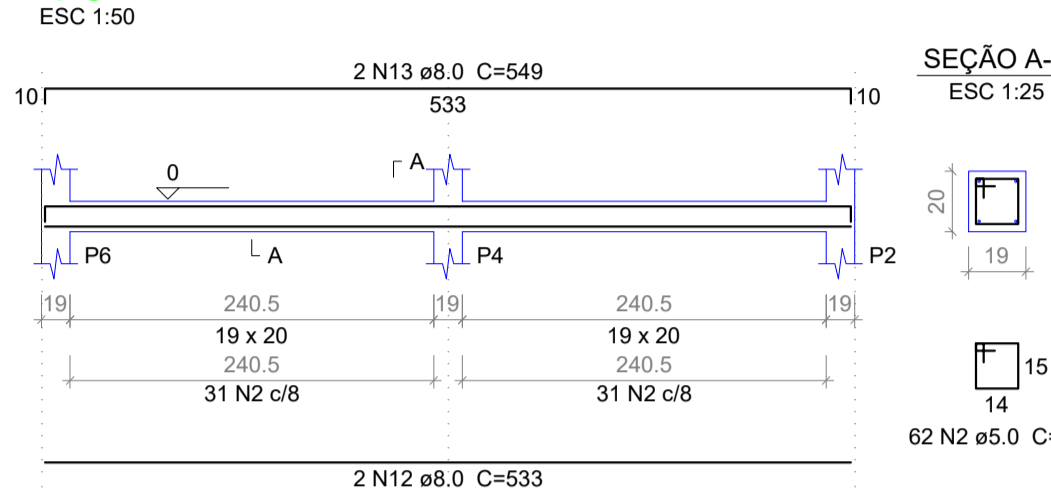
V6



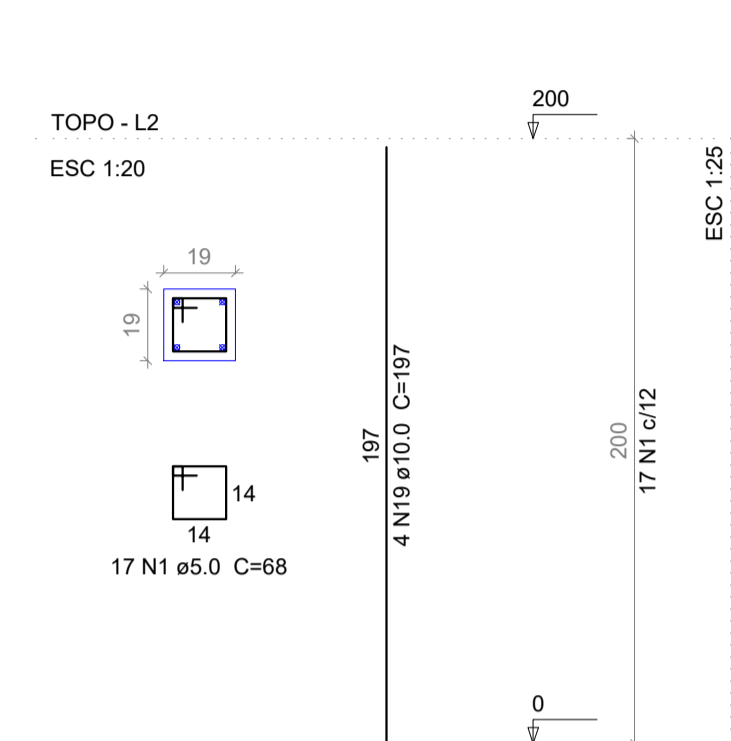
V7



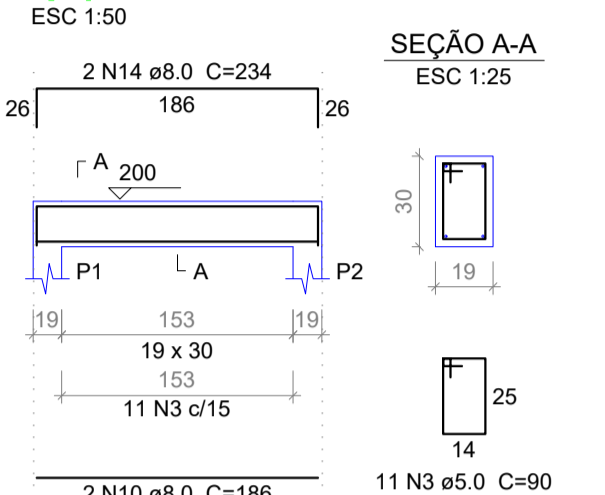
V8



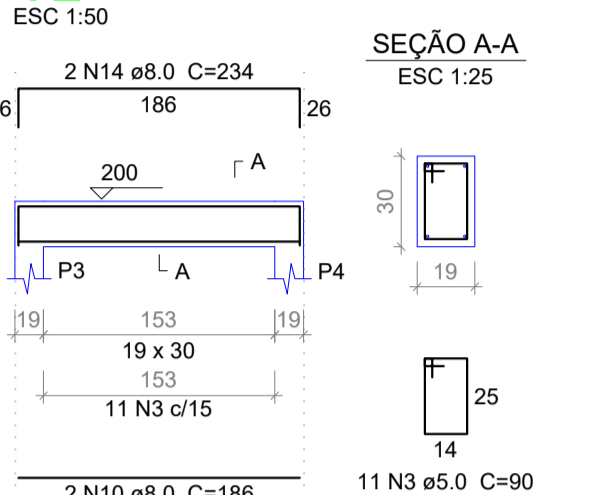
P1=P2=P3=P4=P5=P6=P7=P8=P9=P10



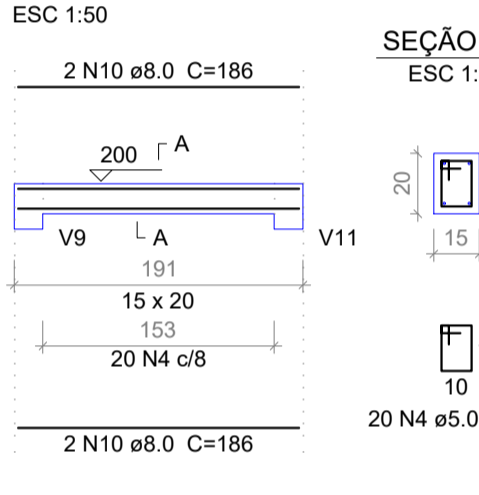
V1



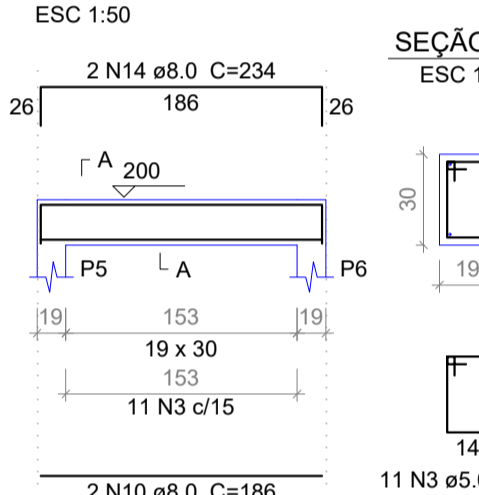
V2



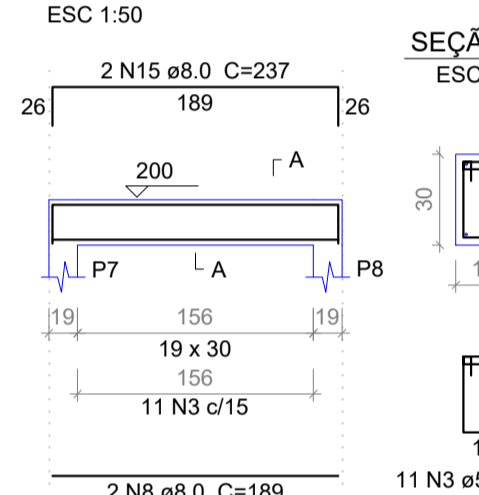
V3



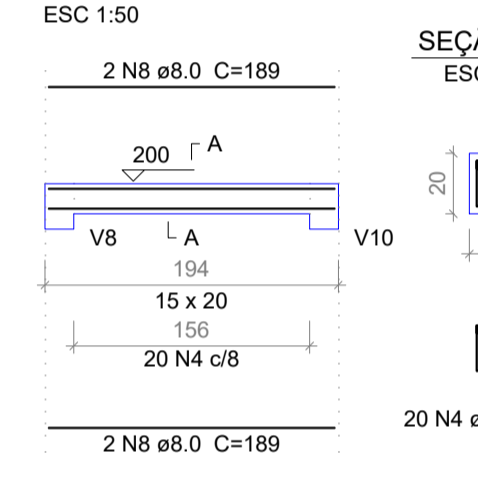
V4



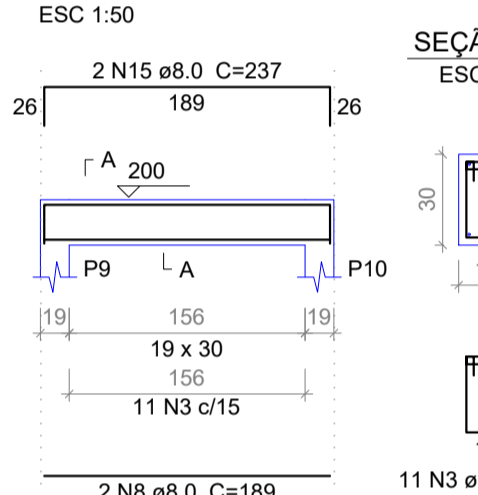
V5



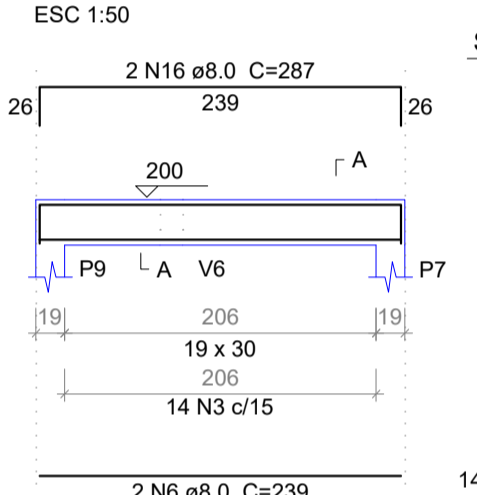
V6



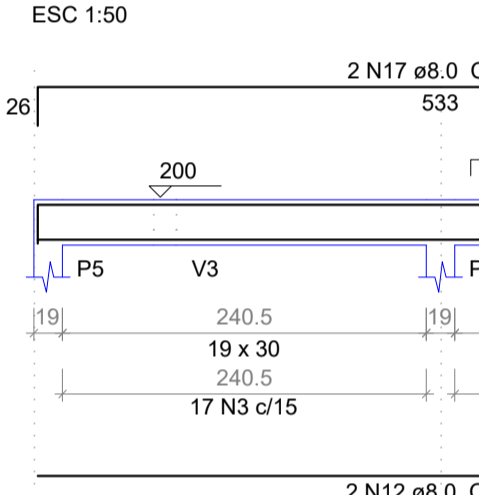
V7



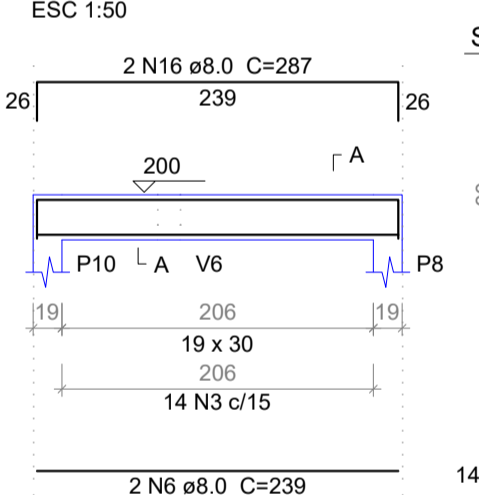
V8



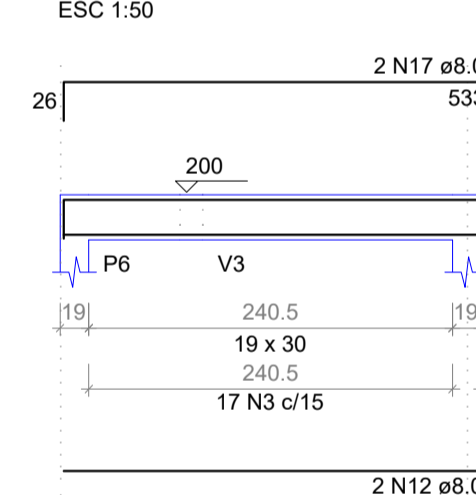
V9



V10



V11



Vigas

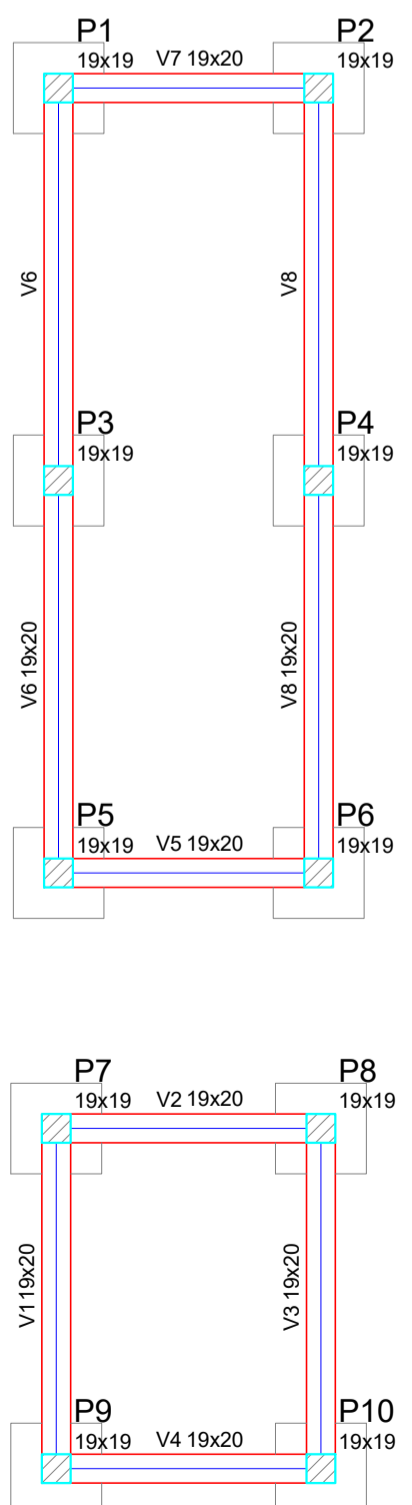
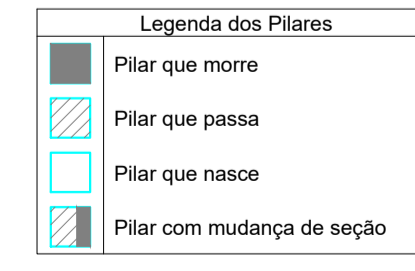
Nome	Seção (cm)	Elevação (cm)	Nível (cm)
V1	19x20	0	0
V2	19x20	0	0
V3	19x20	0	0
V4	19x20	0	0
V5	19x20	0	0
V6	19x20	0	0
V7	19x20	0	0
V8	19x20	0	0

Características dos materiais

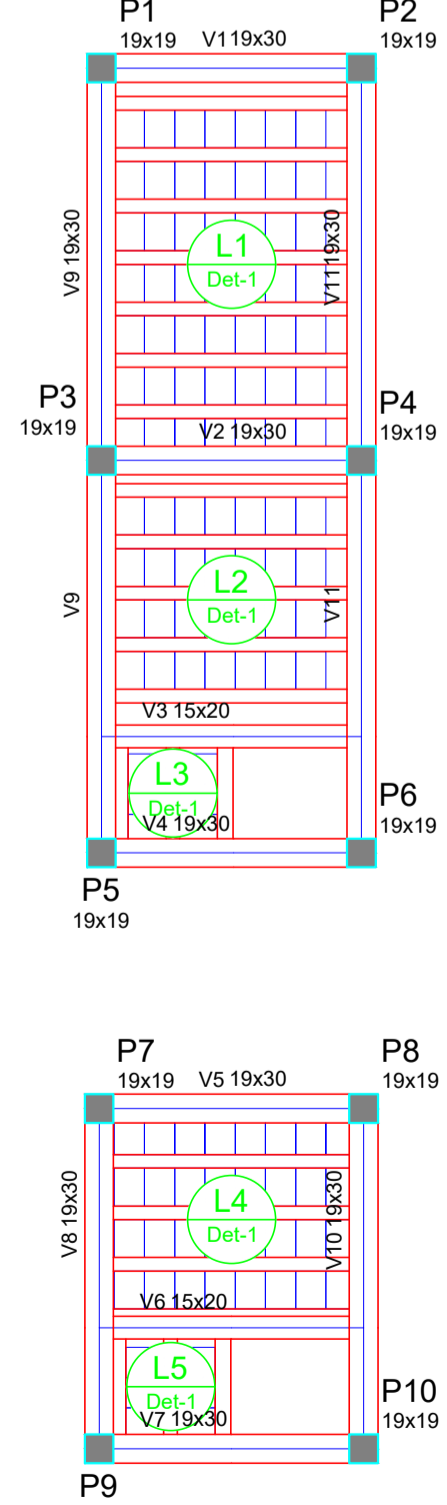
Elemento	f <sub>ck</sub> (kgf/cm <sup>2</sup> )	Ecs (kgf/cm <sup>2</sup> )
Vigas	250	238000
Pilares	250	238000
Sapatas	200	212874

Pilares

Nome	Seção (cm)	Elevação (cm)	Nível (cm)
P1	19 x 19	0	0
P2	19 x 19	0	0
P3	19 x 19	0	0
P4	19 x 19	0	0
P5	19 x 19	0	0
P6	19 x 19	0	0
P7	19 x 19	0	0
P8	19 x 19	0	0
P9	19 x 19	0	0
P10	19 x 19	0	0



Forma do pavimento Piso  
 escala 1:50



Forma do pavimento Topo  
 escala 1:50

Vigas

Nome	Seção (cm)	Elevação (cm)	Nível (cm)	Nome	Tipo	Altura (cm)	Elevação (cm)	Nível (cm)	Peso próprio (kgf/m <sup>2</sup> )	Adicional	Acidental	Localizada
V1	19x30	0	200	L1	Trelçada 1D	12	0	200	259	0	150	-
V2	19x30	0	200	L2	Trelçada 1D	12	0	200	259	0	150	-
V3	15x20	0	200	L3	Trelçada 1D	12	0	200	259	0	150	-
V4	19x30	0	200	L4	Trelçada 1D	12	0	200	259	0	150	-
V5	19x30	0	200	L5	Trelçada 1D	12	0	200	259	0	150	-
V6	15x20	0	200									
V7	19x30	0	200									
V8	19x30	0	200									
V9	19x30	0	200									
V10	19x30	0	200									
V11	19x30	0	200									

Características dos materiais

Elemento	f <sub>ck</sub> (kgf/cm <sup>2</sup> )	Ecs (kgf/cm <sup>2</sup> )
Vigas	250	238000
Pilares	250	238000
Lajes	200	212874

Blocos de enchimento

Detalhe	Tipo	Nome	Dimensões (cm)	Quantidade
1	Lajota cerâmica	B8/25/20	8   25   20	121

Pilares

Nome	Seção (cm)	Elevação (cm)	Nível (cm)
P1	19 x 19	0	200
P2	19 x 19	0	200
P3	19 x 19	0	200
P4	19 x 19	0	200
P5	19 x 19	0	200
P6	19 x 19	0	200
P7	19 x 19	0	200
P8	19 x 19	0	200
P9	19 x 19	0	200
P10	19 x 19	0	200

PREFEITURA MUNICIPAL DE PEDRA BRANCA

Projeto: CONSTRUÇÃO DE UMA UBS PORTE 1

Conteúdo: FOSSA E SUMIDOURO

Local: PEDRA BRANCA

Data: JUN/2024

Projeta: Ronis

Área Total: -

Área Construída: -

Esc: INDICADA

Responsável: Eng. Civil Heitor Vieira Lima Verde - CREA/CE - 55096

Secretaria de Desenvolvimento Urbano e Meio Ambiente

Rua: José Joaquim de Souza, nº10 - Centro, Pedra Branca - Ce, 63630-000 - CNPJ: 07.726.540/0001-04

20/20