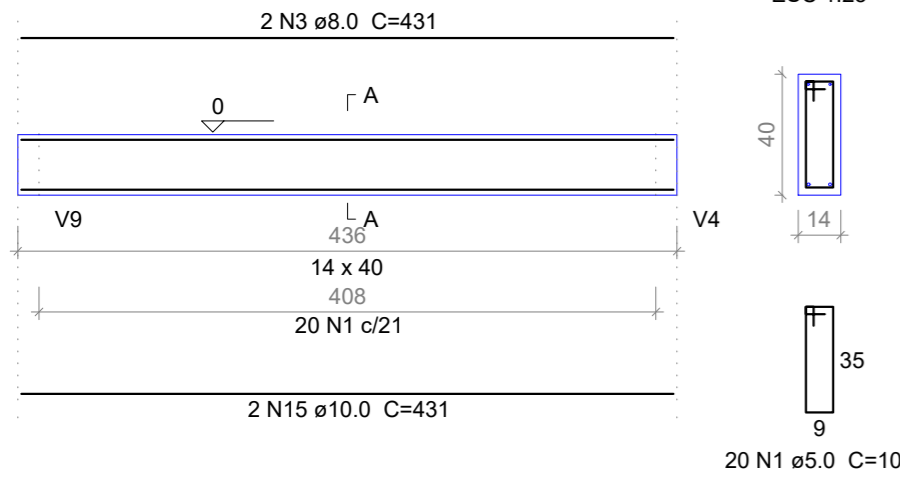
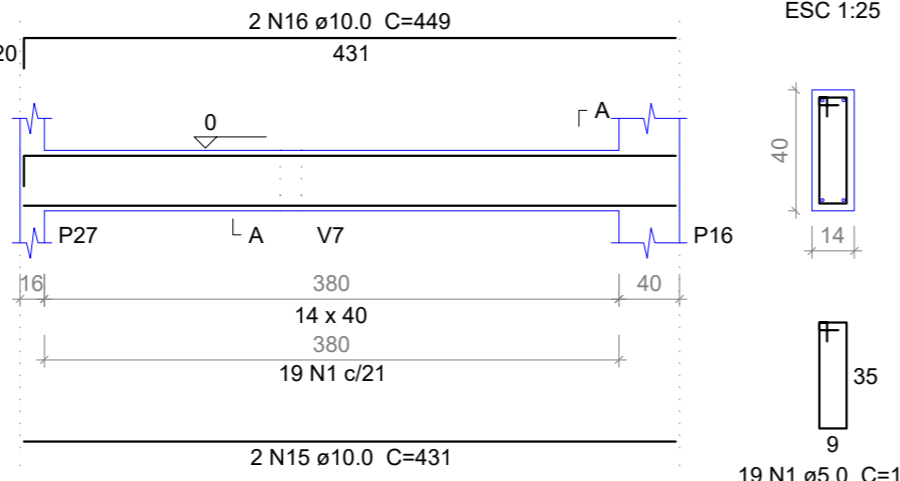


V22

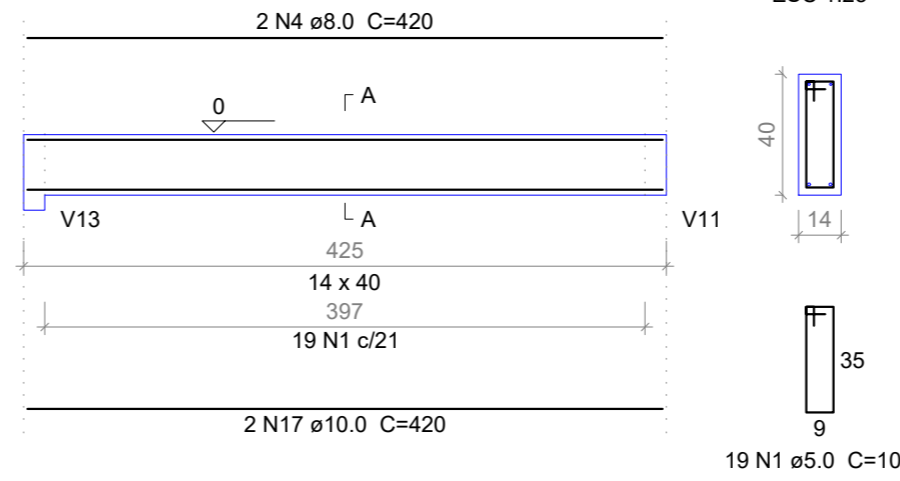
ESC 1:50

**V23**

ESC 1:50

**V24**

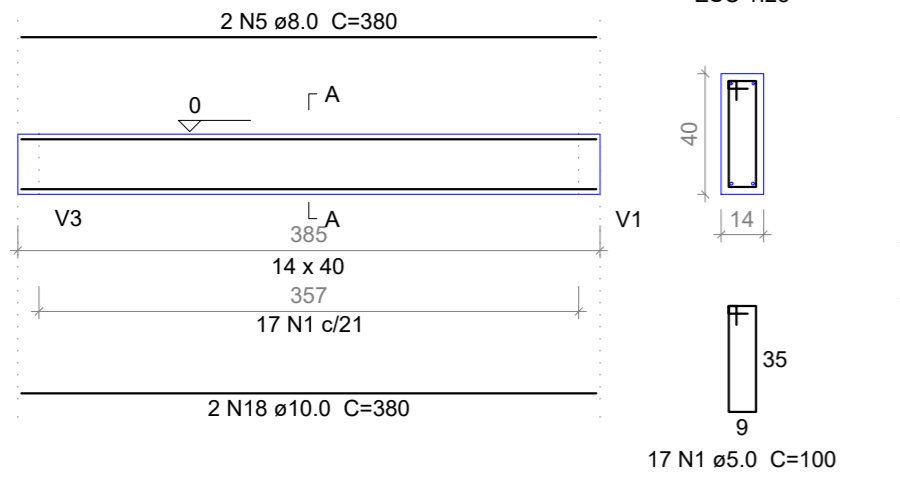
ESC 1:50

**Relação do aço**

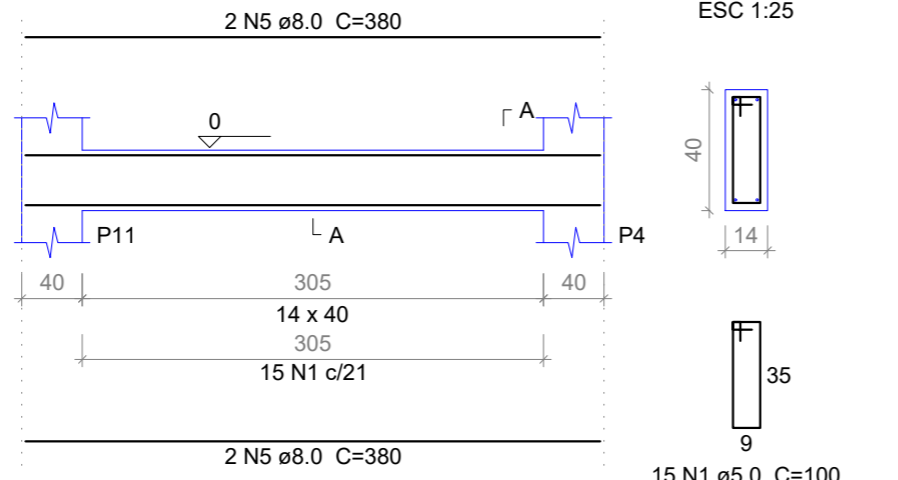
AÇO	N	DIAM	Q	UNIT (cm)	C.TOTAL (cm)
V22					
V23					
V24					
V25					
V26					
V27					
V28					
V29					
V30					
V31					
V32					
V33					
V34					

V25

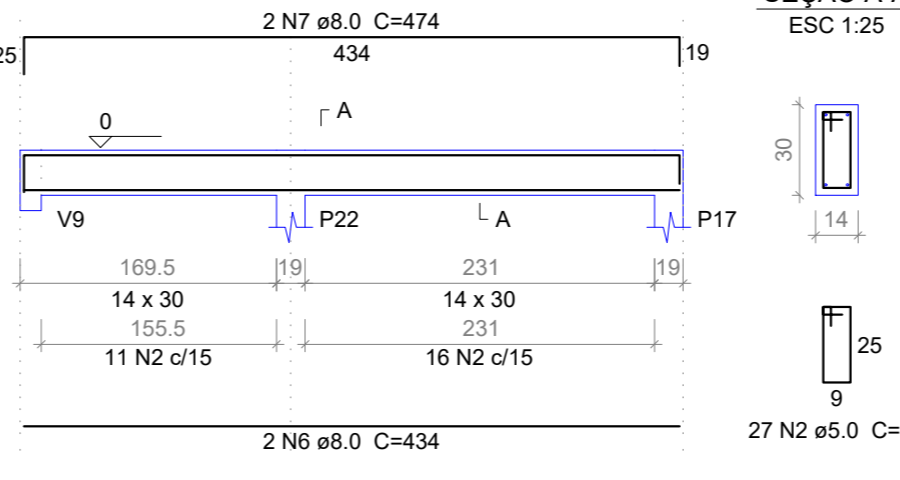
ESC 1:50

**V26**

ESC 1:50

**V27**

ESC 1:50

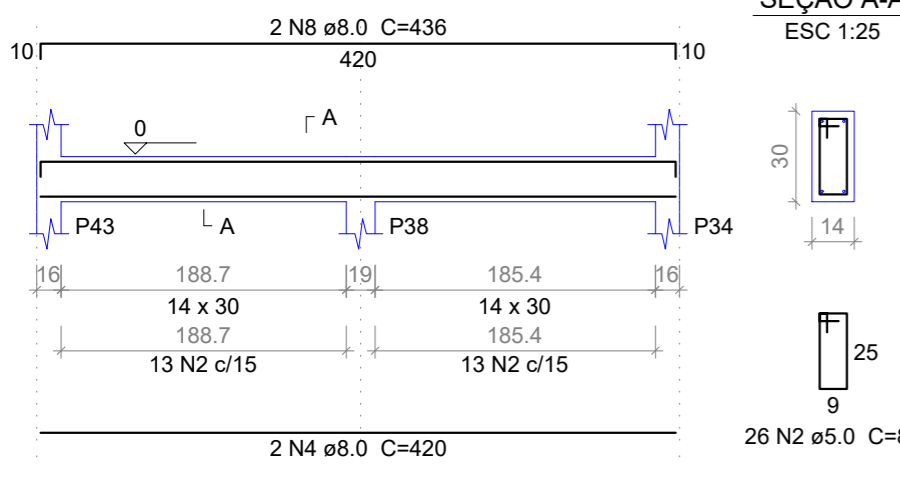
**Resumo do aço**

AÇO	DIAM	C.TOTAL (m)	PESO (kg)
CA50	8.0	146.9	57.91
	10.0	42.3	26.00
	12.5	17.7	17.00
CA60	5.0	231	35.64
PESO TOTAL			
CA50	100.91		
CA60	35.64		

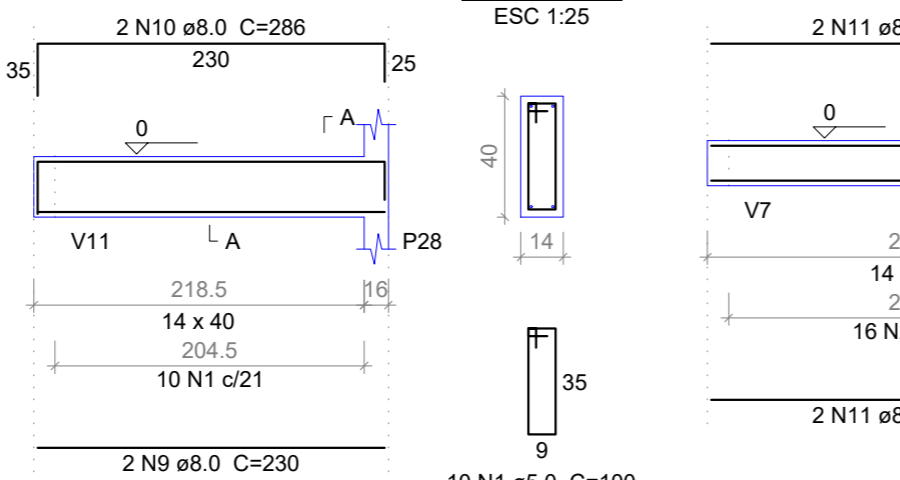
Vol. de concreto total (C-25) = 2.59 m³
 Área de forma total = 44.09 m²

V28

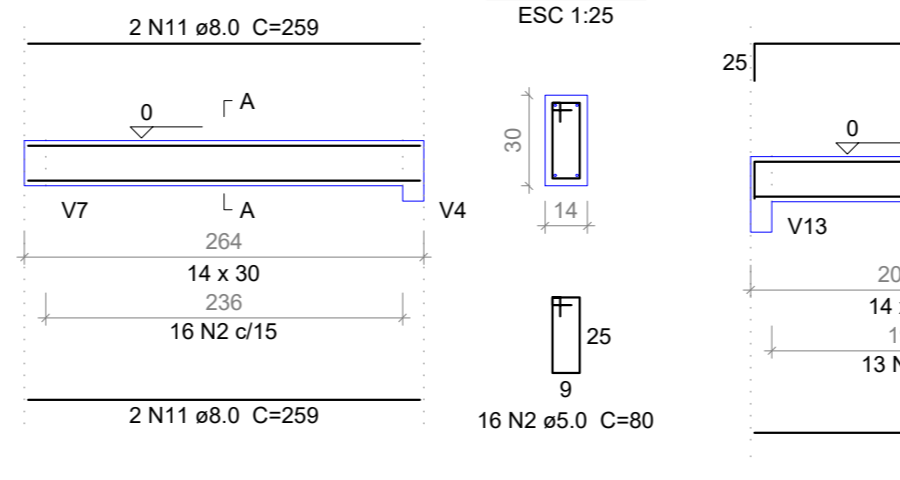
ESC 1:50

**V29**

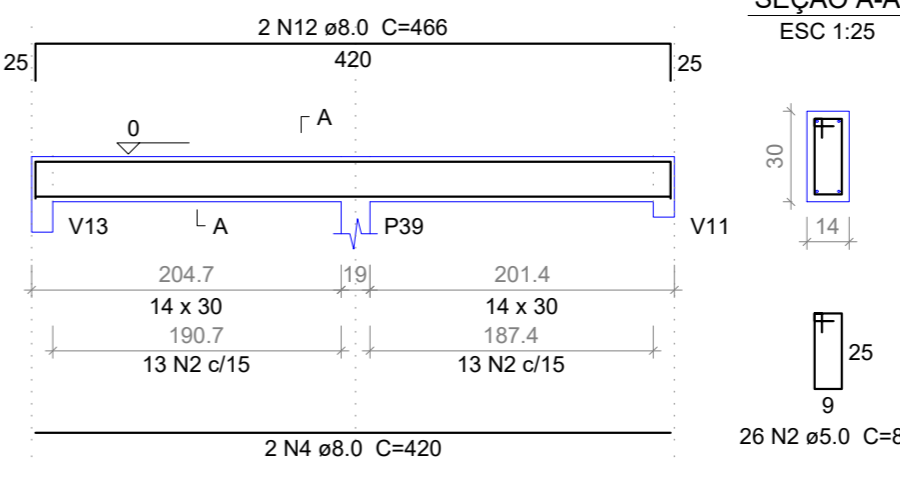
ESC 1:50

**V30**

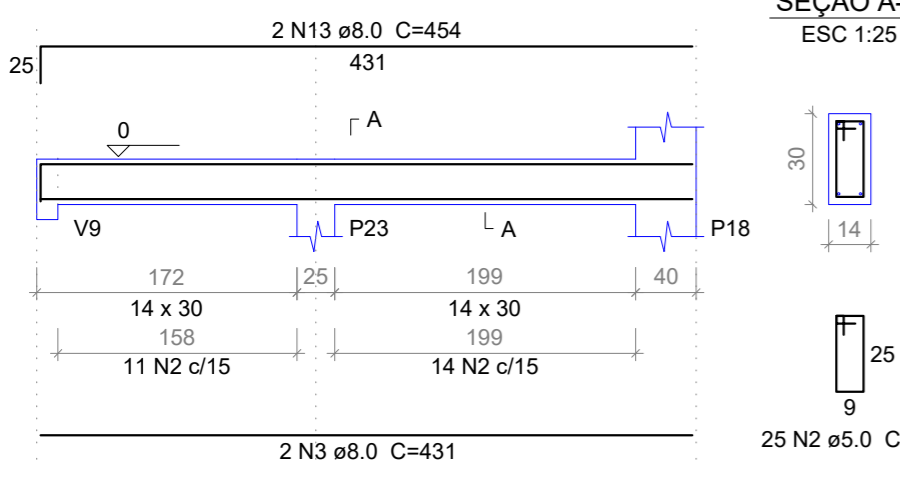
ESC 1:50

**V31**

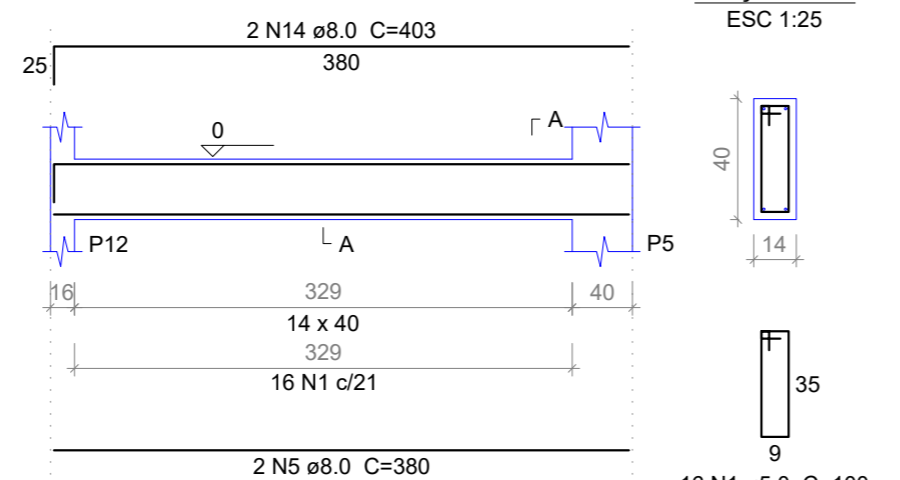
ESC 1:50

**V32**

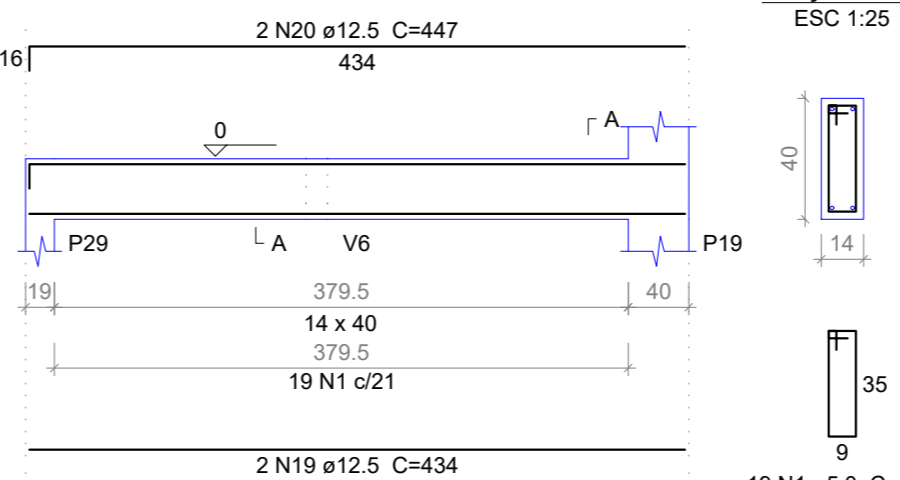
ESC 1:50

**V33**

ESC 1:50

**V34**

ESC 1:50

**PREFEITURA MUNICIPAL DE PEDRA BRANCA**

Projeto: CONSTRUÇÃO DE UMA UBS PORTE 1

Conteúdo: VIGAS BALDRAMES V22 ATÉ V34

Local: PEDRA BRANCA

Data: JUN/2024

Projetista: Ronis

Área Total: -

Área Construída: -

Esc: INDICADA

Responsável: Eng. Civil Heitor Vieira Lima Verde - CREA/CE - 55096

Secretaria de Desenvolvimento Urbano e Meio Ambiente
Rua: José Joaquim de Souza, nº10 - Centro, Pedra Branca - Ce, 63630-000 - CNPJ: 07.726.540/0001-04**09/20**