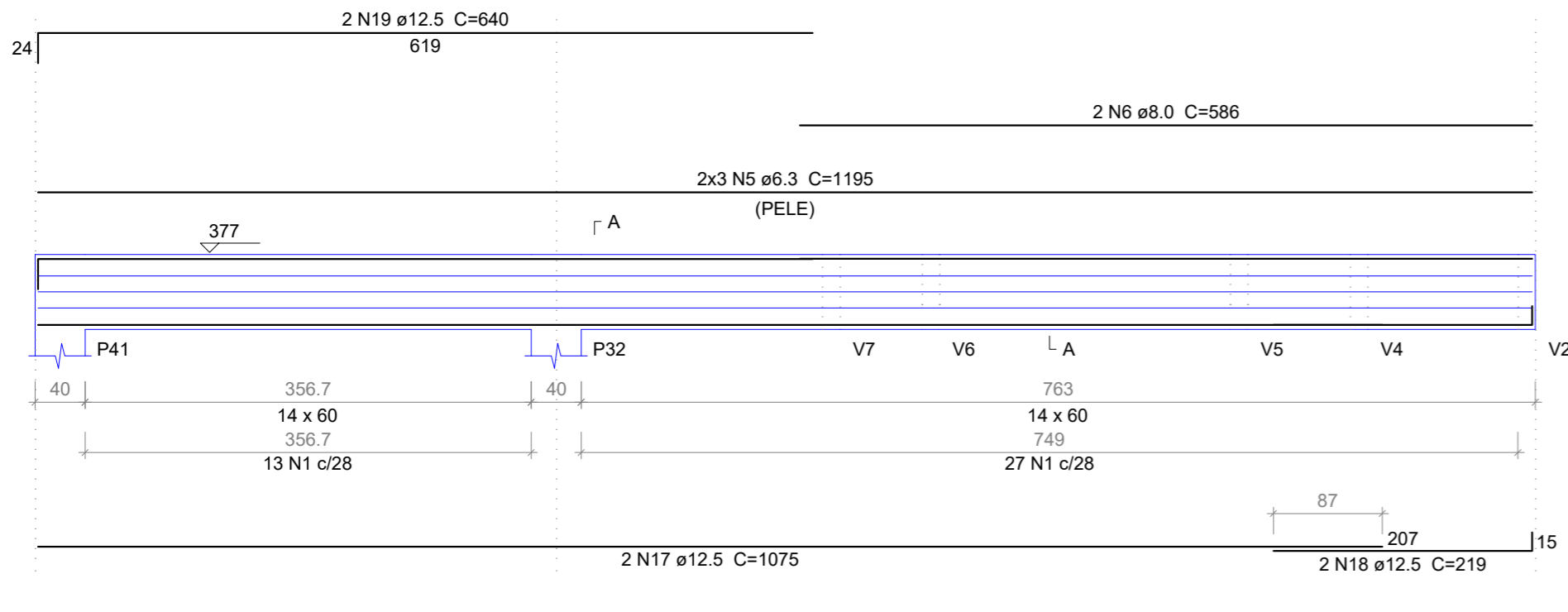


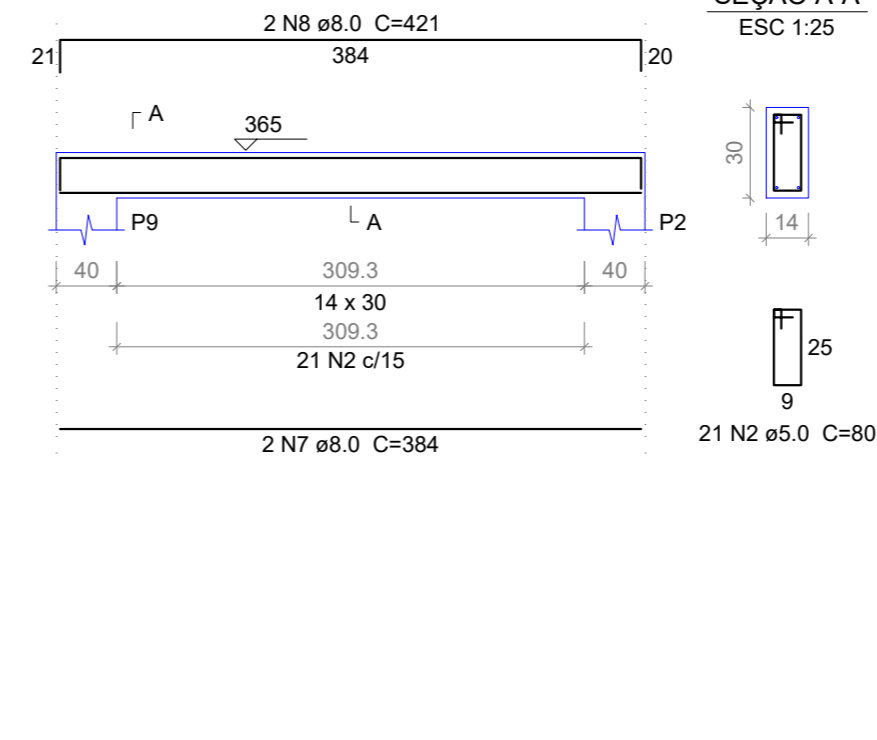
V13

ESC 1:50



V14

ESC 1:50

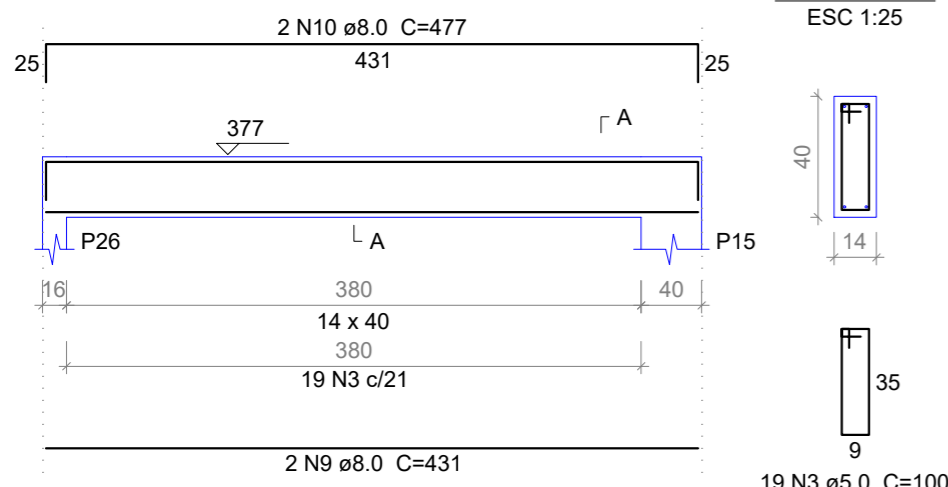


Relação do aço

AÇO	N	DIAM	Q	UNIT (cm)	C.TOTAL (cm)
CA60	1	5.0	40	140	5600
	2	5.0	63	80	5040
	3	5.0	106	100	10600
	4	5.0	15	120	1800
CA50	5	6.3	6	1195	7170
	6	8.0	2	586	1172
	7	8.0	2	384	768
	8	8.0	2	421	842
	9	8.0	10	431	4310
	10	8.0	4	477	1908
	11	8.0	4	380	1520
	12	8.0	4	418	1672
	13	8.0	2	420	840
	14	10.0	2	639	1278
	15	10.0	2	689	1378
	16	10.0	2	431	862
	17	12.5	2	1075	2150
	18	12.5	2	219	438
	19	12.5	2	640	1280
	20	12.5	2	444	888

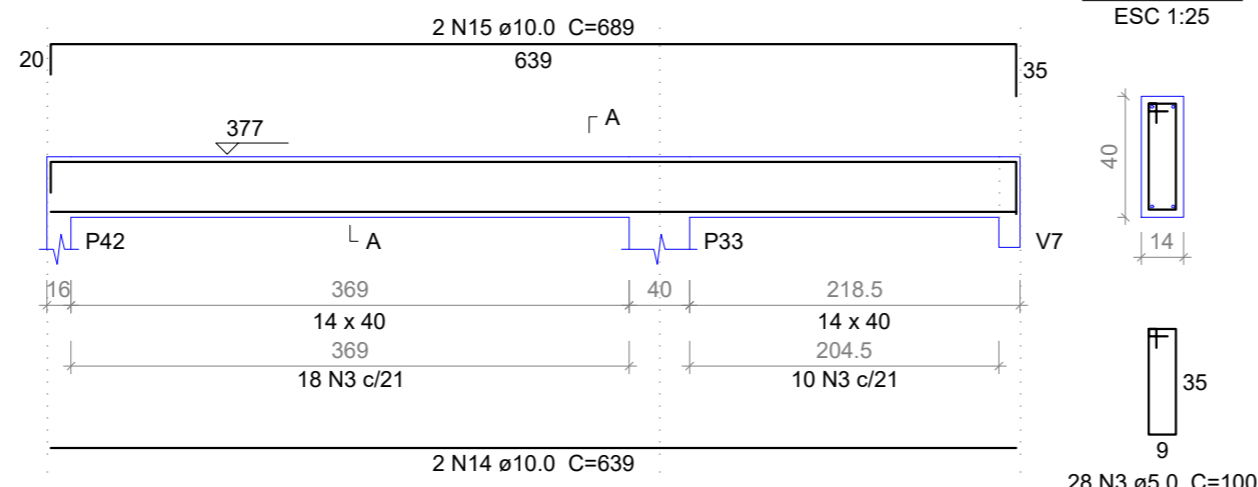
V15

ESC 1:50



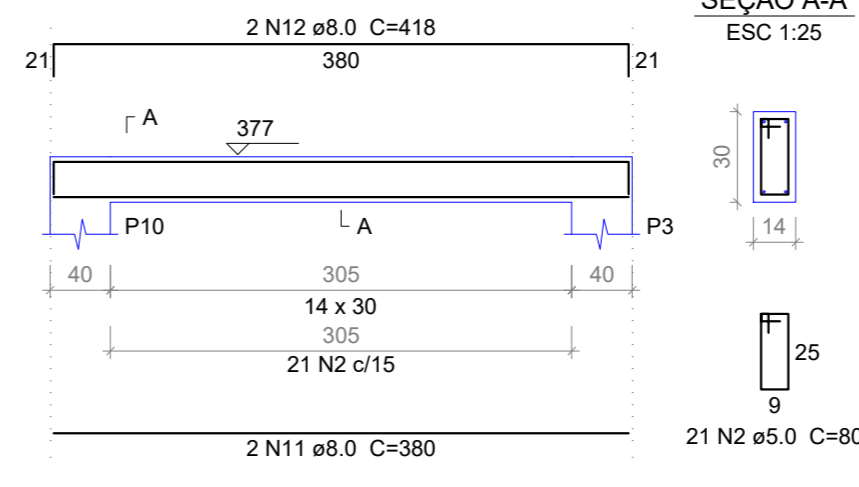
V16

ESC 1:50



V17

ESC 1:50



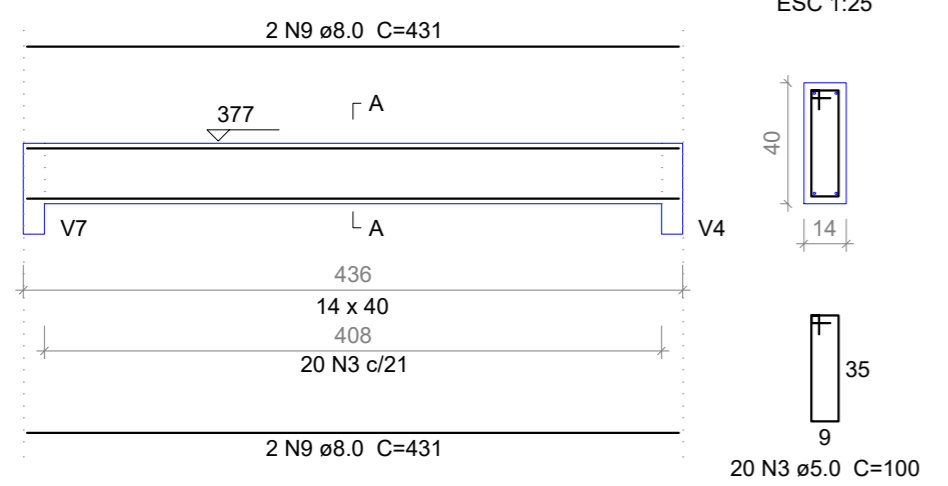
Resumo do aço

AÇO	DIAM	C.TOTAL (m)	PESO (kg)
CA50	6.3	71.7	17.55
	8.0	130.4	51.45
	10.0	35.2	21.73
	12.5	47.6	45.82
CA60	5.0	230.4	35.55
PESO TOTAL			
CA50		136.55	
CA60		35.55	

Vol. de concreto total (C-25) = 3.13 m³
Área de forma total = 51.94 m²

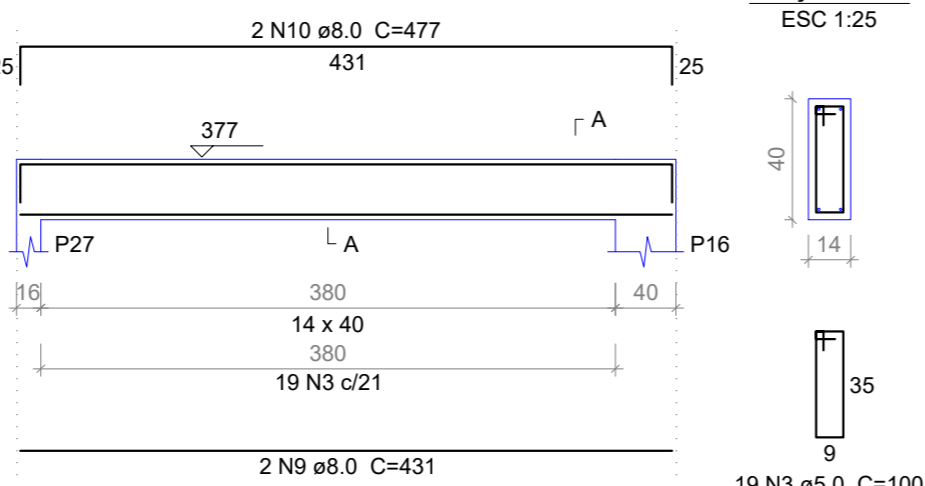
V18

ESC 1:50



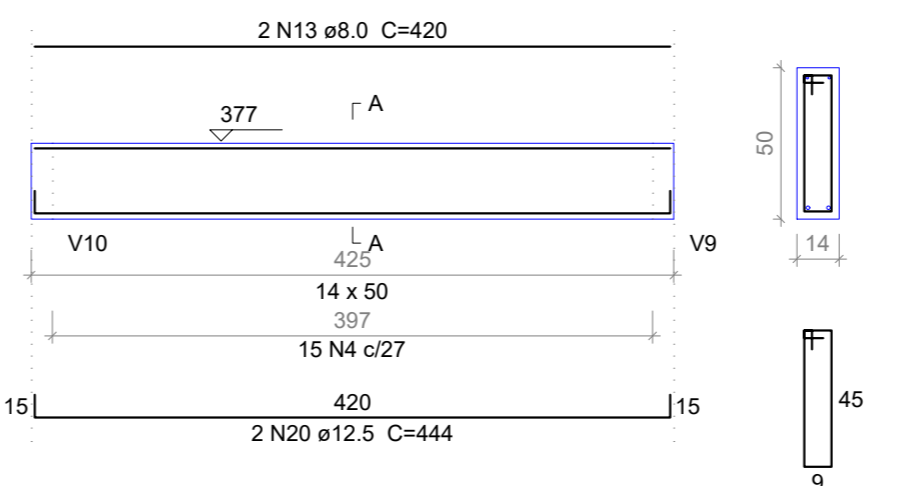
V19

ESC 1:50



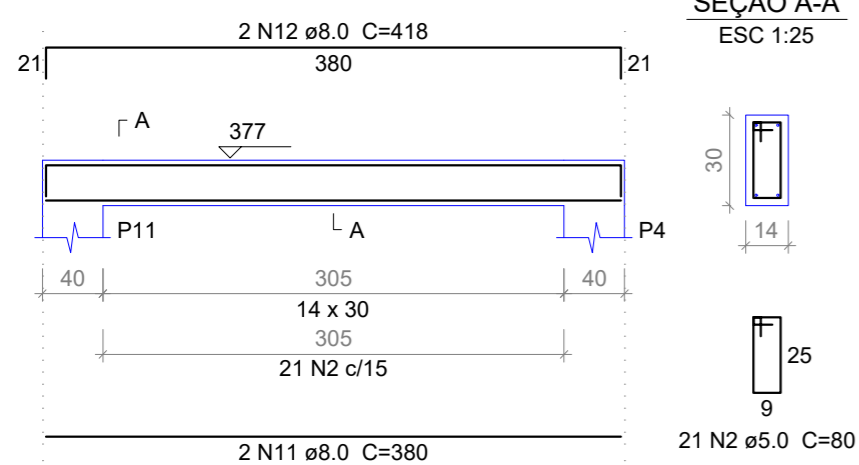
V20

ESC 1:50



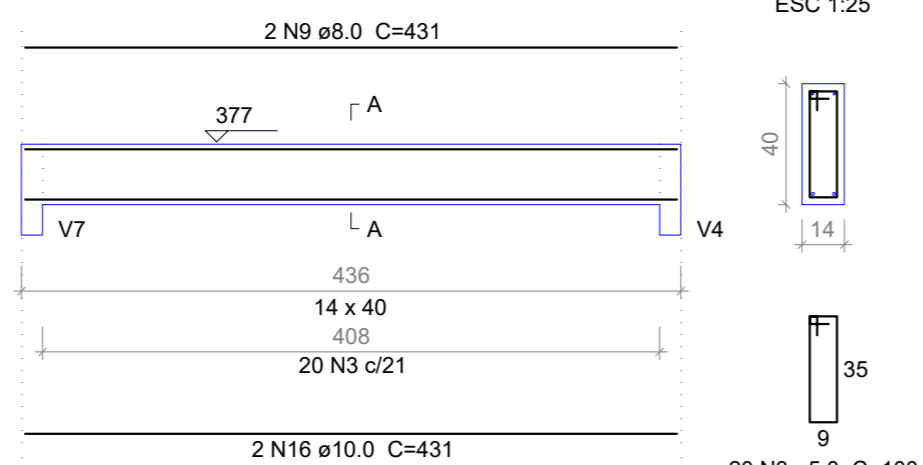
V21

ESC 1:50



V22

ESC 1:50



PREFEITURA MUNICIPAL DE PEDRA BRANCA

Projeto: CONSTRUÇÃO DE UMA UBS PORTE 1

Conteúdo: VIGAS DO TÉRREO V13 ATÉ V22

Local: PEDRA BRANCA

Data: JUN/2024

Projetista: Ronis

Área Total: -

Área Construída: -

Esc: INDICADA

Responsável: Eng. Civil Heitor Vieira Lima Verde - CREA/CE - 55096

Secretaria de Desenvolvimento Urbano e Meio Ambiente
Rua: José Joaquim de Souza, nº10 - Centro, Pedra Branca - Ce, 63630-000 - CNPJ: 07.726.540/0001-04

17/20