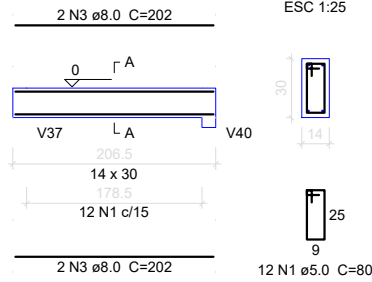
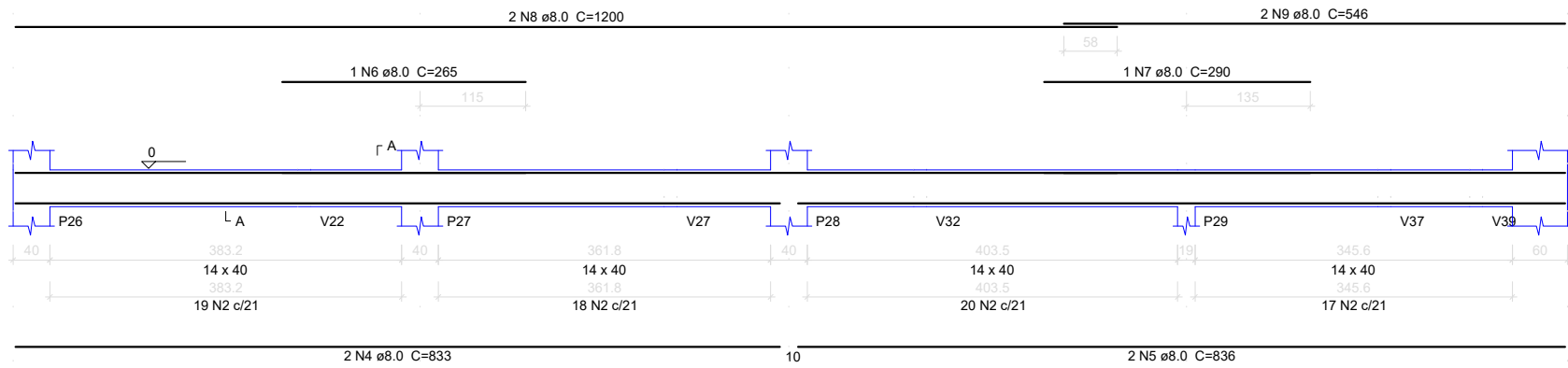


V8  
ESC 1:50



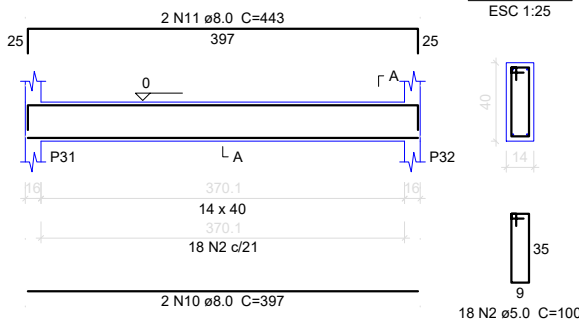
V9  
ESC 1:50



Relação do aço

AÇO	N	DIAM	Q	UNIT (cm)	C.TOTAL (cm)
CA60	1	5.0	26	80	2080
	2	5.0	183	100	18300
CA50	3	8.0	4	202	808
	4	8.0	2	833	1666
	5	8.0	2	836	1672
	6	8.0	1	265	265
	7	8.0	1	290	290
	8	8.0	2	1200	2400
	9	8.0	2	546	1092
	10	8.0	2	397	794
	11	8.0	2	443	886
	12	8.0	2	230	460
	13	8.0	2	264	528
	14	10.0	2	422	844
	15	10.0	2	916	1832
	16	12.5	1	390	390
	17	12.5	2	1197	2394
	18	12.5	2	881	1762
	19	16.0	2	622	1244

V10  
ESC 1:50

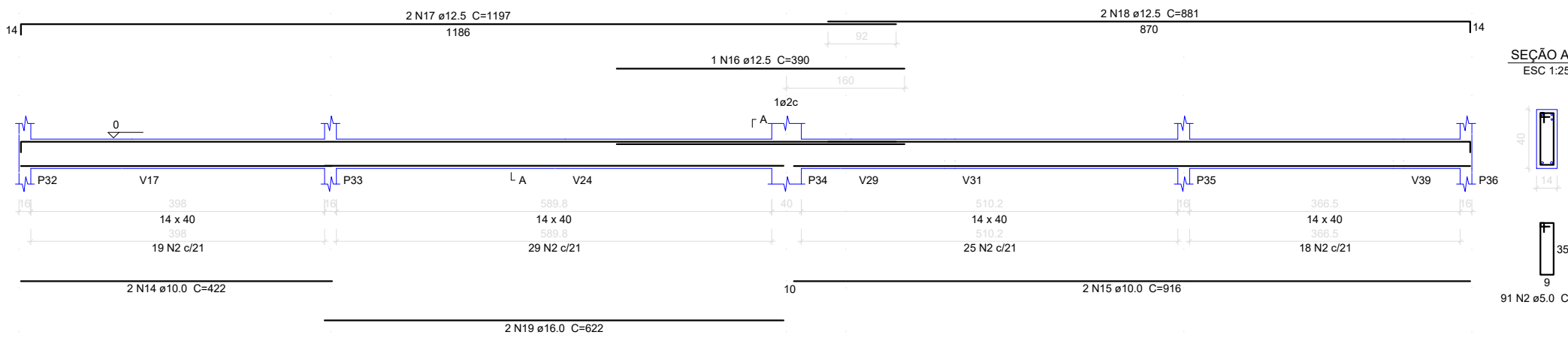


Resumo do aço

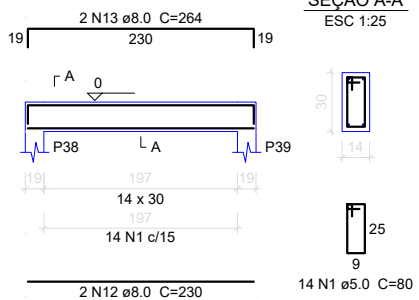
AÇO	DIAM	C.TOTAL (m)	PESO (kg)
CA50	8.0	108.7	42.82
	10.0	26.8	16.45
	12.5	45.5	43.82
	16.0	12.5	19.64
CA60	5.0	203.8	31.45
<b>PESO TOTAL</b>			
CA50		122.73	
CA60		31.45	

Vol. de concreto total (C-25) = 2.46 m³  
Área de forma total = 41.47 m²

V11  
ESC 1:50



V12  
ESC 1:50



PREFEITURA MUNICIPAL DE PEDRA BRANCA

Projeto: CONSTRUÇÃO DE UMA UBS PORTE 1  
Conteúdo: VIGAS BALDRAMES V8 ATÉ V12

Local: PEDRA BRANCA	Data: JUN/2024	Esc: INDICADA
Projetista: Ronis	Área Total: -	
Responsável: Eng. Civil Heitor Vieira Lima Verde - CREA/CE - 55096		<b>07/20</b>
Secretaria de Desenvolvimento Urbano e Meio Ambiente Rua: José Joaquim de Souza, nº10 - Centro, Pedra Branca - Ce, 63630-000 - CNPJ: 07.726.540/0001-04		