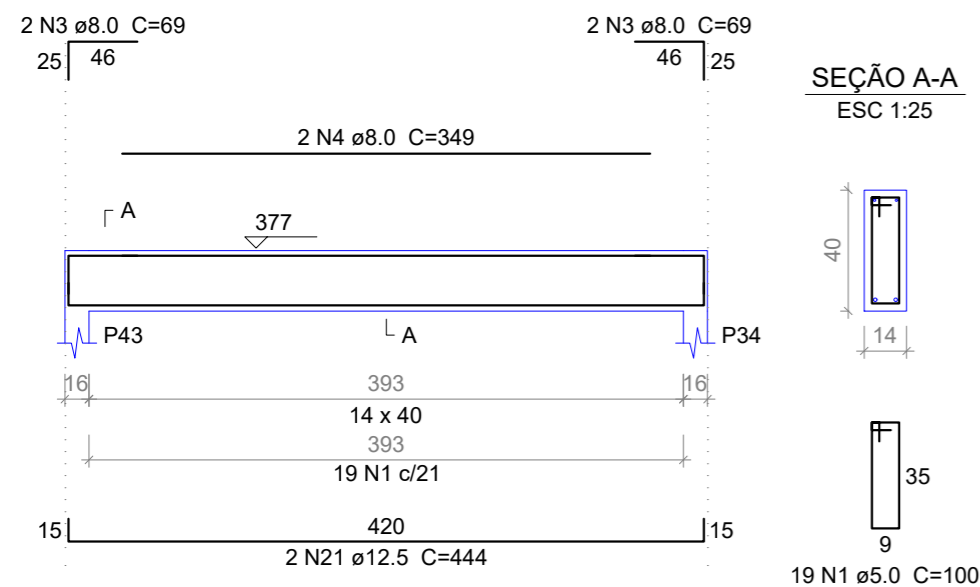


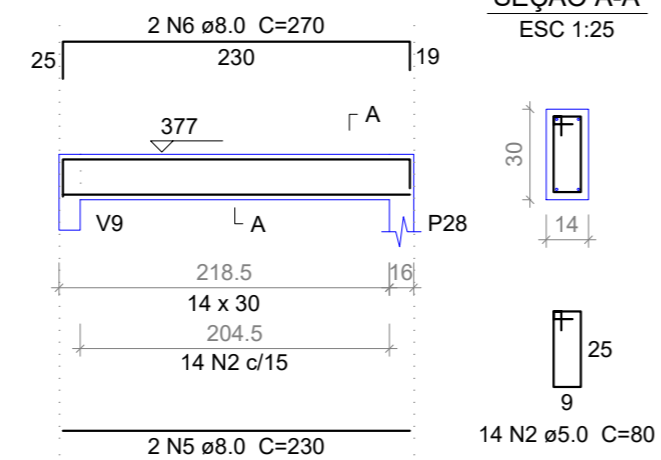
V23

ESC 1:50



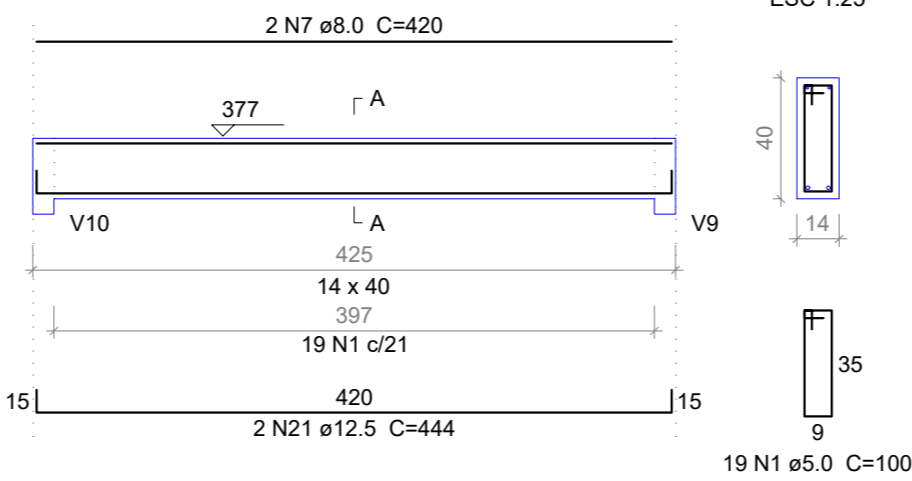
V24

ESC 1:50



V25

ESC 1:50



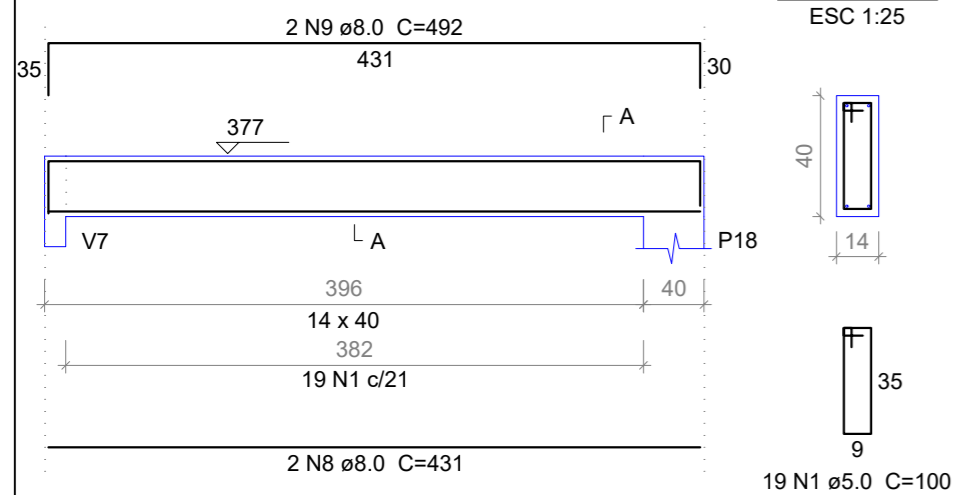
Relação do aço

AÇO	N	DIAM	Q	UNIT (cm)	C.TOTAL (cm)
V23					
V24					
V25					
V26					
V27					
V28					
V29					
V30					
V31					
V32					

AÇO	N	DIAM	Q	UNIT (cm)	C.TOTAL (cm)
CA60	1	5.0	114	100	11400
	2	5.0	151	80	12080
CA50	3	8.0	4	69	276
	4	8.0	2	349	698
	5	8.0	2	230	460
	6	8.0	2	270	540
	7	8.0	2	420	840
	8	8.0	6	431	2586
	9	8.0	2	492	984
	10	8.0	4	380	1520
	11	8.0	2	423	846
	12	8.0	2	422	844
	13	8.0	1	393	393
	14	8.0	2	1057	2114
	15	8.0	2	517	1034
	16	8.0	1	534	534
	17	8.0	2	1198	2396
	18	8.0	2	458	916
	19	10.0	2	431	862
	20	10.0	2	499	998
	21	12.5	4	444	1776
	22	12.5	2	432	864
	23	12.5	2	466	932

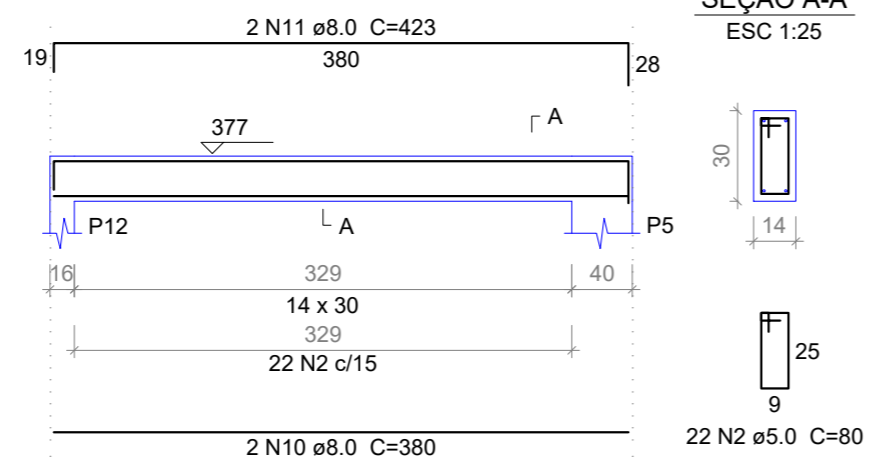
V26

ESC 1:50



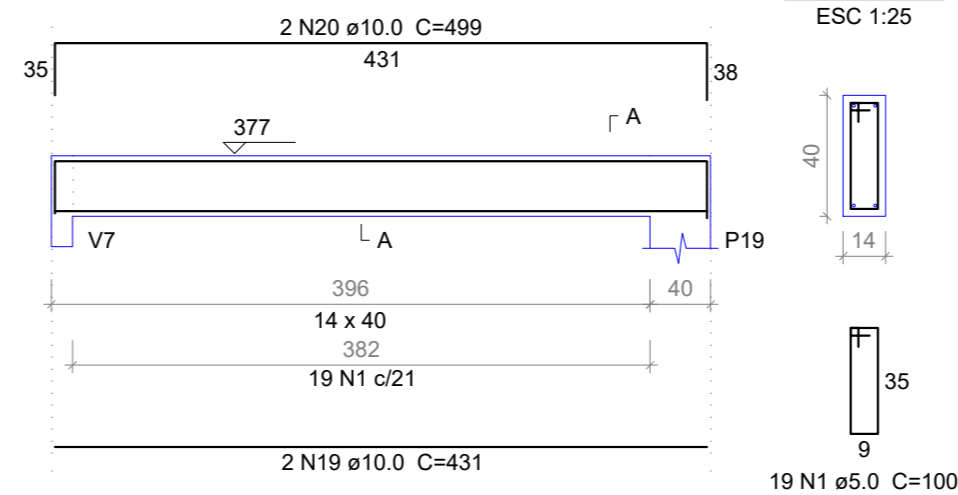
V27

ESC 1:50



V28

ESC 1:50



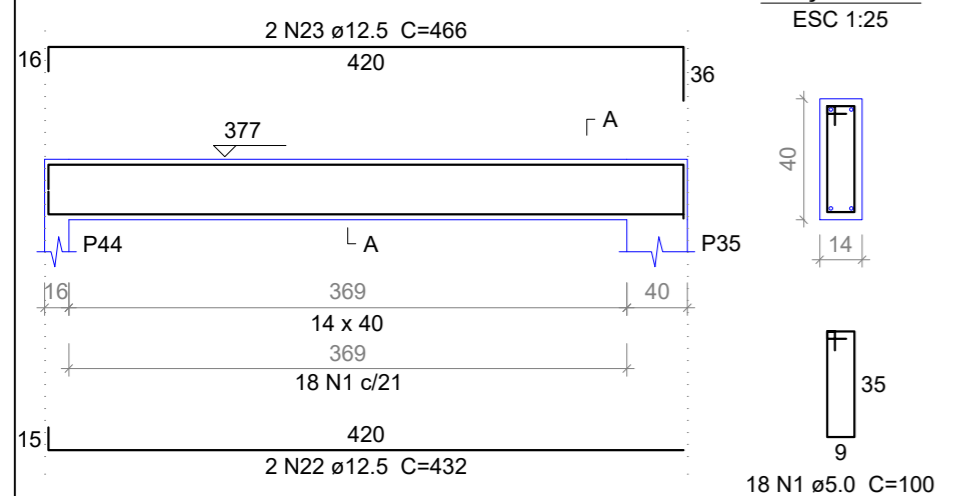
Resumo do aço

AÇO	DIAM	C.TOTAL (m)	PESO (kg)
CA50	8.0	169.9	67.00
	10.0	18.6	11.45
	12.5	35.8	34.45
CA60	5.0	234.8	36.18
PESO TOTAL			
CA50	112.90		
CA60	36.18		

Vol. de concreto total (C-25) = 2,53 m³
Área de forma total = 43,37 m²

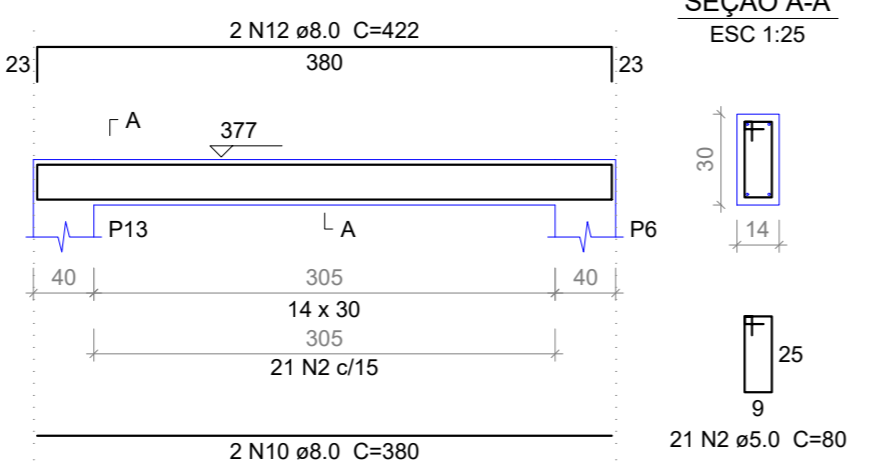
V29

ESC 1:50



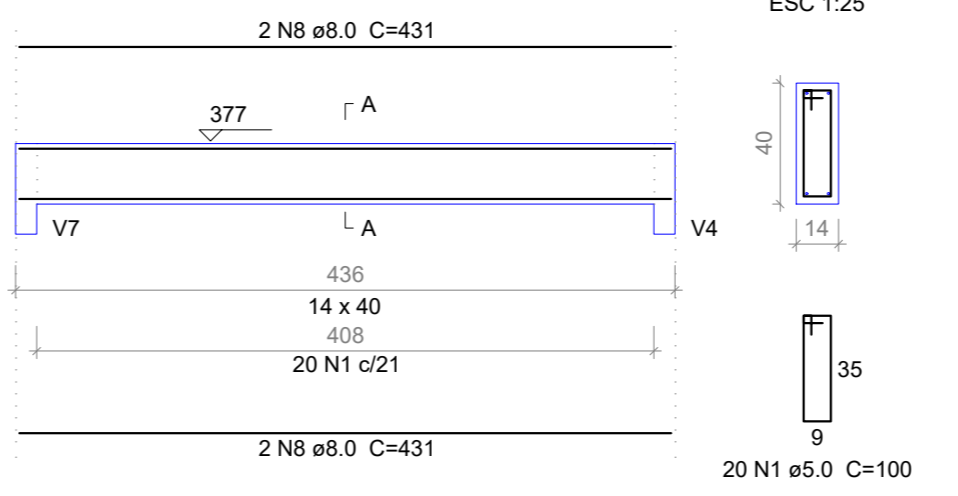
V30

ESC 1:50



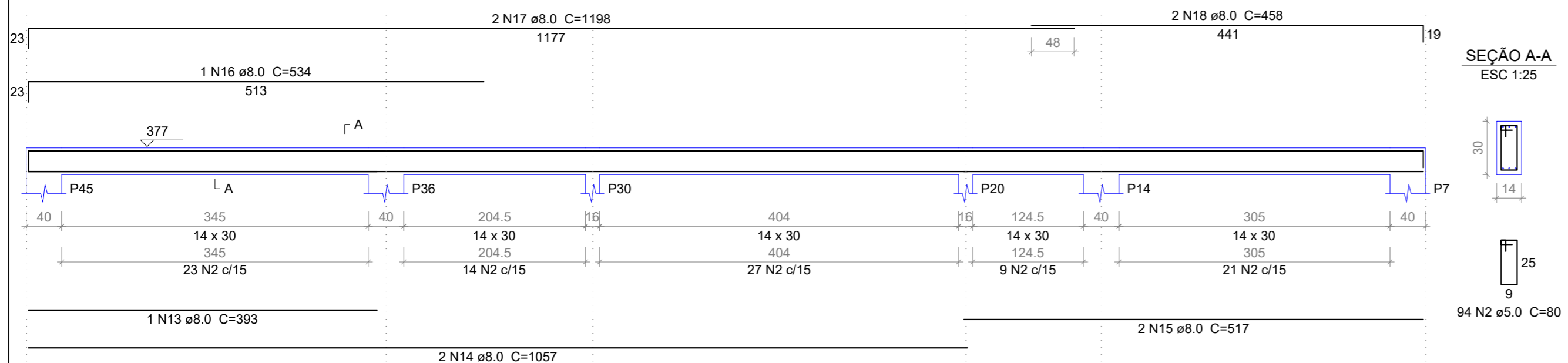
V31

ESC 1:50



V32

ESC 1:50



PREFEITURA MUNICIPAL DE PEDRA BRANCA

Projeto: CONSTRUÇÃO DE UMA UBS PORTE 1

Conteúdo: VIGAS DO TÉRREO V23 ATÉ V32

Local: PEDRA BRANCA

Data: JUN/2024

Projetista: Ronis

Área Total: -

Área Construída: -

Esc: INDICADA

Responsável: Eng. Civil Heitor Vieira Lima Verde - CREA/CE - 55096

Secretaria de Desenvolvimento Urbano e Meio Ambiente
Rua: José Joaquim de Souza, nº10 - Centro, Pedra Branca - Ce, 63630-000 - CNPJ: 07.726.540/0001-04

18/20