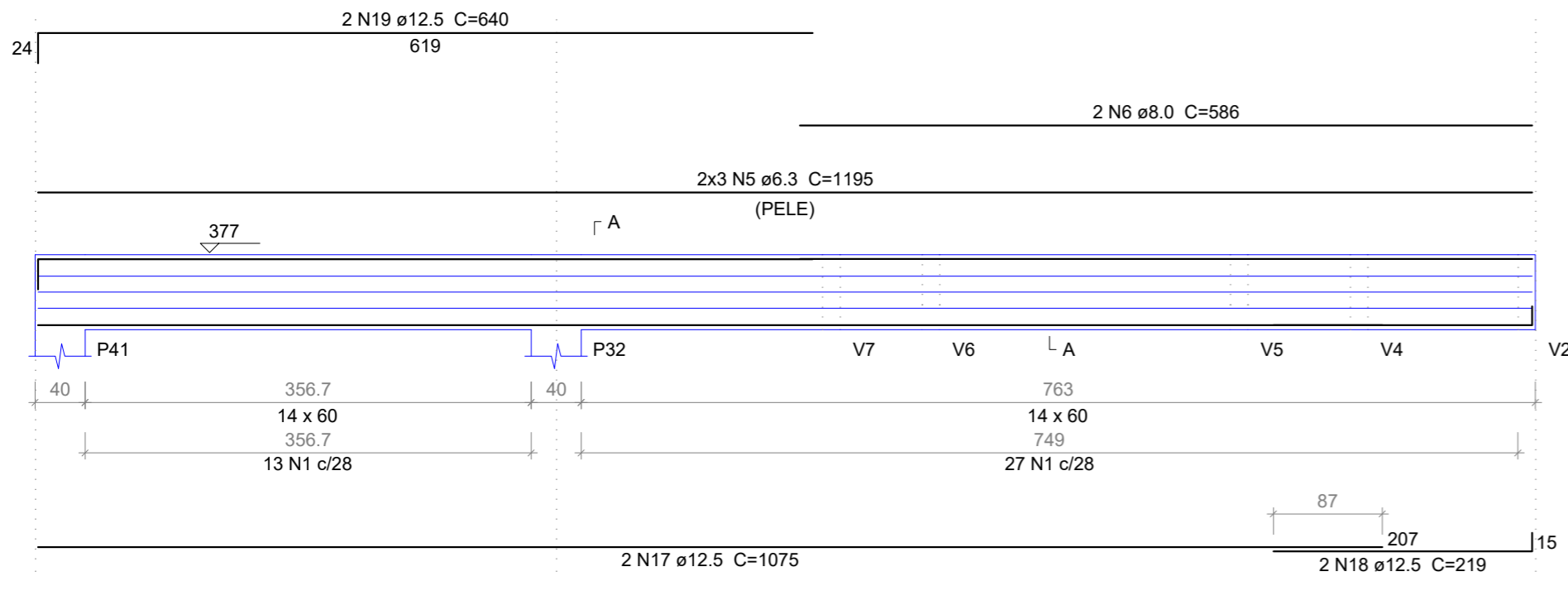


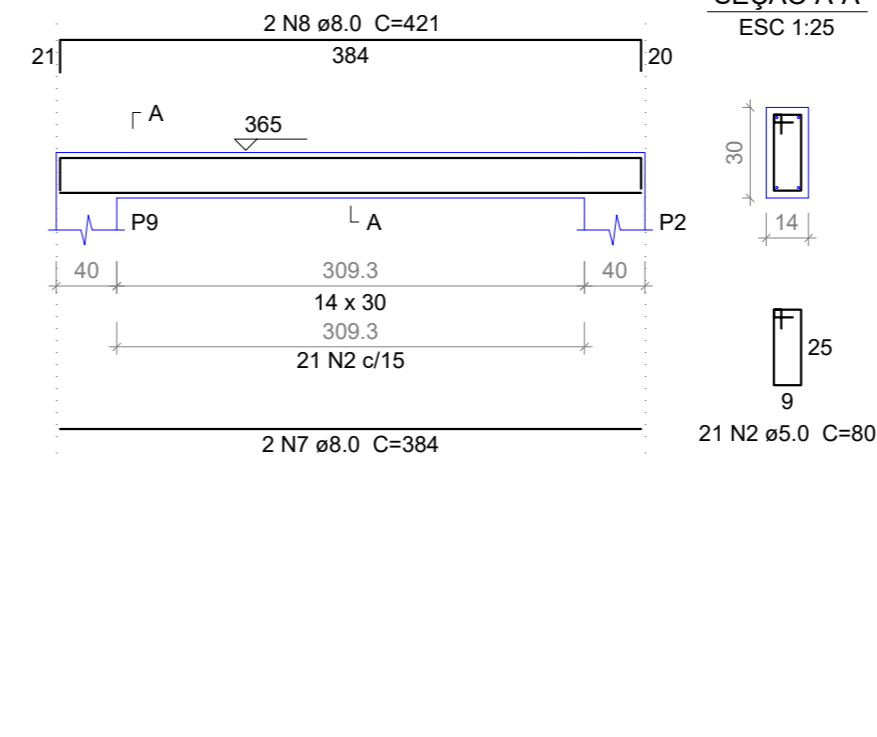
### V13

ESC 1:50



### V14

ESC 1:50

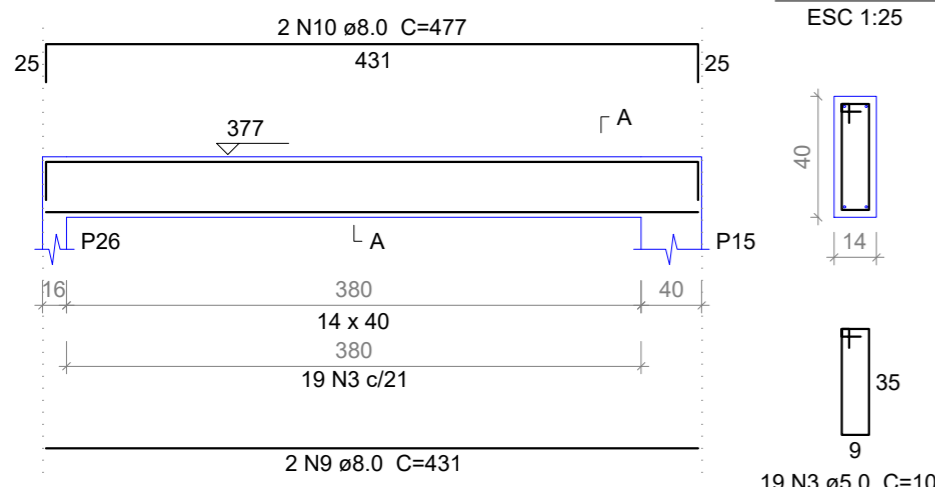


### Relação do aço

AÇO	N	DIAM	Q	UNIT (cm)	C.TOTAL (cm)
CA60	1	5.0	40	140	5600
	2	5.0	63	80	5040
	3	5.0	106	100	10600
	4	5.0	15	120	1800
CA50	5	6.3	6	1195	7170
	6	8.0	2	586	1172
	7	8.0	2	384	768
	8	8.0	2	421	842
	9	8.0	10	431	4310
	10	8.0	4	477	1908
	11	8.0	4	380	1520
	12	8.0	4	418	1672
	13	8.0	2	420	840
	14	10.0	2	639	1278
	15	10.0	2	689	1378
	16	10.0	2	431	862
	17	12.5	2	1075	2150
	18	12.5	2	219	438
	19	12.5	2	640	1280
	20	12.5	2	444	888

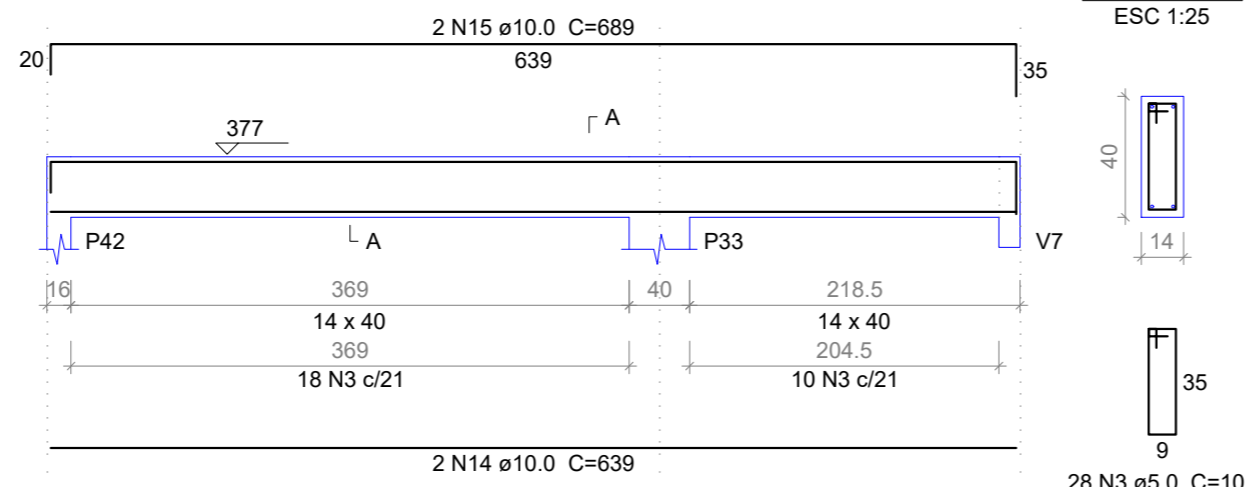
### V15

ESC 1:50



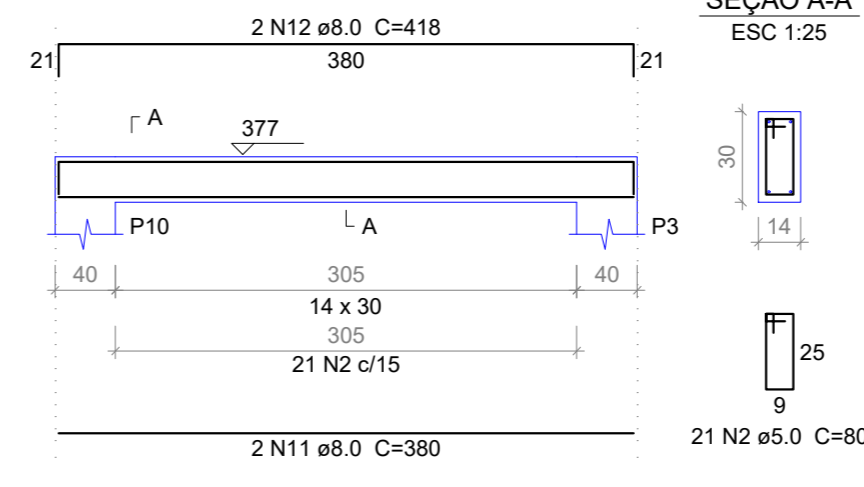
### V16

ESC 1:50



### V17

ESC 1:50



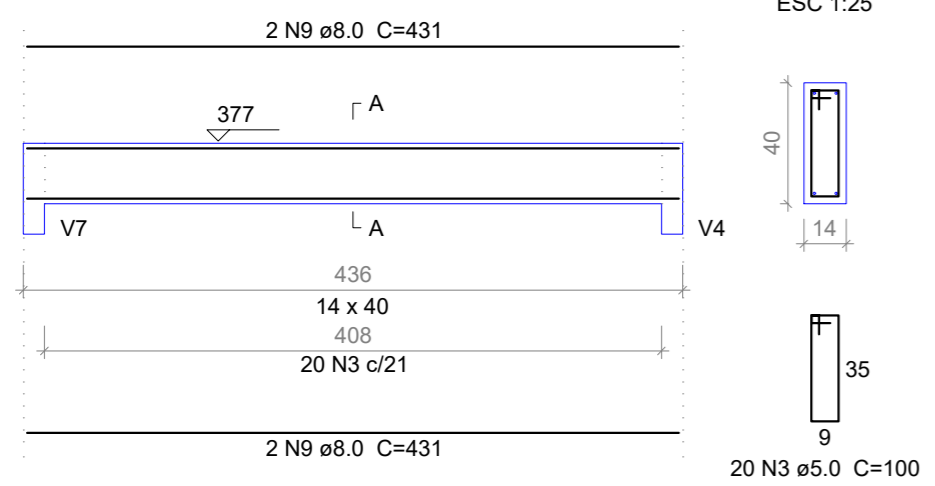
### Resumo do aço

AÇO	DIAM	C.TOTAL (m)	PESO (kg)
CA50	6.3	71.7	17.55
	8.0	130.4	51.45
	10.0	35.2	21.73
	12.5	47.6	45.82
CA60	5.0	230.4	35.55
<b>PESO TOTAL</b>			
CA50		136.55	
CA60		35.55	

Vol. de concreto total (C-25) = 3.13 m³  
Área de forma total = 51.94 m²

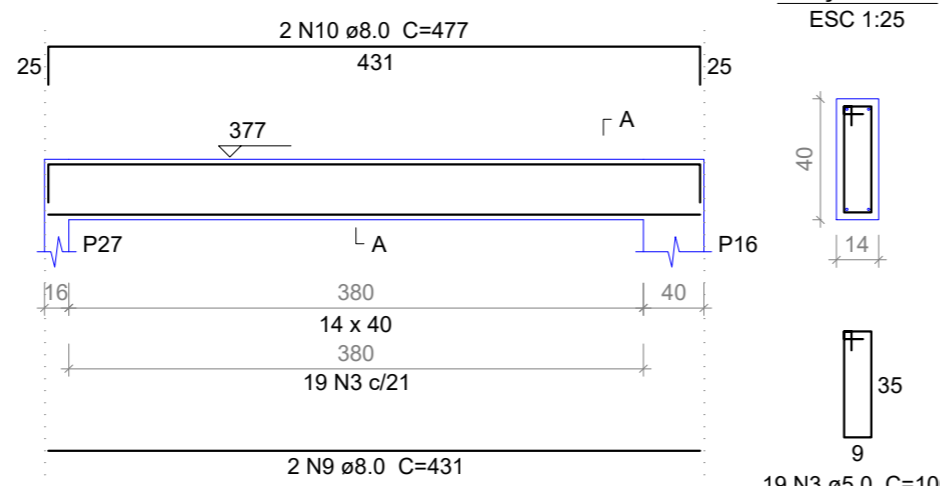
### V18

ESC 1:50



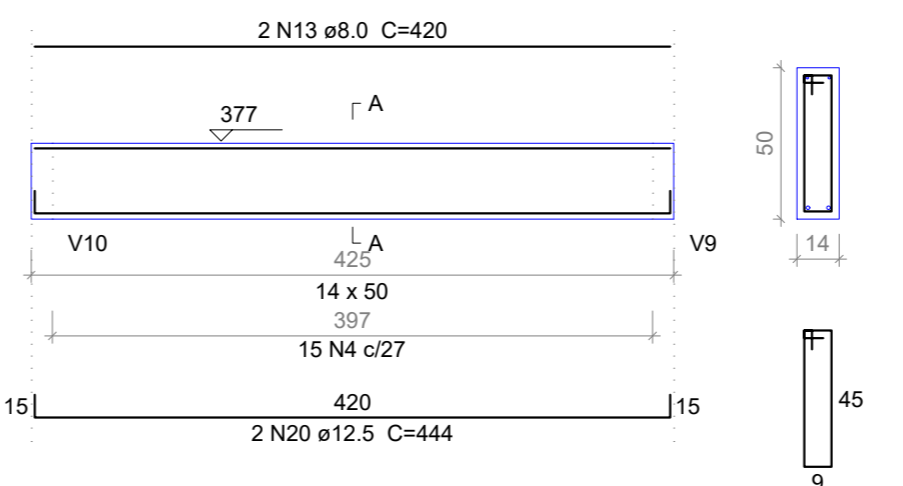
### V19

ESC 1:50



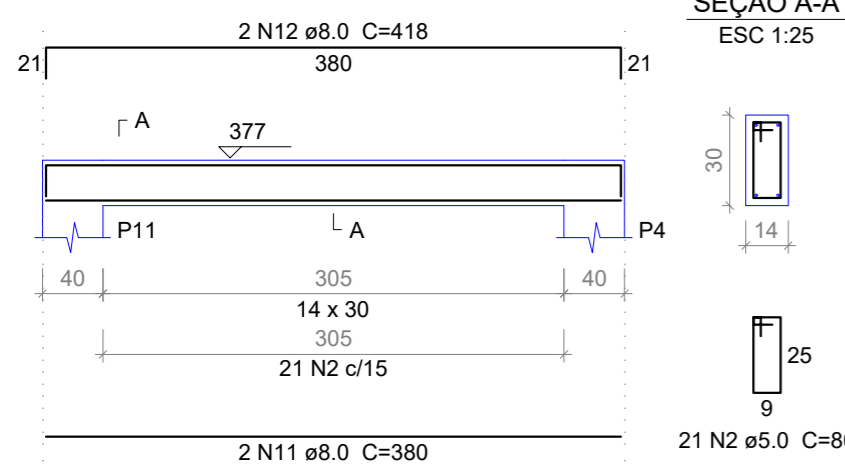
### V20

ESC 1:50



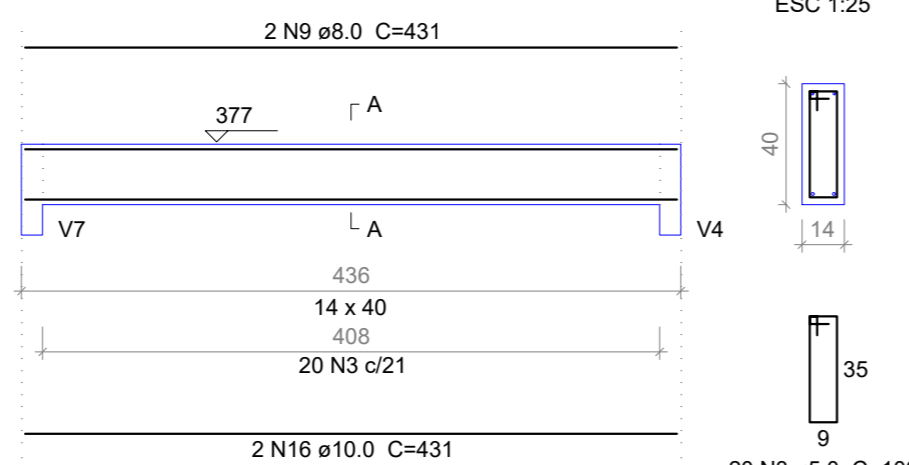
### V21

ESC 1:50



### V22

ESC 1:50



## PREFEITURA MUNICIPAL DE PEDRA BRANCA

Projeto: CONSTRUÇÃO DE UMA UBS PORTE 1

Conteúdo: VIGAS DO TÉRREO V13 ATÉ V22

Local: PEDRA BRANCA

Data: JUN/2024

Projetista: Ronis

Área Total: -

Área Construída: -

Esc: INDICADA

Responsável: Eng. Civil Heitor Vieira Lima Verde - CREA/CE - 55096

Secretaria de Desenvolvimento Urbano e Meio Ambiente  
Rua: José Joaquim de Souza, nº10 - Centro, Pedra Branca - Ce, 63630-000 - CNPJ: 07.726.540/0001-04

17/20