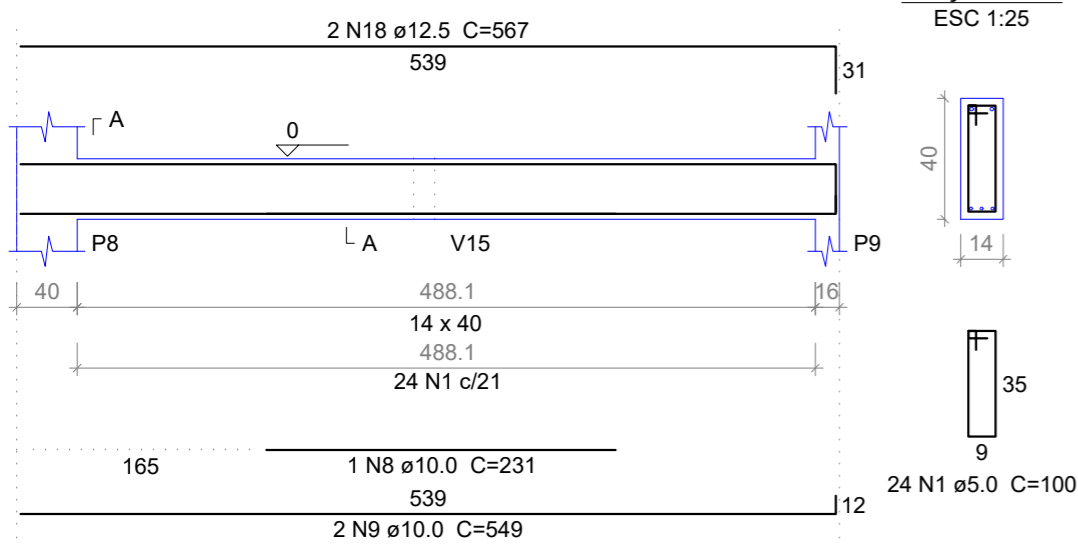


V2

ESC 1:50



SEÇÃO A-A
ESC 1:25

Relação do aço

ACO	N	DIAM	Q	UNIT (cm)	C.TOTAL (cm)
CA60	1	5.0	185	100	18500
	2	5.0	65	80	5200
CA50	3	8.0	4	202	808
	4	8.0	2	302	604
	5	8.0	2	350	700
	6	8.0	2	551	1102
	7	8.0	2	597	1194
	8	10.0	1	231	231
	9	10.0	2	549	1098
	10	10.0	2	1097	2194
	11	10.0	2	705	1410
	12	10.0	2	1198	2396
	13	10.0	2	724	1448
	14	10.0	2	989	1978
	15	10.0	2	704	1408
	16	10.0	2	1198	2396
	17	10.0	2	584	1168
	18	12.5	2	567	1134

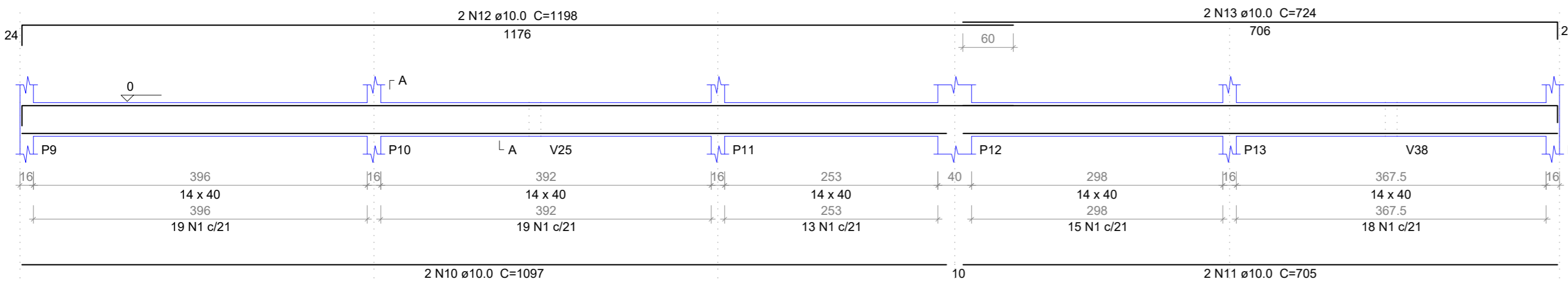
Resumo do aço

ACO	DIAM	C.TOTAL (m)	PESO (kg)
CA50	8.0	44.1	17,36
	10.0	157.3	97,00
	12.5	11.4	10,91
CA60	5.0	237	36,55
PESO TOTAL			
CA50		125,27	
CA60		36,55	

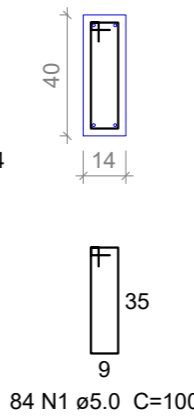
Vol. de concreto total (C-25) = 2.72 m³
Área de forma total = 46.11 m²

V3

ESC 1:50

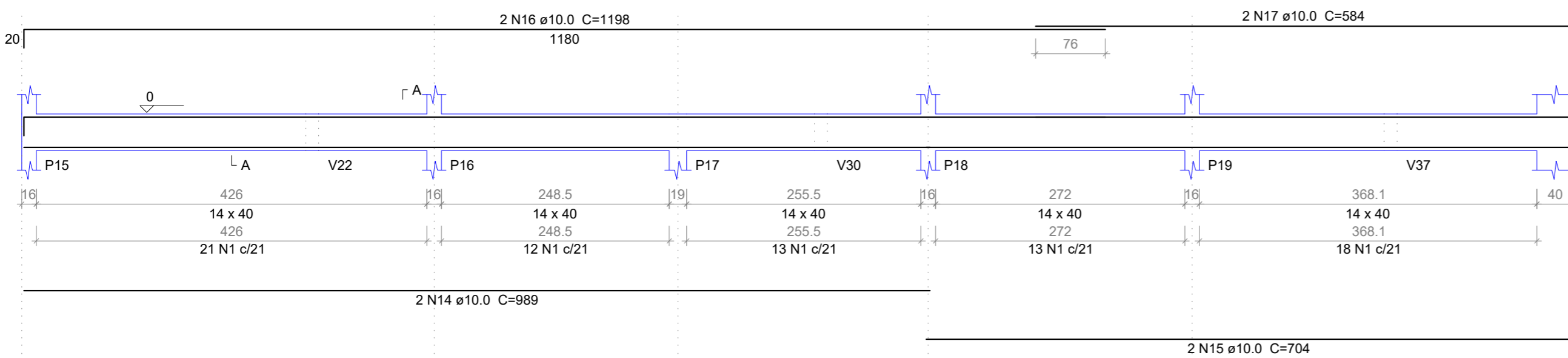


SEÇÃO A-A
ESC 1:25

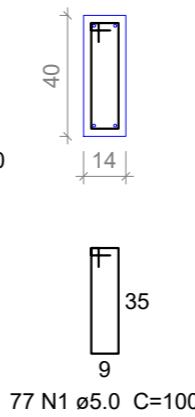


V4

ESC 1:50

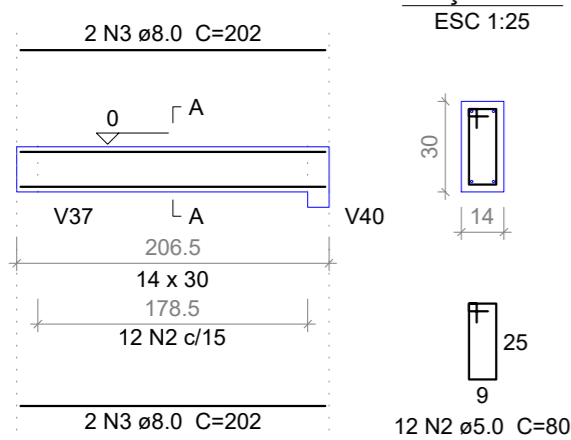


SEÇÃO A-A
ESC 1:25

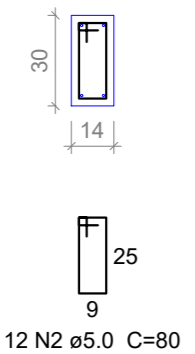


V5

ESC 1:50

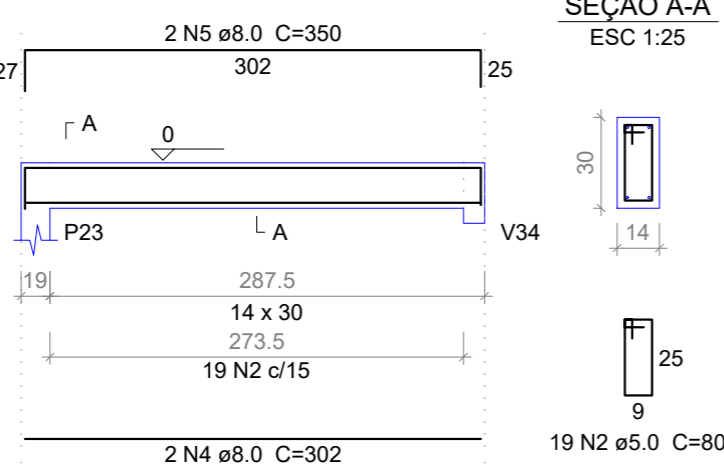


SEÇÃO A-A
ESC 1:25

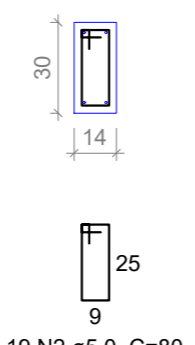


V6

ESC 1:50

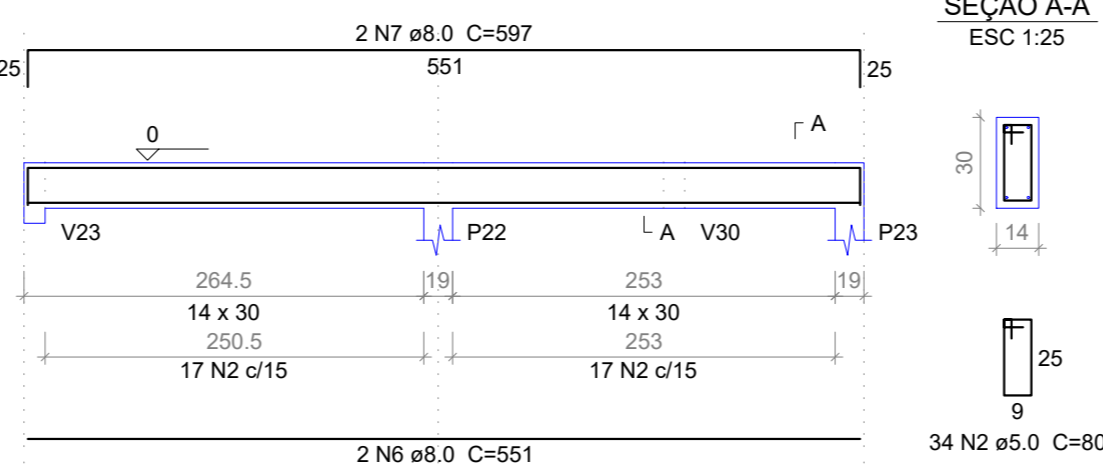


SEÇÃO A-A
ESC 1:25

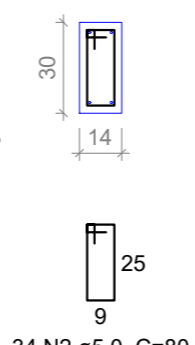


V7

ESC 1:50



SEÇÃO A-A
ESC 1:25



PREFEITURA MUNICIPAL DE PEDRA BRANCA

Projeto: CONSTRUÇÃO DE UMA UBS PORTE 1

Conteúdo: VIGAS BALDRAMES V2 ATÉ V7

Local: PEDRA BRANCA

Data: JUN/2024

Projetista: Ronis

Área Total: -

Área Construída: -

Esc: INDICADA

Responsável: Eng. Civil Heitor Vieira Lima Verde - CREA/CE - 55096

Secretaria de Desenvolvimento Urbano e Meio Ambiente
Rua: José Joaquim de Souza, nº10 - Centro, Pedra Branca - Ce, 63630-000 - CNPJ: 07.726.540/0001-04

06/20