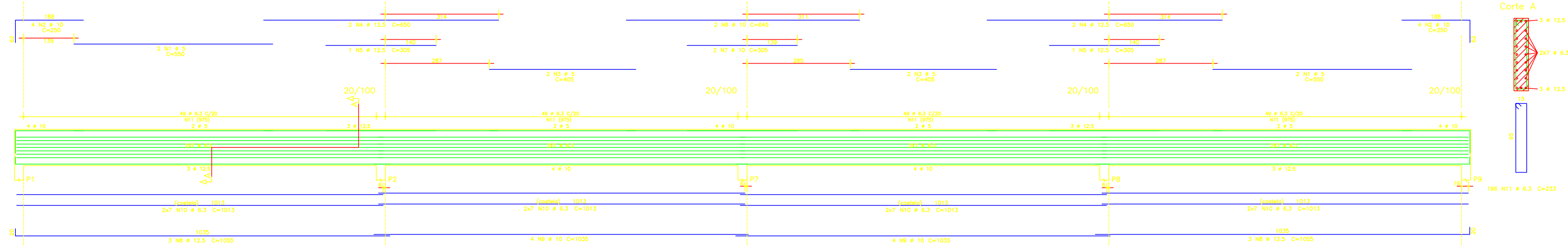
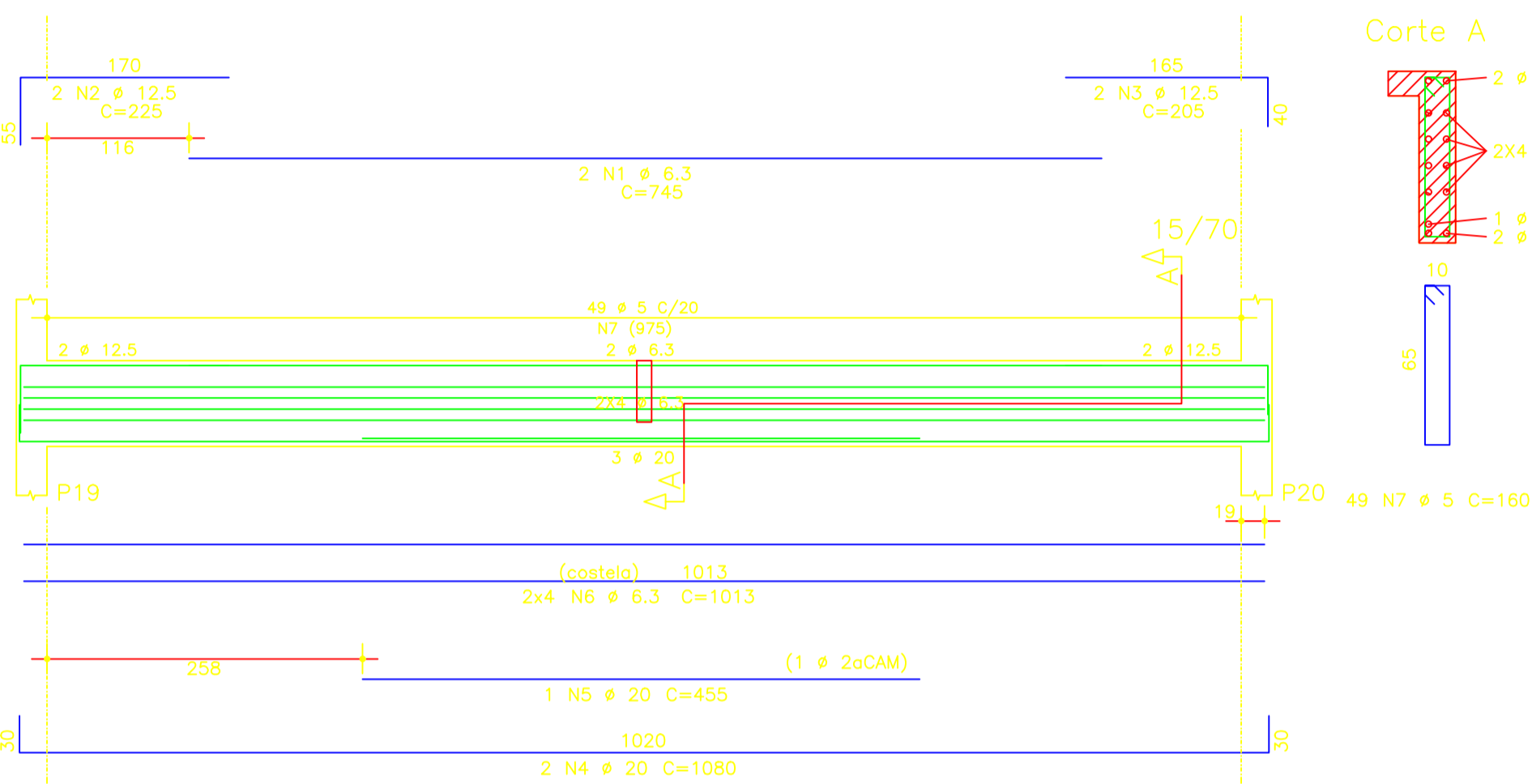


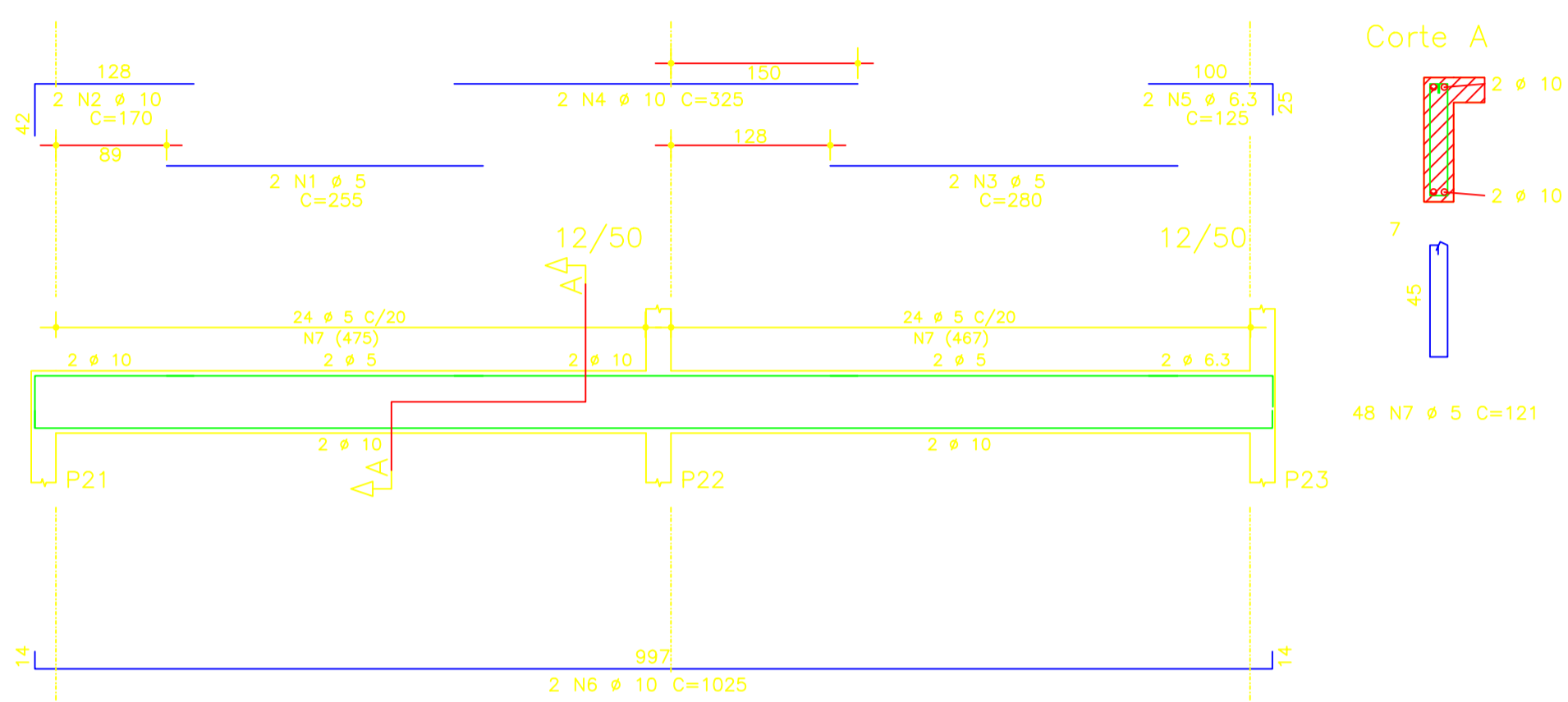
V14



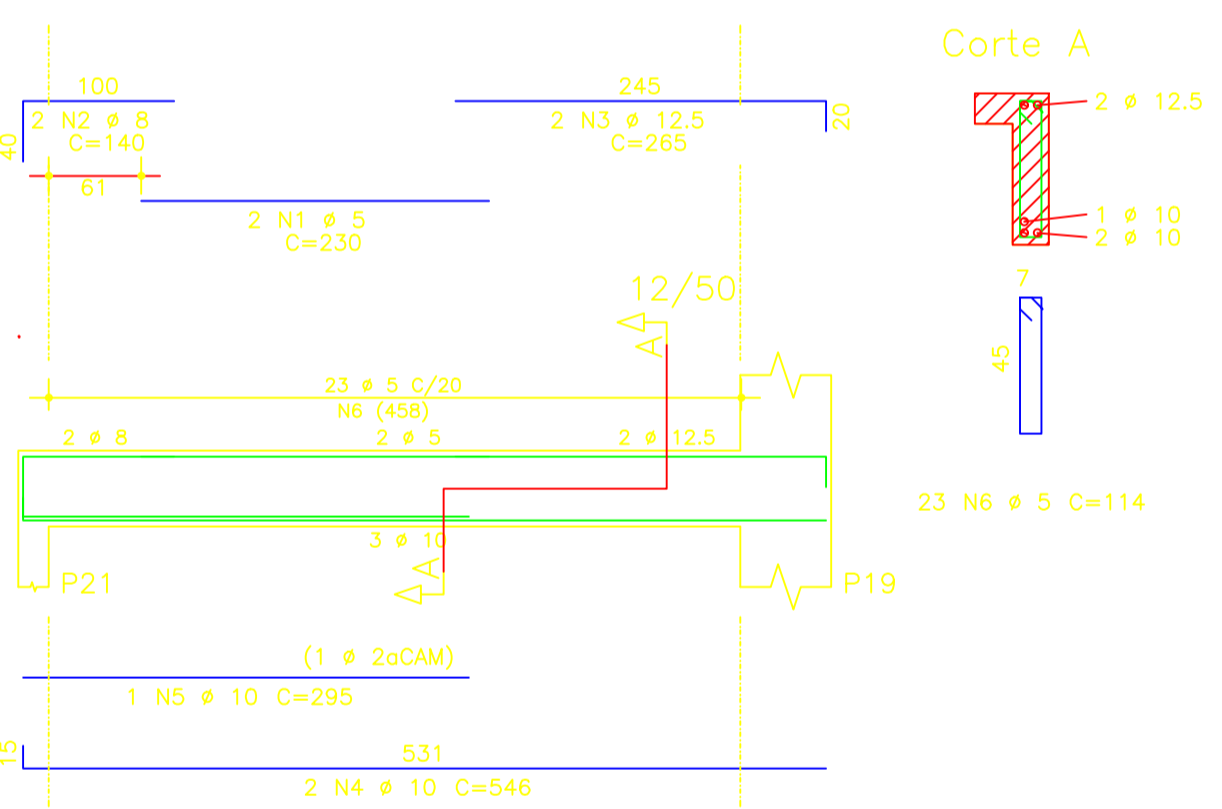
V9



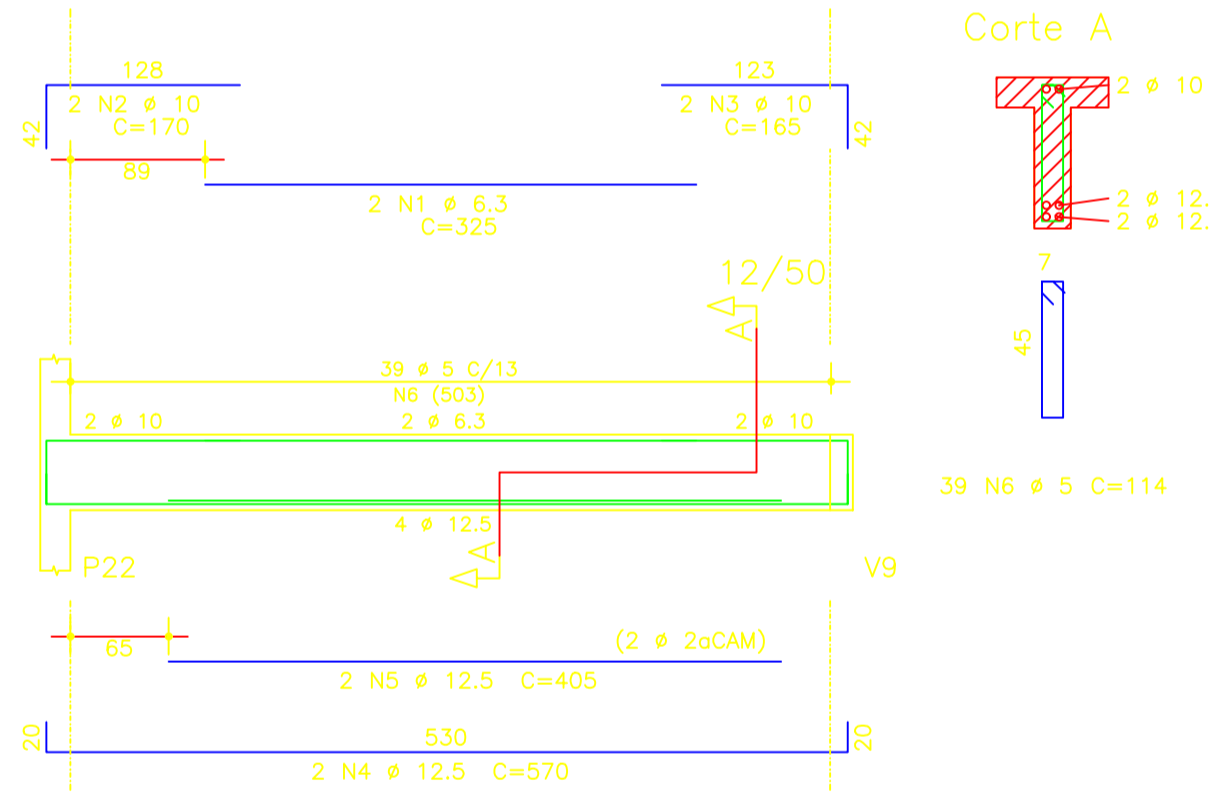
V10



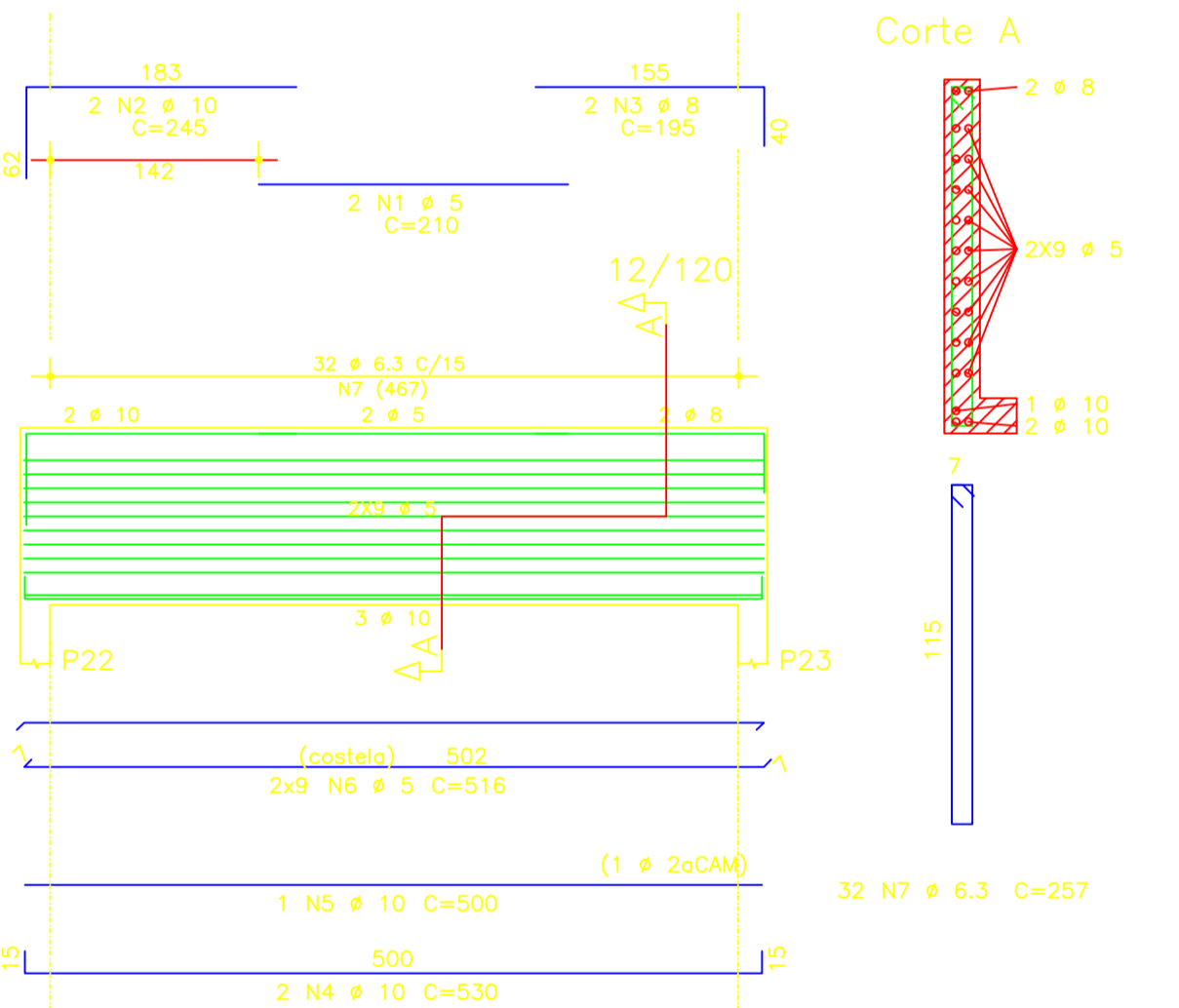
V11-V13



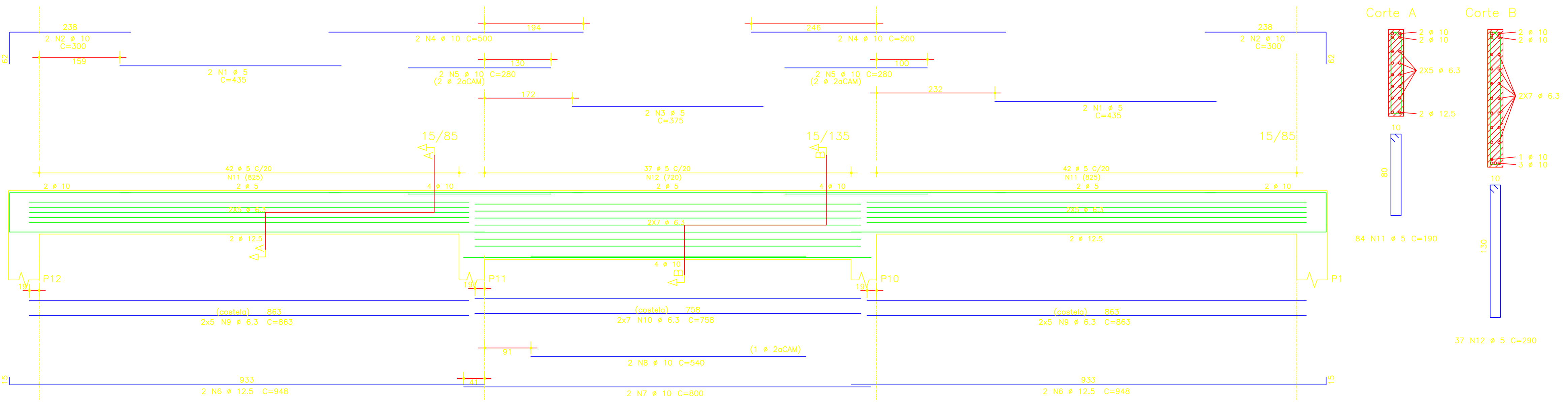
V12



V16



V17



AÇO	POS	BIT (mm)	QUANT	COMPRIMENTO	
				UNIT (cm)	TOTAL (cm)
V9					
50A	1	6.3	2	745	1490
50A	2	12.5	2	225	450
50A	3	12.5	2	205	410
50A	4	20	2	1080	2160
50A	5	20	1	455	455
50A	6	6.3	8	1013	8104
60B	7	5	49	160	7840
V10					
60B	1	5	2	255	510
50A	2	10	2	170	340
60B	3	5	2	280	560
50A	4	10	2	325	650
50A	5	6.3	2	125	250
50A	6	10	2	1025	2050
60B	7	5	48	121	5808
V11-V13 (X2)					
60B	1	5	4	230	920
50A	2	8	4	140	560
50A	3	12.5	4	265	1060
50A	4	10	4	546	2184
50A	5	10	2	295	590
60B	6	5	46	114	5244
V12					
50A	1	6.3	2	325	650
50A	2	10	2	170	340
50A	3	10	2	165	330
50A	4	12.5	2	570	1140
50A	5	12.5	2	405	810
60B	6	5	39	114	4446
V14					
60B	1	5	4	550	2200
50A	2	10	4	250	2000
60B	3	5	4	405	1620
50A	4	12.5	4	650	2600
50A	5	12.5	2	305	610
50A	6	10	2	645	1290
50A	7	10	2	305	610
50A	8	12.5	6	1055	6330
50A	9	10	8	1035	8280
50A	10	6.3	56	1013	56728
50A	11	6.3	196	233	45668
V16					
60B	1	5	2	210	420
50A	2	10	2	245	490
50A	3	8	2	195	390
50A	4	10	2	530	1060
50A	5	10	1	500	500
60B	6	5	18	516	9288
50A	7	6.3	32	257	8224
V17					
60B	1	5	4	435	1740
50A	2	10	4	300	1200
60B	3	5	2	375	750
50A	4	10	4	500	2000
50A	5	10	4	280	1120
50A	6	12.5	4	868	3472
50A	7	10	2	800	1600
50A	8	10	2	540	1080
50A	9	6.3	20	863	17260
50A	10	6.3	14	758	10612
60B	11	5	84	190	15960
60B	12	5	37	290	10730

RESUMO AÇO CA 50-60			
AÇO	BIT (mm)	COMPR (m)	PESO (kg)
60B	5	680	109
50A	6.3	1490	372
50A	8	10	4
50A	10	277	175
50A	12.5	172	172
50A	20	26	65
Peso Total 60B =			109 kg
Peso Total 50A =			788 kg

- NOTAS:
- COBRIMENTO DAS ARMADURAS:
 - LAJES = 2,0cm
 - VIGAS = 2,5cm
 - PILARES E FUNDACOES = 2,5cm
 - CONCRETO: CLASSE C25(Fek=25MPa)
 - A TENSÃO ADMISSÍVEL ADOTADA PARA O TERRENO FOI DE 1,00Kgf/cm², A 1,50m DEVENDO SER VERIFICADA NO LOCAL, ATRAVÉS DE SONDAGENS.

PREFEITURA MUNICIPAL DE PEDRA BRANCA

Projeto: **CONSTRUÇÃO DE GALPÃO INDUSTRIAL 1000m² PEDRA BRANCA - CE**
 Local: **DSITRITO MINEIROLANDIA**

Conteúdo: **ARMADURAS DO CINTAMENTO DO FORRO E BARRILETES**

Desenho: Heitor | Adap. Desenho: Heitor | Área Total: - | Área Construída: 1.000 m² | Data: Janeiro/2024 | Escala: 1/100

Responsável: Heitor Vieira Limaverde | Eng. CIVIL CREA/CE - 55096

06/07