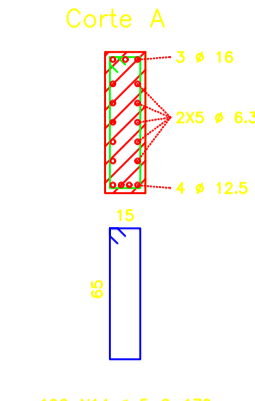
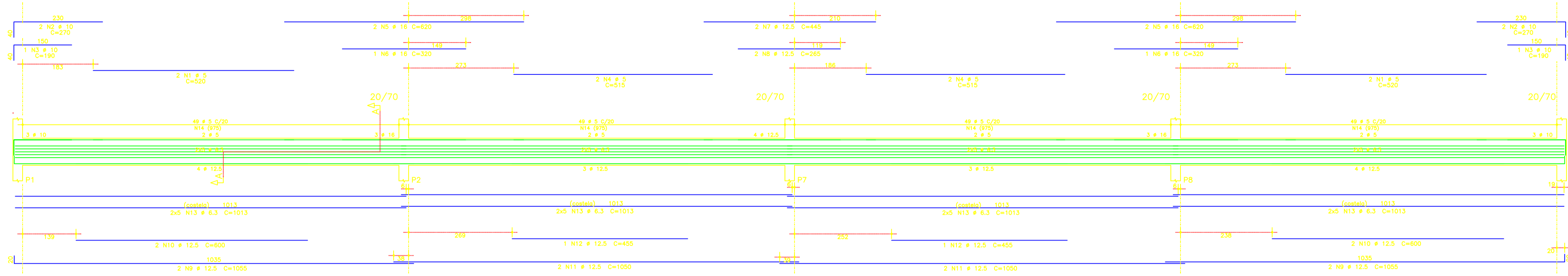
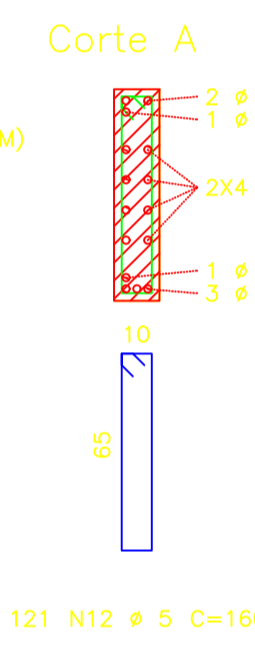
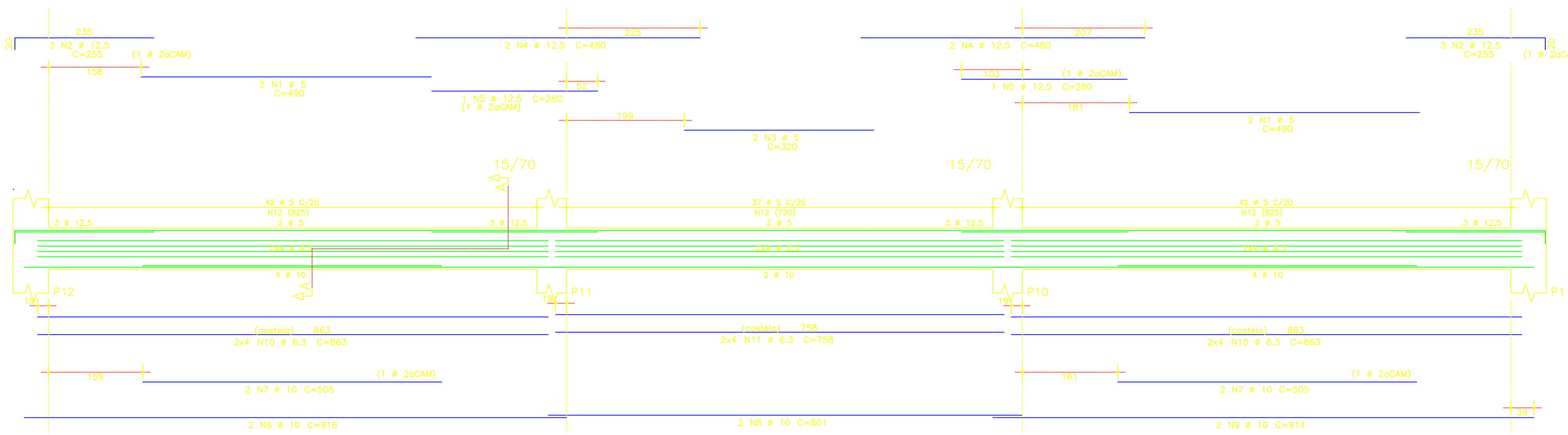


V1-V2



AÇO	POS	BIT (mm)	QUANT	COMPRIMENTO	
				UNIT (cm)	TOTAL (cm)
V1-V2 (X2)					
60B	1	5	8	520	4160
50A	2	10	8	270	2160
50A	3	10	4	190	760
60B	4	5	8	515	4120
50A	5	16	8	620	4960
50A	6	16	4	320	1280
50A	7	12,5	4	445	1780
50A	8	12,5	4	265	1060
50A	9	12,5	8	1055	8440
50A	10	12,5	8	600	4800
50A	11	12,5	8	1050	8400
50A	12	12,5	4	455	1820
50A	13	6,3	80	1013	81040
60B	14	5	392	170	66840
V3					
50A	1	10	2	1061	2122
50A	2	10	2	1035	2070
60B	3	5	48	94	4512
V4-V8 (X2)					
60B	1	5	8	480	3920
50A	2	12,5	12	255	3060
60B	3	5	4	320	1280
50A	4	12,5	8	480	3840
50A	5	12,5	4	280	1120
50A	6	10	4	315	3564
50A	7	10	8	505	4040
50A	8	10	4	801	3204
50A	9	10	4	914	3656
50A	10	6,3	32	863	27616
50A	11	6,3	16	758	12128
60B	12	5	242	160	38720
V5-V7 (X2)					
50A	1	8	4	390	1560
50A	2	10	4	215	860
50A	3	10	4	551	2204
60B	4	5	46	94	4324
V6					
60B	1	5	2	345	690
50A	2	10	2	161	322
50A	3	8	2	140	280
50A	4	10	2	560	1120
60B	5	5	25	94	2350

V4-V8

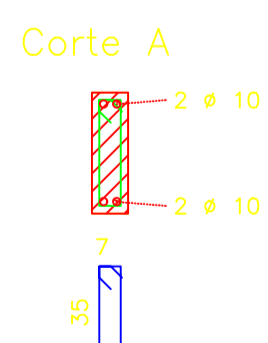
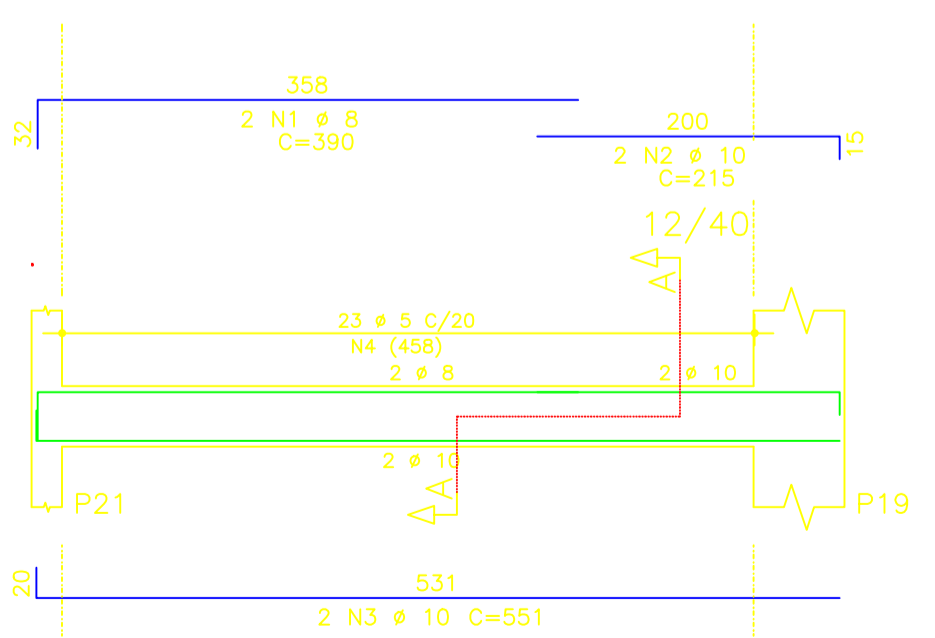


RESUMO AÇO CA 50-60				
AÇO	BIT (mm)	COMPR (m)	PESO (kg)	
60B	5	1307	209	
50A	6,3	1208	302	
50A	8	18	7	
50A	10	262	165	
50A	12,5	343	343	
50A	16	62	100	
Peso Total		60B =	209 kg	
Peso Total		50A =	917 kg	

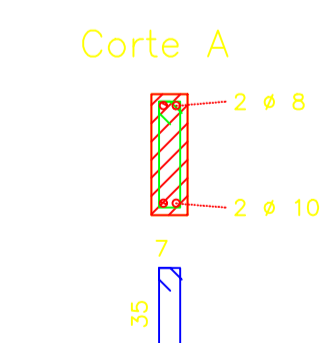
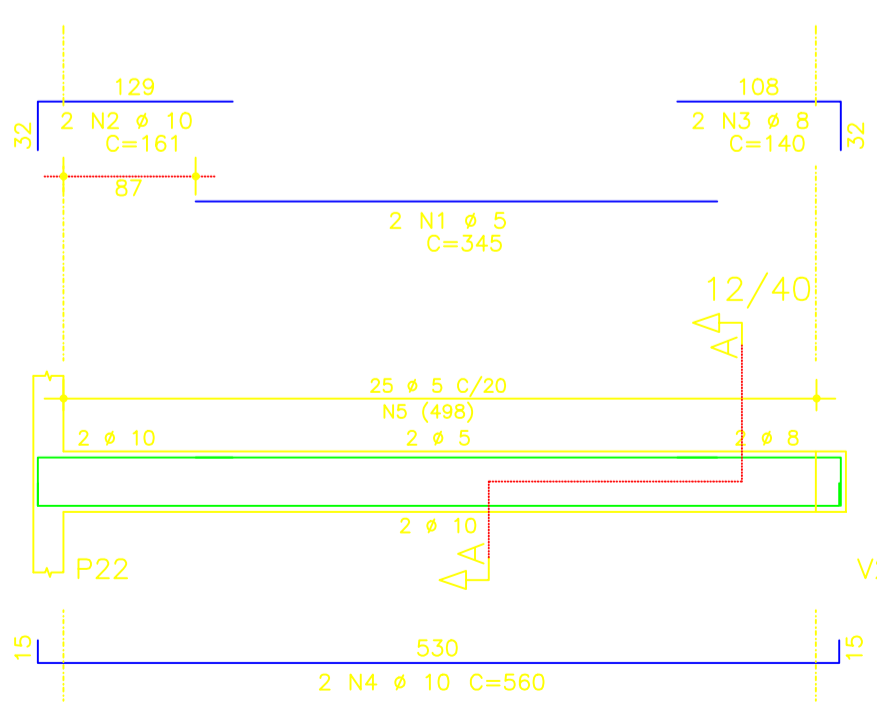
NOTAS:

- COBRIMENTO DAS ARMADURAS:
 -LAJES = 2,0cm
 -VIGAS = 2,5cm
 -PILARES E FUNDACOES = 2,5cm
- CONCRETO: CLASSE C25(Fck=25MPa)
- A TENSÃO ADMISSÍVEL ADOTADA PARA O TERRENO FOI DE 1,00Kgf/cm², A 1,50m DEVENDO SER VERIFICADA NO LOCAL, ATRAVÉS DE SONDAGENS.

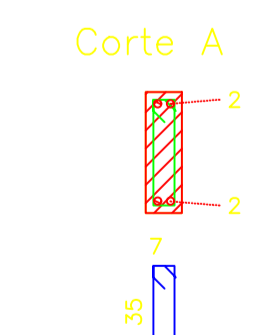
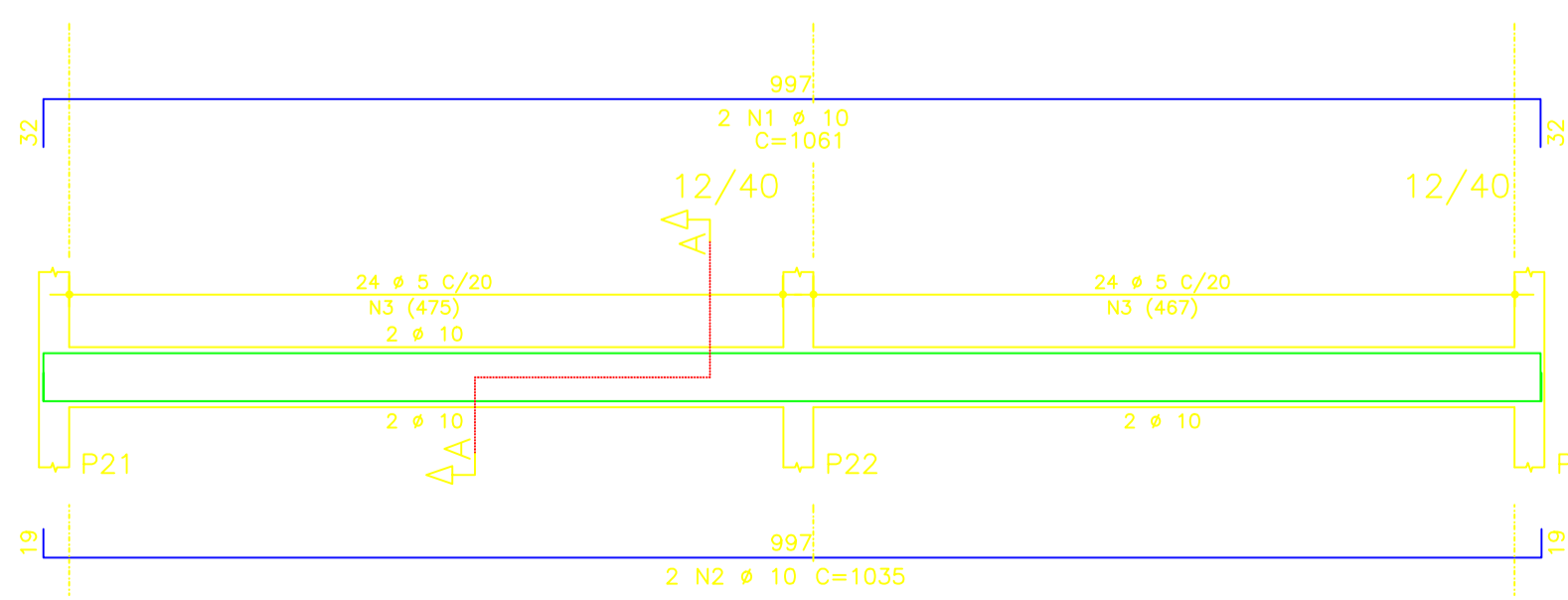
V5-V7



V6



V3



PREFEITURA MUNICIPAL DE PEDRA BRANCA

Projeto: CONSTRUÇÃO DE GALPÃO INDUSTRIAL 1000m²
 PEDRA BRANCA - CE
 Local: DISTRITO MINEIROLÂNDIA

Conteúdo: ARMADURAS DAS VIGAS DO PISO DO TÉRREO(CINTAS)

Responsible: Heitor Vieira Limaverde
 Eng. Civil CREA/CE - 55036

Desenho: Heitor
 Adap. Desenho: Heitor

Área Total: -
 Área Construída: 1.000 m²

Data: Janeiro/2024
 Escala: 1/100

04/07