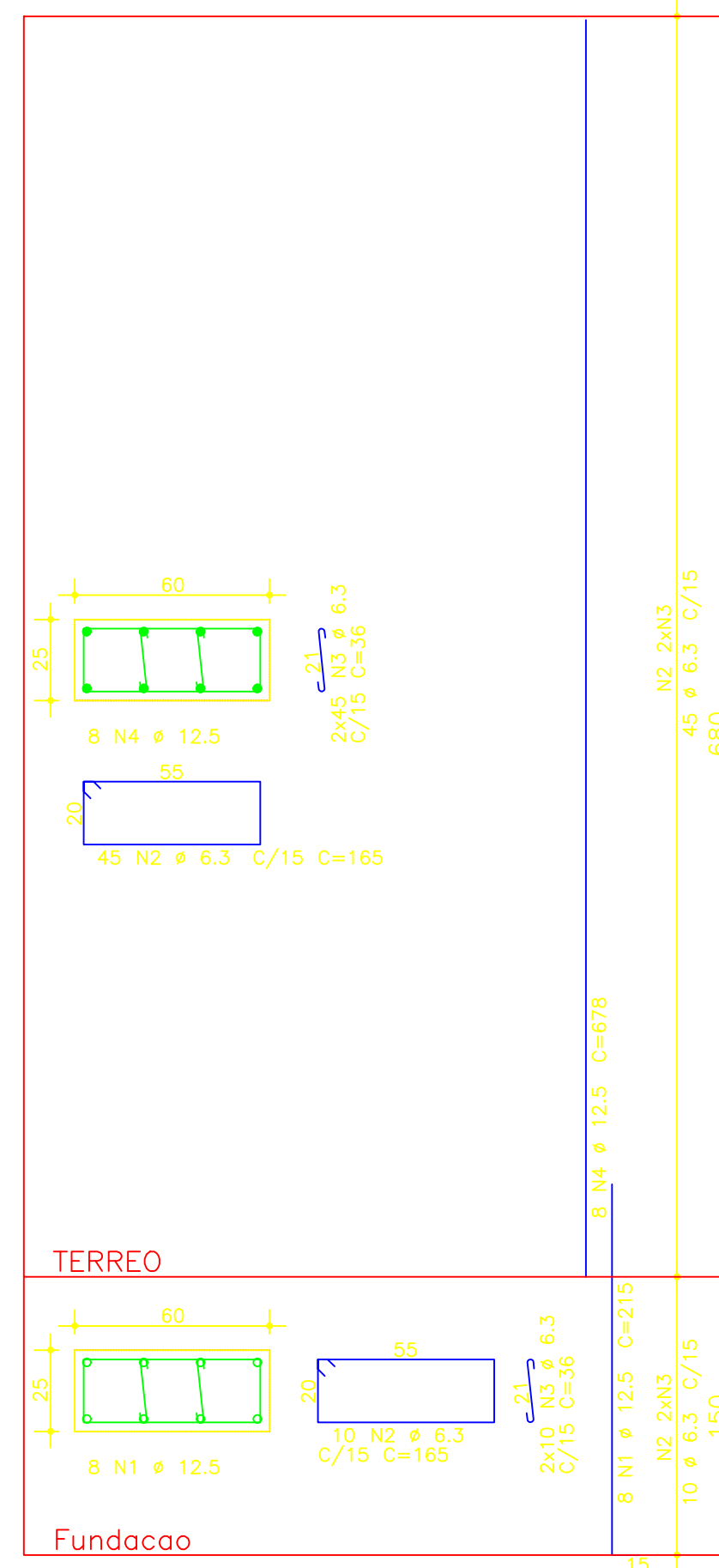
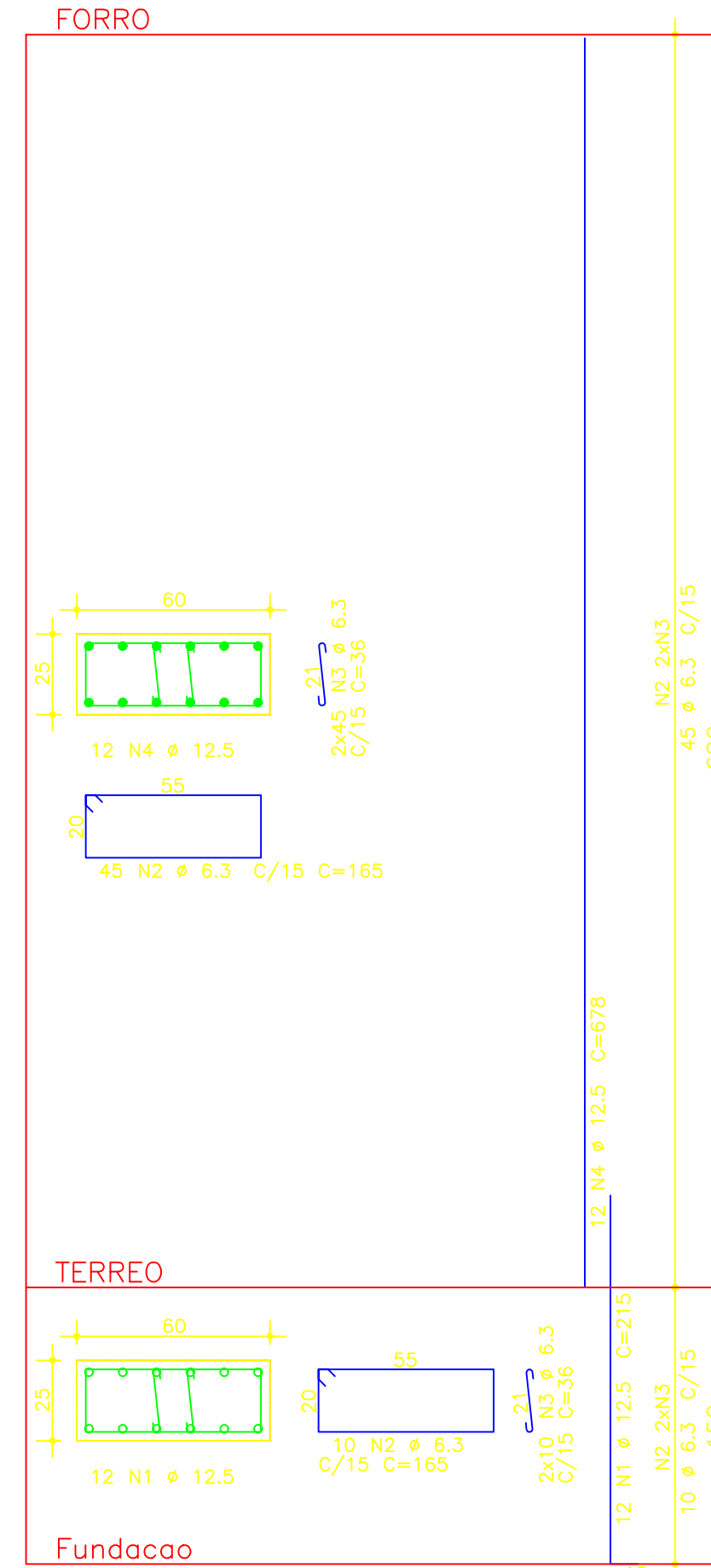


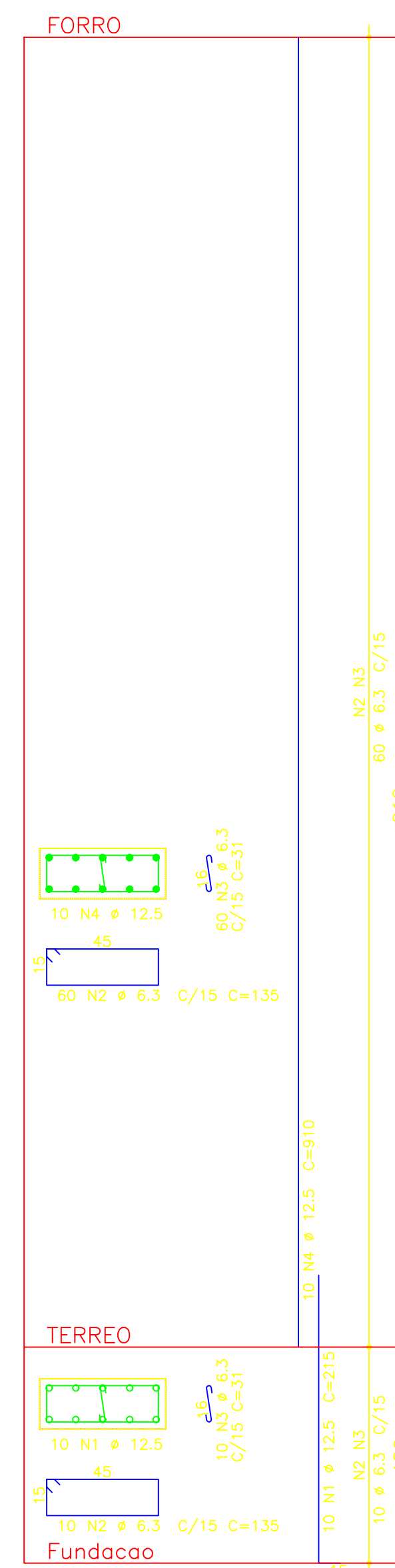
P1-P9-P14-P22



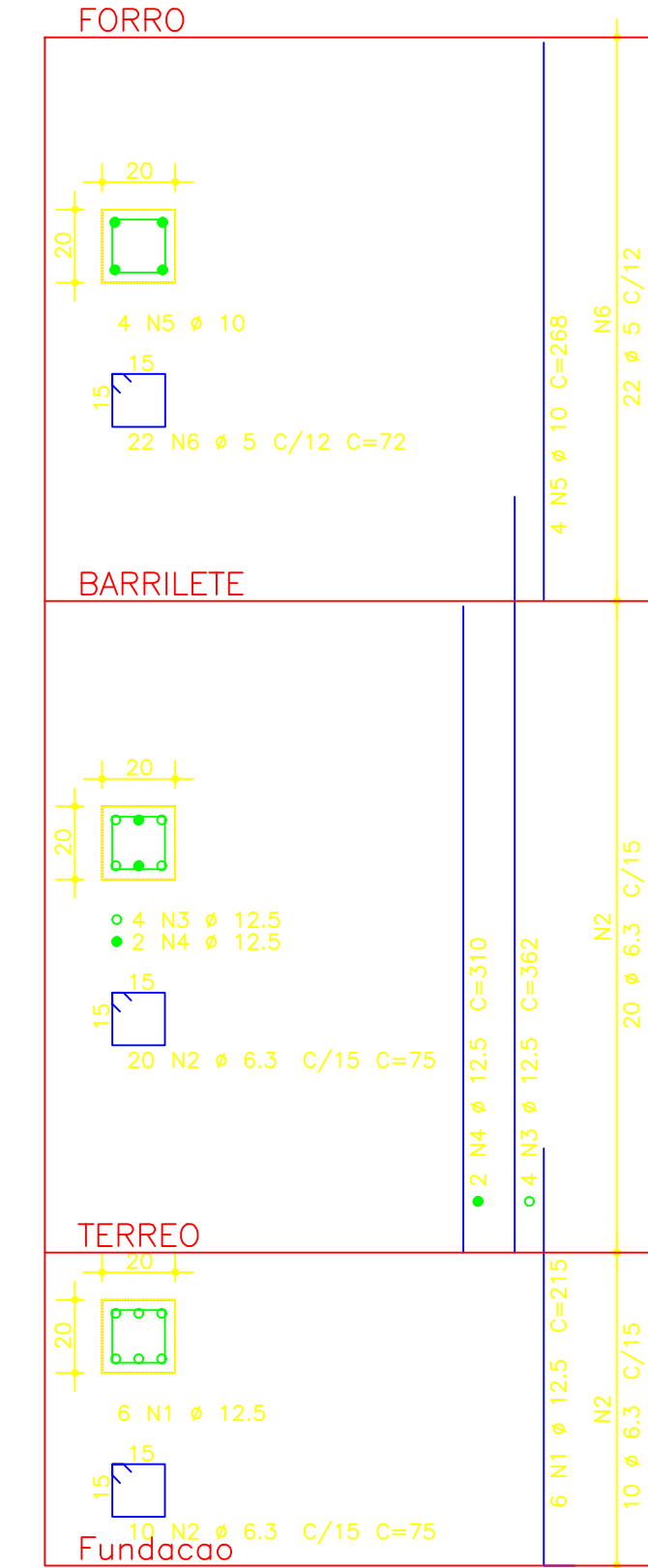
P2-P7-P8-P15-P20-P21



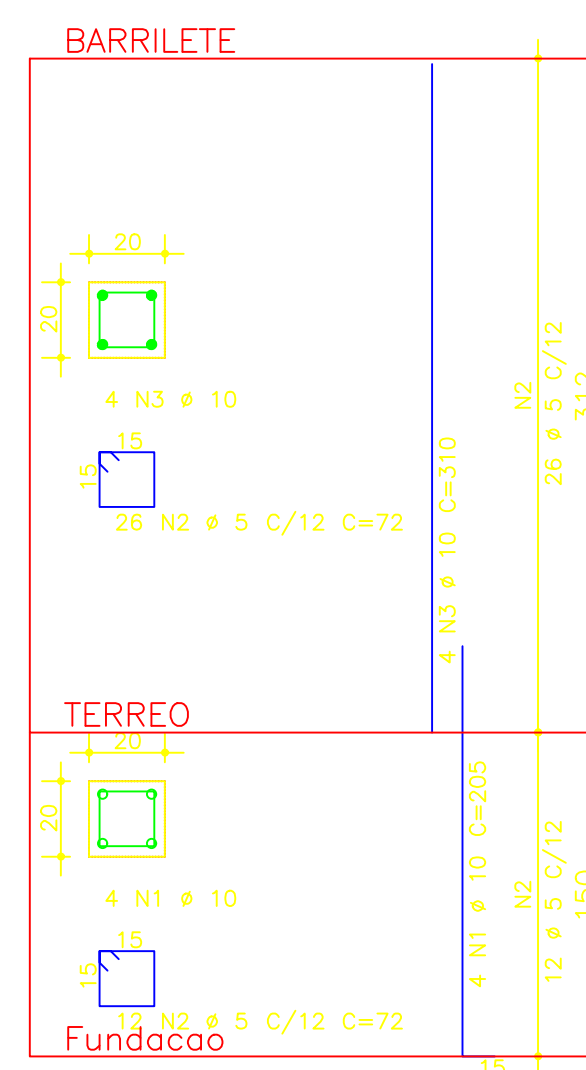
P10-P11-P12-P13



P24-P25



P23



AÇO	POS	BIT (mm)	QUANT	COMPRIMENTO	
				UNIT (cm)	TOTAL (cm)
P1-P9-P14-P22 (X4)					
50A	1	12.5	32	215	6880
50A	2	6.3	220	165	36300
50A	3	6.3	440	36	15840
50A	4	12.5	32	678	21696
P2-P7-P8-P15-P20-P21 (X6)					
50A	1	12.5	72	215	15480
50A	2	6.3	330	165	54450
50A	3	6.3	660	36	23760
50A	4	12.5	72	678	48816
P10-P11-P12-P13 (X4)					
50A	1	12.5	40	215	8600
50A	2	6.3	280	135	37800
50A	3	6.3	280	31	8680
50A	4	12.5	40	910	36400
P23					
50A	1	10	4	205	820
60B	2	5	38	72	2736
50A	3	10	4	310	1240
P24-P25 (X2)					
50A	1	12.5	12	215	2580
50A	2	6.3	60	75	4500
50A	3	12.5	8	362	2896
50A	4	12.5	4	310	1240
50A	5	10	8	268	2144
60B	6	5	44	72	3168

RESUMO AÇO CA 50-60			
AÇO	BIT (mm)	COMPR (m)	PESO (kg)
60B	5	59	9
50A	6.3	1813	453
50A	10	42	26
50A	12.5	1446	1446
Peso Total		60B =	9 kg
Peso Total		50A =	1926 kg

NOTAS:

- COBRIMENTO DAS ARMADURAS:
 -LAJES = 2.0cm
 -VIGAS = 2,5cm
 -PILARES E FUNDACOES = 2,5cm
- CONCRETO: CLASSE C25(Fck=25MPa)
- A TENSÃO ADMISSÍVEL ADOTADA PARA O TERRENO FOI DE 1,00Kgf/cm². A 1,50m DEVENDO SER VERIFICADA NO LOCAL, ATRAVÉS DE SONDAJENS.

PREFETURA MUNICIPAL DE PEDRA BRANCA

Projeto:
 CONSTRUÇÃO DE GALPÃO INDUSTRIAL 1000m²
 PEDRA BRANCA - CE
 Local:
 DISTRITO MINEIROLANDIA

Conteúdo:
 FORMAS E ARMADURAS DOS PILARES

Desenho: Heitor | Adap. Desenho: Heitor | Área Total: - | Área Construída: 1.000 m² | Data: Janeiro/2024 | Escala: 1/100

Responsável:
 Heitor Vieira Lima Verde
 Eng. Civil CREA/CE - 55036