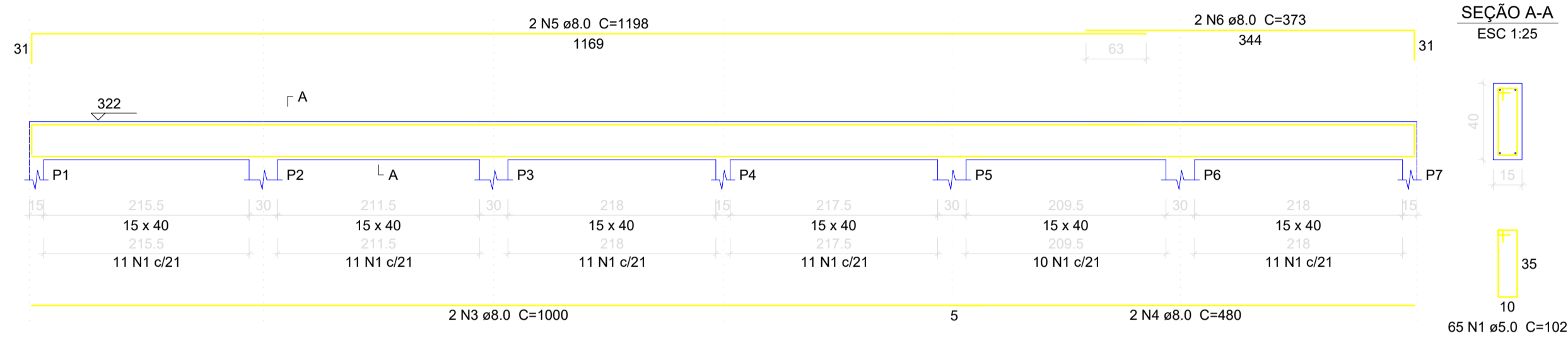
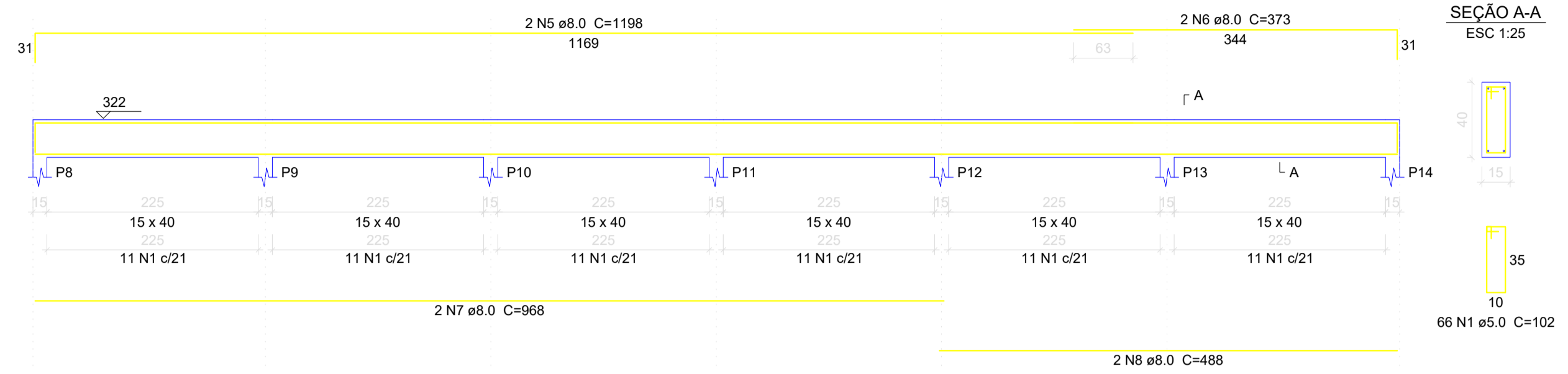


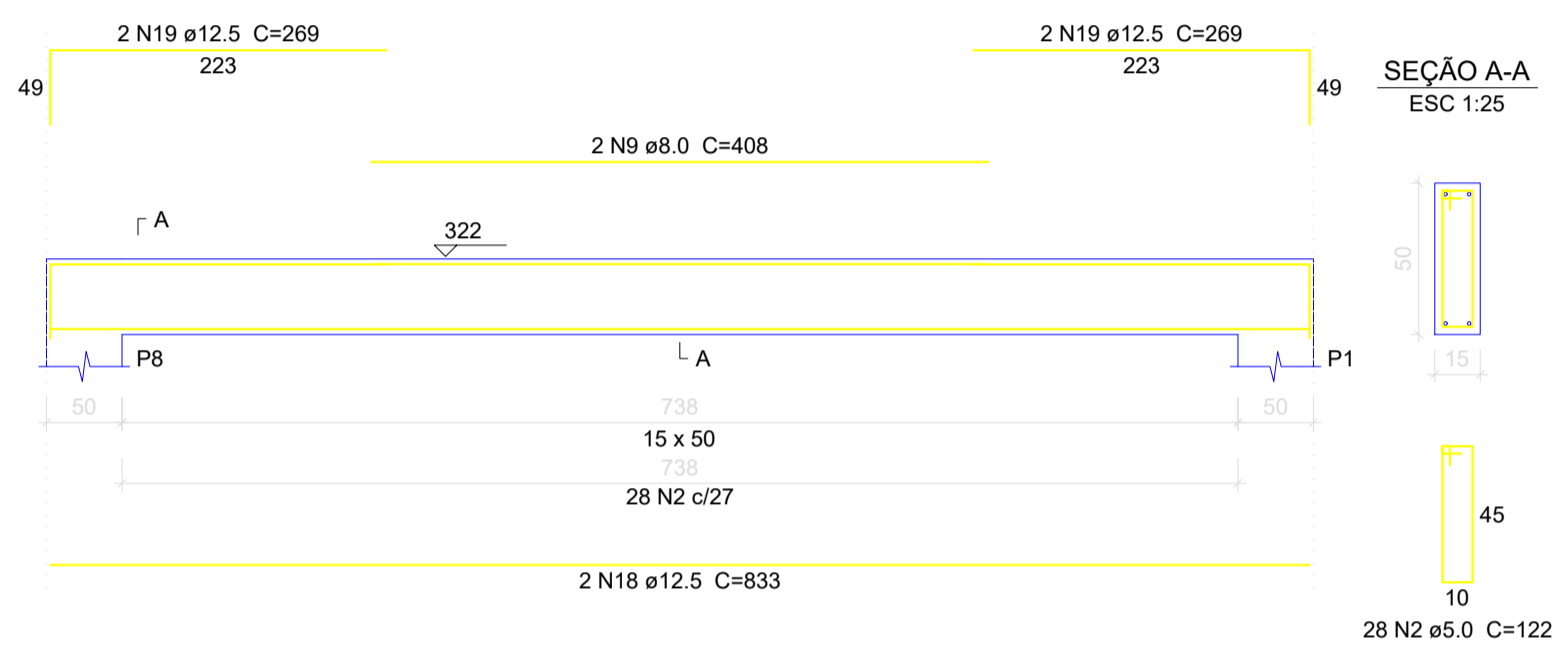
V1  
ESC 1:50



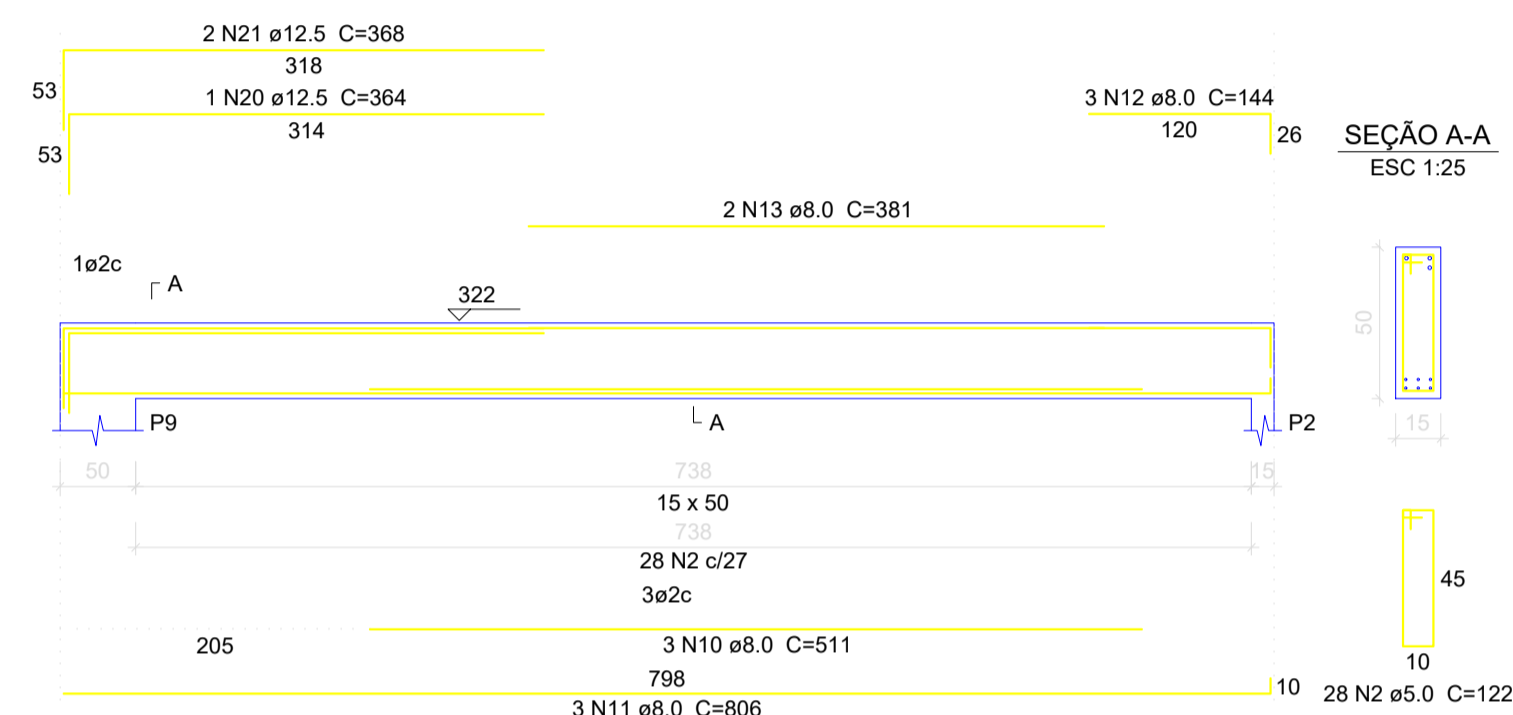
V2  
ESC 1:50



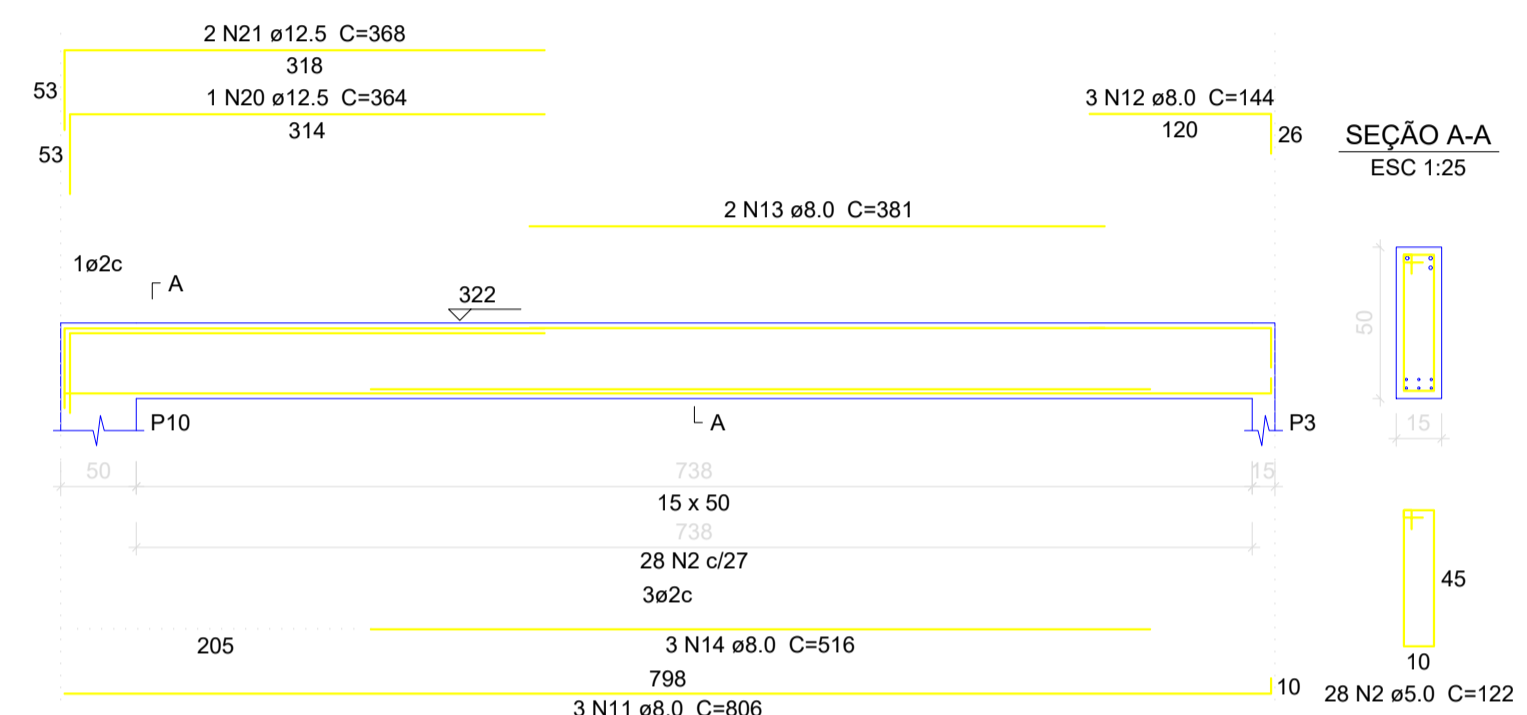
V3  
ESC 1:50



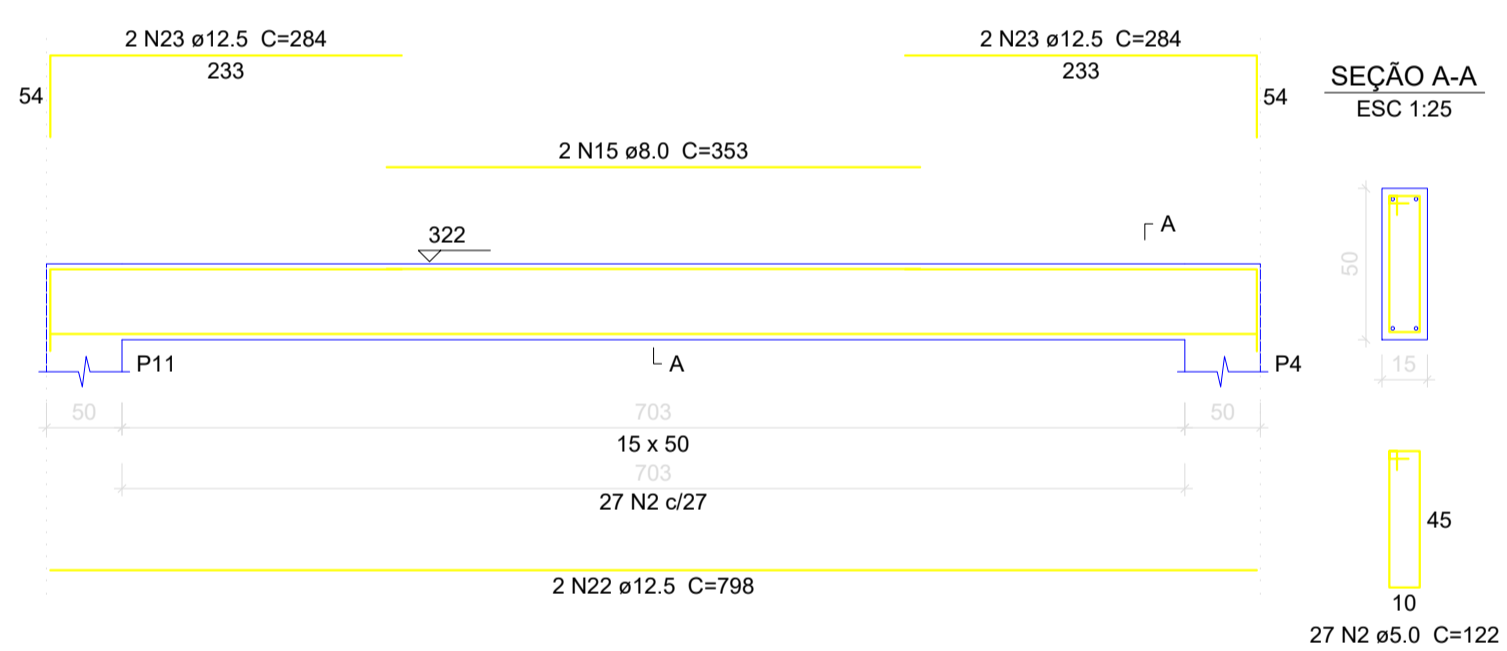
V4  
ESC 1:50



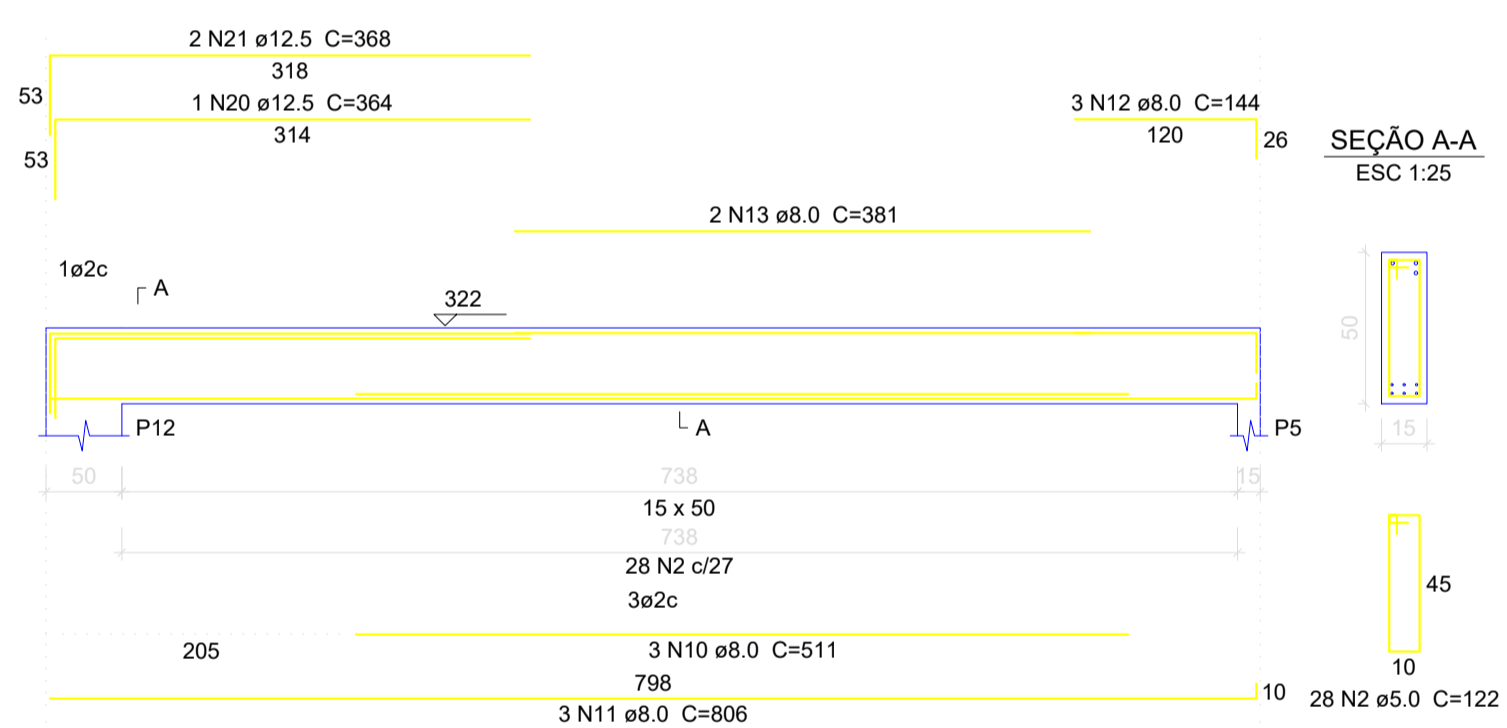
V5  
ESC 1:50



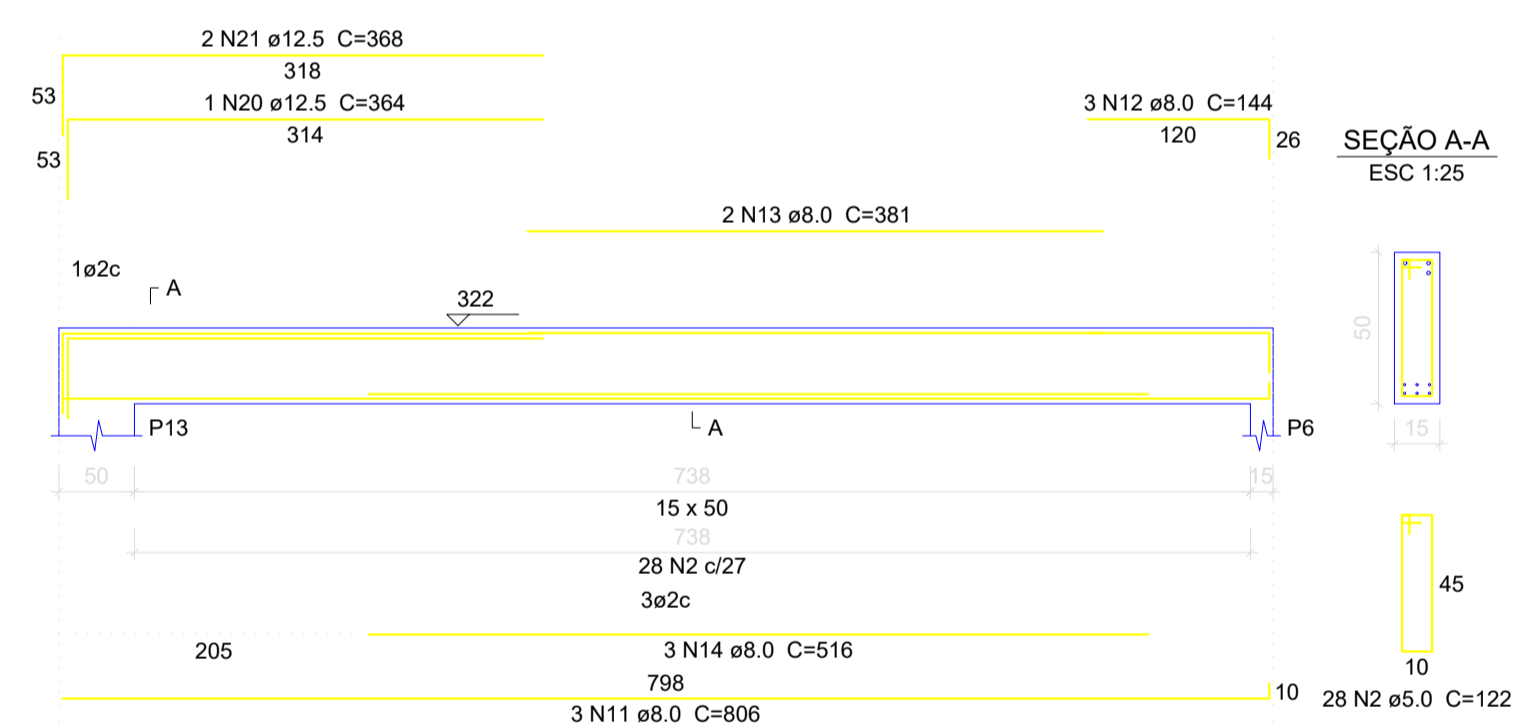
V6  
ESC 1:50



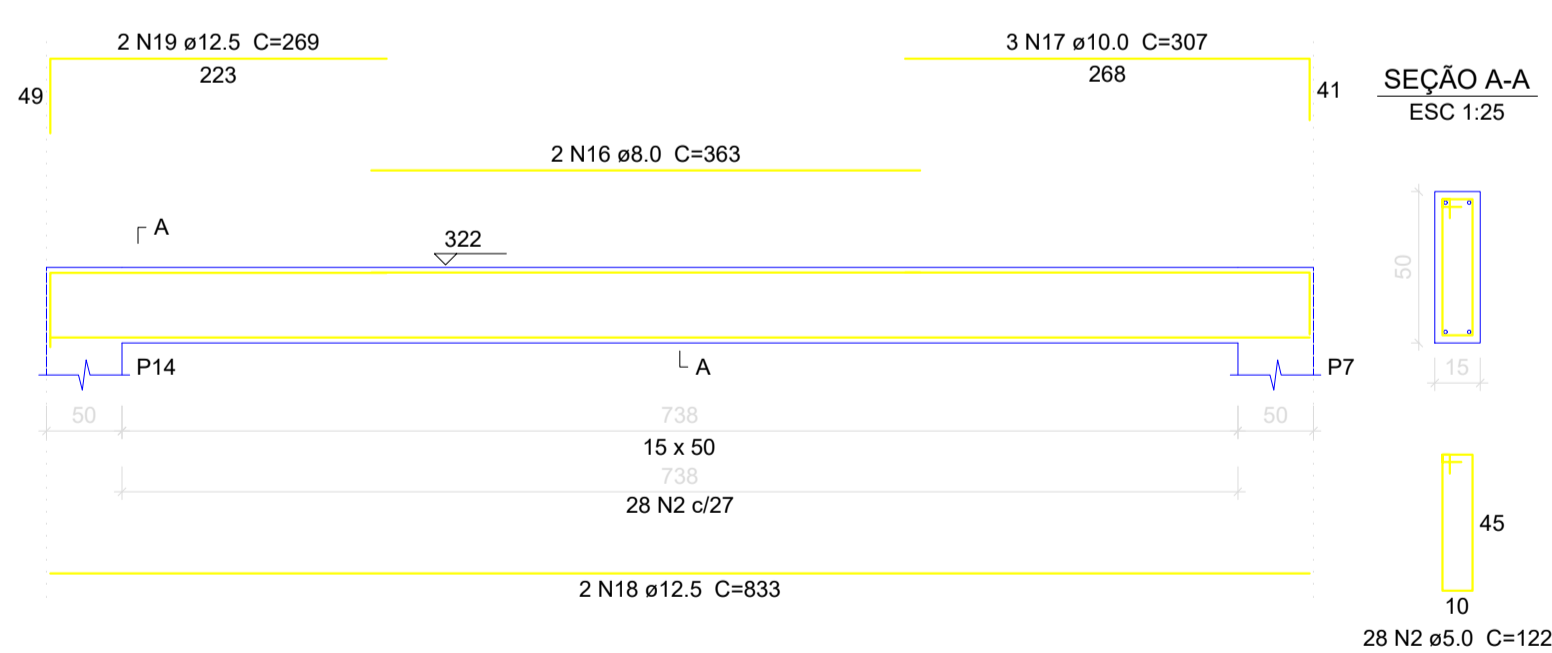
V7  
ESC 1:50



V8  
ESC 1:50



V9  
ESC 1:50



Relação do aço

ÁÇO	N	DIAM	Q	UNIT (cm)	C.TOTAL (cm)
CA60	1	5.0	131	102	13362
CA50	2	5.0	195	122	23790
	3	8.0	2	1000	2000
	4	8.0	2	480	960
	5	8.0	4	1198	4792
	6	8.0	4	373	1492
	7	8.0	2	968	1936
	8	8.0	2	488	976
	9	8.0	2	408	816
	10	8.0	6	511	3066
	11	8.0	12	806	9672
	12	8.0	12	144	1728
	13	8.0	8	381	3048
	14	8.0	6	516	3096
	15	8.0	2	353	706
	16	8.0	2	363	726
	17	10.0	3	307	921
	18	12.5	4	833	3332
	19	12.5	6	269	1614
	20	12.5	4	364	1456
	21	12.5	8	368	2944
	22	12.5	2	798	1596
	23	12.5	4	284	1136

Resumo do aço

ÁÇO	DIAM	C.TOTAL (m)	PESO + 10 % (kg)
CA50	8.0	350.2	152
	10.0	9.3	6.2
	12.5	120.8	128
CA60	5.0	371.6	63
<b>PESO TOTAL</b>			
CA50	286.2		
CA60	65		

Vol. de concreto total (C-20) = 6.01 m³  
Área de forma total = 93.09 m²



PREFEITURA MUNICIPAL DE PEDRA BRANCA

Projeto estrutural:  
REFORMA E AMPLIAÇÃO  
ESCOLA GABRIEL DE FRANÇA MELO

Conteúdo:  
Projeto Estrutural  
VIGAS

Local: MINEIROLANDIA-PEDRA BRANCA-CE Data: 09.2023

Projeta: Ronis Área Total: - Área Construída: - Esc: indicada

Responsável: Arq. Antônio Custódio dos Santos Neto- CAU-CE nº A73644

Secretaria de Desenvolvimento Urbano e Meio Ambiente  
Rua: José Joaquim de Souza, nº10 - Centro, Pedra Branca - Ce, 63630-000 - CNPJ: 07.726.540/0001-04