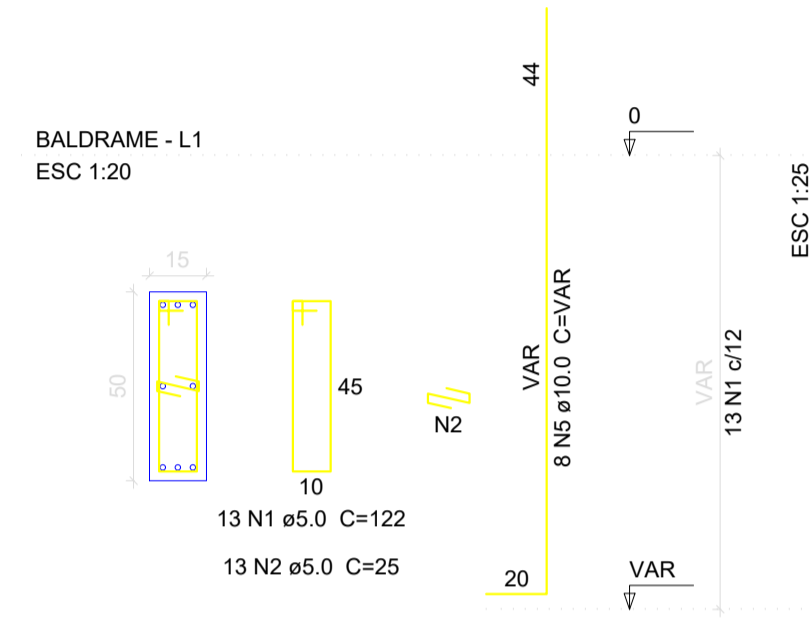
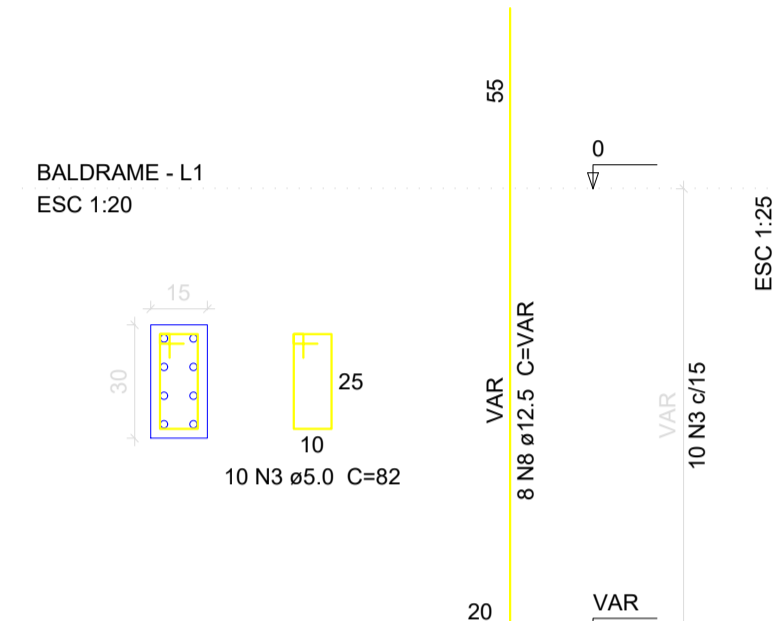


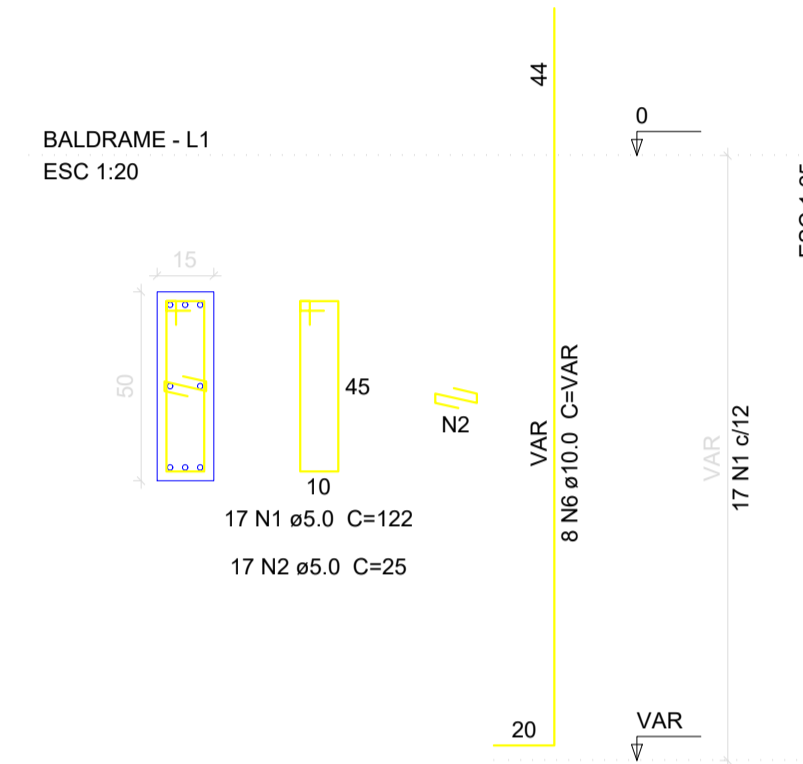
P1=P4=P7=P11=P14



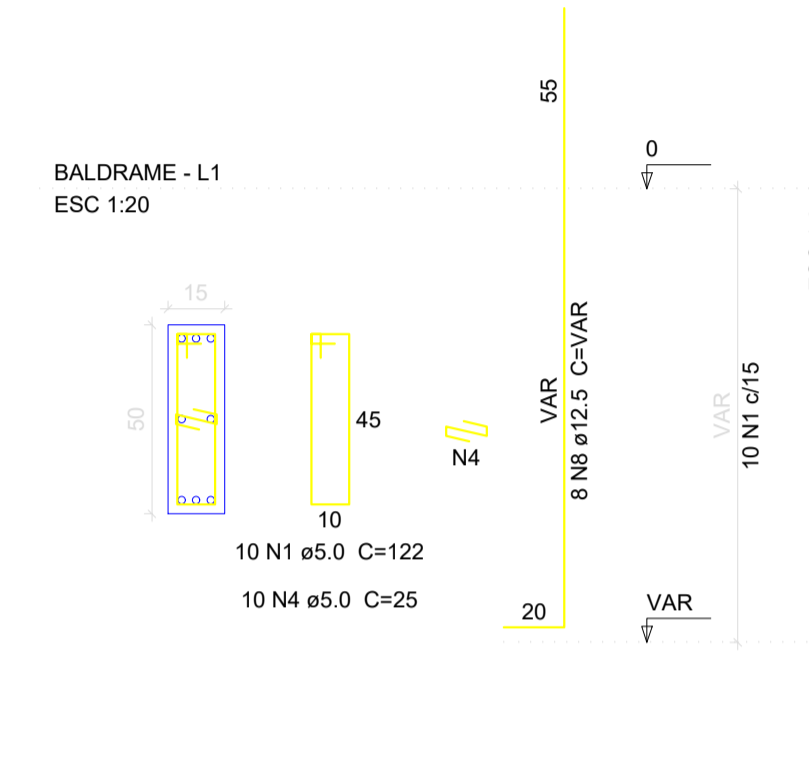
P2=P3=P5=P6



P8



P9=P10=P12=P13



Relação do aço

Baldrame:	5xP1	4xP2
Térreo:	P8	4xP9
	6xP1	4xP2
	4xP9	

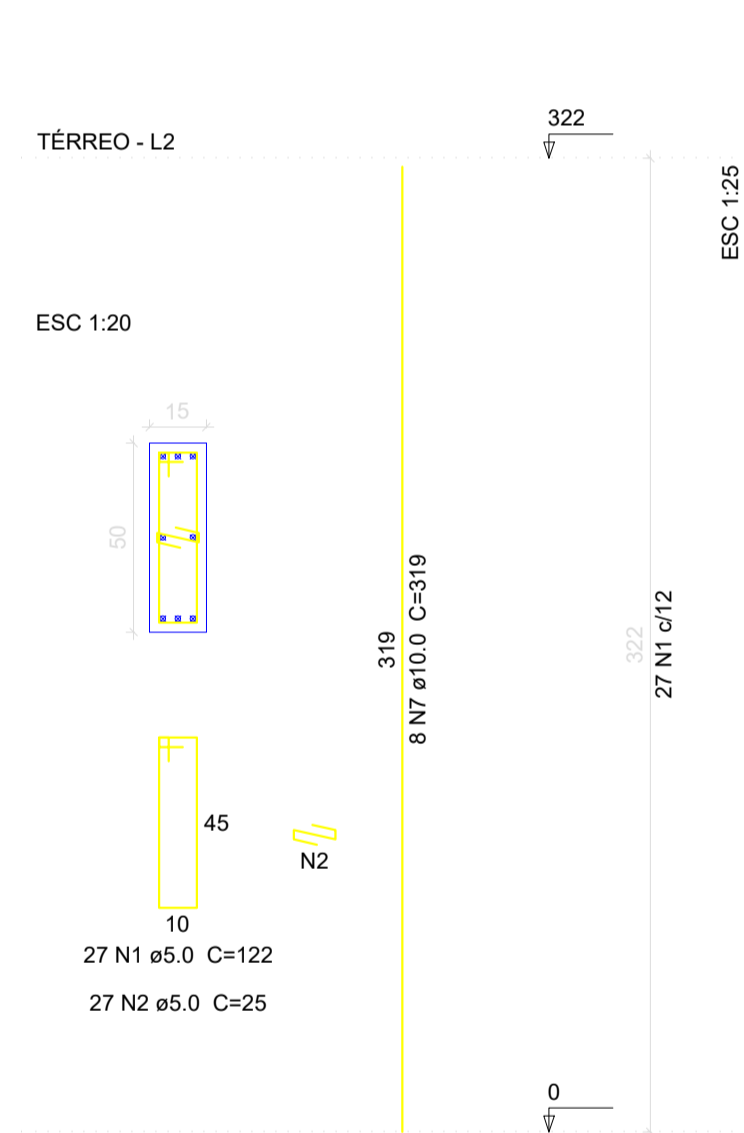
AÇO	N	DIAM	Q	UNIT (cm)	C.TOTAL (cm)
CA60	1	5.0	372	122	45384
	2	5.0	244	25	6100
	3	5.0	128	82	10486
	4	5.0	128	25	3200
CA50	5	10.0	40	VAR	VAR
	6	10.0	8	VAR	VAR
	7	10.0	48	319	15312
	8	12.5	64	VAR	VAR
	9	12.5	64	319	20416

Resumo do aço

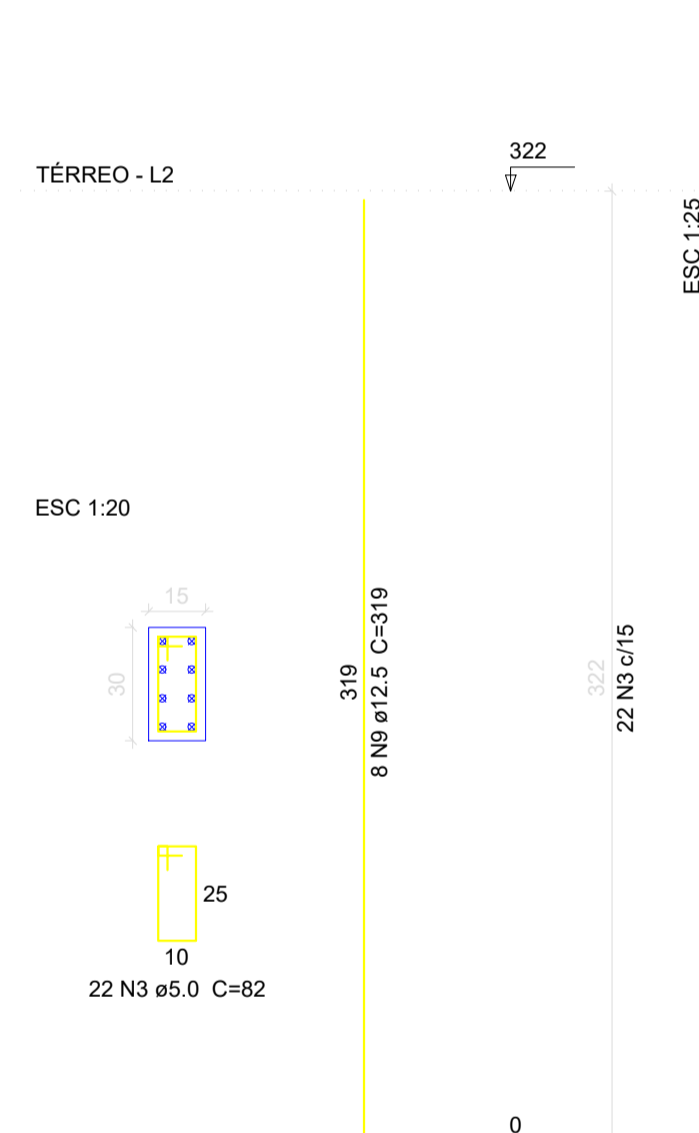
AÇO	DIAM	C.TOTAL (m)	PESO + 10% (kg)
CA50	10.0	258.9	175.6
	12.5	346.3	366.9
CA60	5.0	651.8	110.5
PESO TOTAL			
CA50		542.5	
CA60		110.5	

Vol. de concreto total (C-20) = 4.43 m³
 Área de forma total = 79 m²

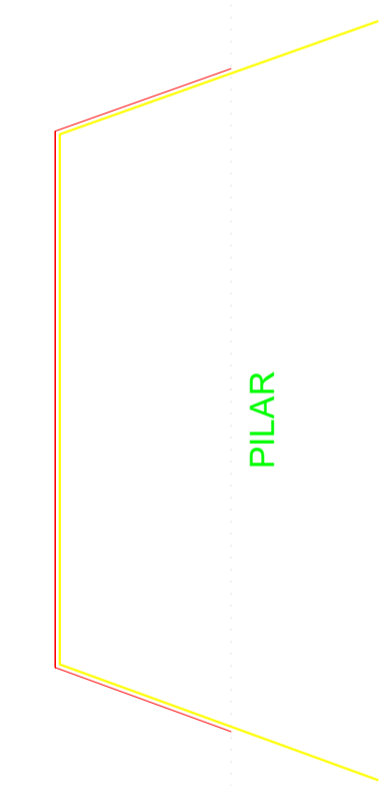
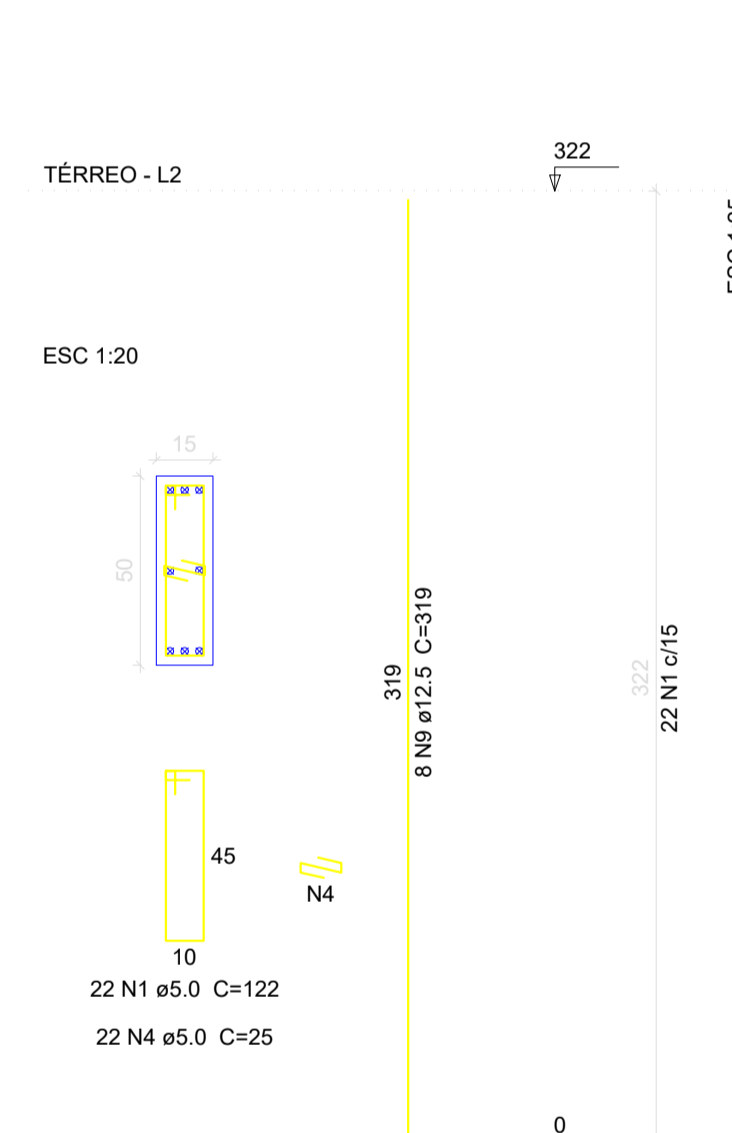
P1=P4=P7=P8=P11=P14



P2=P3=P5=P6



P9=P10=P12=P13



		PREFEITURA MUNICIPAL DE PEDRA BRANCA		
		Projeto estrutural: REFORMA E AMPLIAÇÃO ESCOLA GABRIEL DE FRANÇA MELO		
Local:	MINEIROLANDIA-PEDRA BRANCA-CE	Data:	09.2023	
Projetista:	Ronis	Área Construída:	-	
Responsável:	Arq. Antônio Custódio dos Santos Neto- CAU-CE nº A73644		Esc:	indicada
Secretária de Desenvolvimento Urbano e Meio Ambiente Rua: José Joaquim de Souza, nº10 - Centro, Pedra Branca - Ce, 63630-000 - CNPJ: 07.726.540/0001-04			06/06	